

# Series SQ

## One-Touch Fittings

### One-Touch Fittings



#### Features

- ONE ACTION INSERTS THE TUBE TO RELEASE AND CONNECT EASILY
- THE SQH TYPE HAS INTERIOR AND EXTERIOR HEXAGONAL SHAPES FOR EFFICIENT PIPING IN LIMITED SPACES
- THE MAIN BODY OF THE SQL AND SQT TYPES IS A ROTATING STRUCTURE FOR EFFICIENT PIPING
- THE SCREW SECTION HAS O-RINGS, OR IS SEALANT COATED

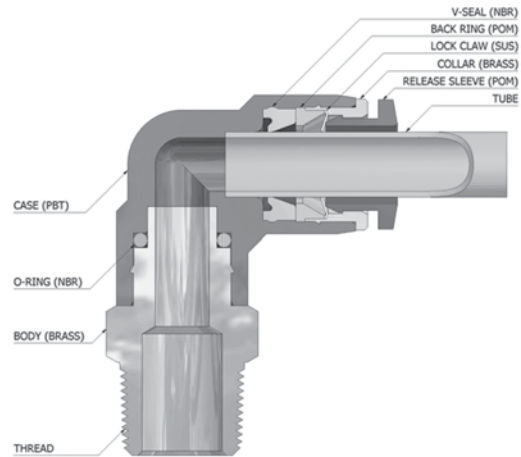
### How to Order

**SQ L 06 - 01 S - X2-W**

1
2
3
4
5

- |   |   |
|---|---|
| <p>1 Model</p> <p>2 Applicable Tube O. D.</p> <p>    04 : Ø4</p> <p>    06 : Ø6</p> <p>    08 : Ø8</p> <p>    10 : Ø10</p> <p>    12 : Ø12</p> <p>3 Port Size</p> <p>    M5 : M5 x 0.8</p> <p>    01 : R(c) 1/8</p> | <p>    02 : R(c) 1/4</p> <p>    03 : R(c) 3/8</p> <p>    04 : R(c) 1/2</p> <p>4 Sealant Screw</p> <p>    S : Sealant</p> <p>5 Nickel Coated</p> <p>    Blank : Standard Type</p> <p>    X2 : Copper-free(Nickel Coated)</p> |
|---|---|

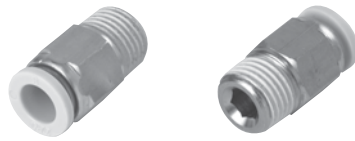
### Structural Diagram



### Standard Specifications

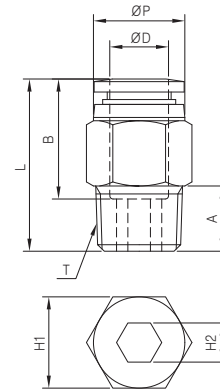
Fluid Type	Air
Max. Operating Pressure	0~150psi (0~9.9kgf/cm <sup>2</sup> )
Ambient and Fluid Temperature	0~60 °C
Applicable Tube O.D	Ø4, Ø6, Ø8, Ø10, Ø12

# SQH



## METRIC-BSPT(R)

MODEL	ØD (Tube Size)	T (Thread Size)	ØP	L	A	B	H1	H2 (Hex.)	Weight (g)
SQH 04-M5A	4	M5×0.8	10.0	20.8	4.6	14.7	Ø10	2	6.0
SQH 04-M5		M5×0.8		20.8	4.0		—	7.0	
SQH 04-01S		R 1/8		21.9	8.0		H10	3	9.0
SQH 04-02S		R 1/4		20.9	10.0		H14	3	16.0
SQH 06-M5A	6	M5×0.8	12.0	23.1	4.6	16.4	Ø12	2	10.0
SQH 06-M5		M5×0.8		23.1	4.0		—	10.0	
SQH 06-01S		R 1/8		22.4	8.0		H12	4	10.0
SQH 06-02S		R 1/4		21.9	10.0		H14	5	14.0
SQH 06-03S	R 3/8	22.9	11.0	H17	5	25.0			
SQH 08-01S	8	R 1/8	14.0	28.4	8.0	18.4	H14	5	15.0
SQH 08-02S		R 1/4		26.4	10.0		H14	6	16.0
SQH 08-03S		R 3/8		23.9	11.0		H17	6	24.0
SQH 08-04S		R 1/2		29.4	14.0		H19	6	49.0
SQH 10-01S	10	R 1/8	16.1	29.8	8.0	19.6	H17	5	21.0
SQH 10-02S		R 1/4		31.3	10.0		H17	6	24.0
SQH 10-03S		R 3/8		27.4	11.0		H17	8	24.0
SQH 10-04S		R 1/2		29.8	14.0		H19	8	45.0
SQH 12-02S	12	R 1/4	19.0	33.7	10.0	21.9	H19	6	30.0
SQH 12-03S		R 3/8		30.7	11.0		H19	8	29.0
SQH 12-04S		R 1/2		30.2	14.0		H19	8	38.0



SN

SP2000

SP4000

**SQ**

SC

SP

SHF · SHS

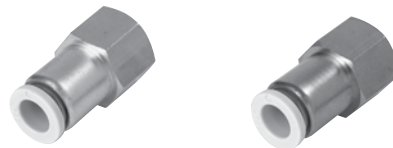
DC

SQ2

ST

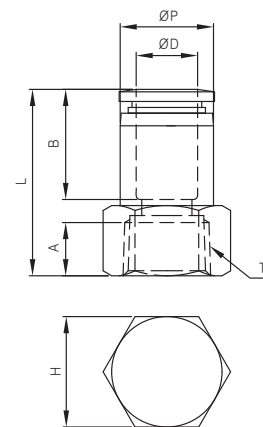
SF

# SQF



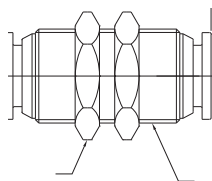
## METRIC-BSPT(R)

MODEL	ØD (Tube Size)	T (Thread Size)	ØP	L	A	B	H (Hex.)	Weight (g)
SQF 04-01	4	Rc 1/8	10.0	27.0	9.0	14.7	14	17.0
SQF 04-02		Rc 1/4		29.0	11.0		17	22.0
SQF 06-01	6	Rc 1/8	12.0	28.2	9.0	16.4	14	18.0
SQF 06-02		Rc 1/4		30.2	11.0		17	24.0
SQF 06-03		Rc 3/8		31.2	12.0		22	38.0
SQF 08-01	8	Rc 1/8	14.0	29.4	9.0	18.4	14	19.0
SQF 08-02		Rc 1/4		31.4	11.0		17	24.0
SQF 08-03		Rc 3/8		32.4	12.0		22	39.0
SQF 08-04		Rc 1/2		34.4	14.0		24	41.0
SQF 10-01	10	Rc 1/8	16.4	32.5	9.0	19.6	17	31.0
SQF 10-02		Rc 1/4		32.5	11.0		17	26.0
SQF 10-03		Rc 3/8		33.5	12.0		22	41.0
SQF 10-04		Rc 1/2		35.5	14.0		24	43.0
SQF 12-02	12	Rc 1/4	19.0	37.1	11.0	21.9	22	54.0
SQF 12-03		Rc 3/8		37.1	12.0		22	46.0
SQF 12-04		Rc 1/2		39.1	14.0		24	50.0



## Series SQ

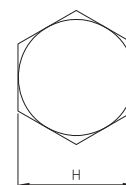
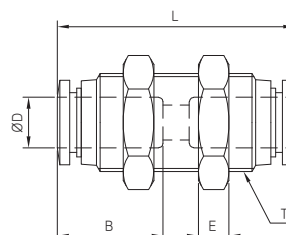
# SQE-00



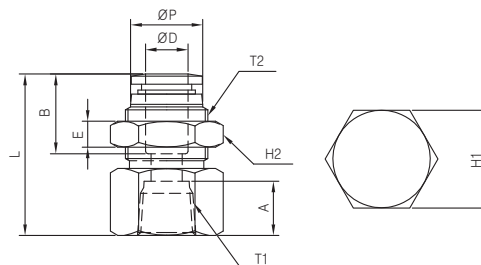
### METRIC-BSPT(R)

MODEL	∅D (Tube Size)	T (Thread Size)	L	E	B	H (Hex.)	Weight (g)
SQE 04-00	4	M12×1.0	35.5	4	14.7	14	20.0
SQE 06-00	6	M14×1.0	39.9	4	16.4	17	29.0
SQE 08-00	8	M16×1.0	42.2	5	18.4	19	39.0
SQE 10-00	10	M20×1.0	45.0	5	19.6	24	66.0
SQE 12-00	12	M22×1.0	50.3	5	21.9	26	83.0

Unit : mm



# SQE



### METRIC-BSPT(R)

MODEL	∅D (Tube Size)	T1 (Thread Size)	∅P	T2 (Thread Size)	L	E	A	B	H1 (Hex.)	H2 (Hex.)	Weight (g)
SQE 04-01	4	Rc 1/8	10.0	M12×1.0	27.0	4	9.0	14.7	14	14	20.0
SQE 06-01	6	Rc 1/8	12.0	M14×1.0	30.2	4	9.0	16.4	17	17	34.0
SQE 06-02		Rc 1/4			30.2		11.0		17	28.0	
SQE 08-01	8	Rc 1/8	14.0	M16×1.0	31.4	5	9.0	18.4	19	19	45.0
SQE 08-02		Rc 1/4			31.4		11.0		19		40.0
SQE 08-03		Rc 3/8			32.4		12.0		22		46.0
SQE 10-02	10	Rc 1/4	16.1	M20×1.0	33.5	5	11.0	19.6	24	24	71.0
SQE 10-03		Rc 3/8			33.5		12.0		24		66.0
SQE 10-04		Rc 1/2			35.5		14.0		24		58.0
SQE 12-02	12	Rc 1/4	19.0	M22×1.0	38.3	5	11.0	21.9	24	26	85.0
SQE 12-03		Rc 3/8			38.3		12.0		24		76.0
SQE 12-04		Rc 1/2			40.3		14.0		24		70.0

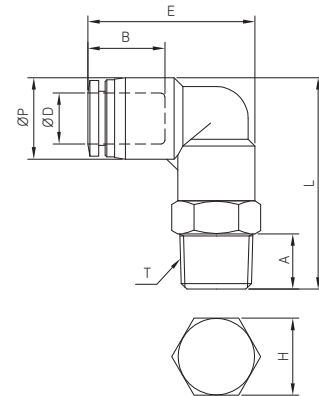
Unit : mm

# SQL



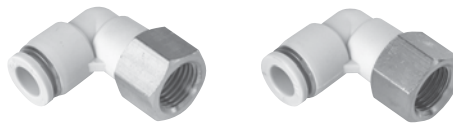
## METRIC-BSPT(R)

MODEL	ØD (Tube Size)	T (Thread Size)	ØP	L	E	A	B	H (Hex.)	Weight (g)
SQL04-M5	4	M5×0.8	10.5	25.7	23.6	4.0	14.9	10	6.0
SQL04-01S		R1/8		29.7		8.0		10	10.0
SQL04-02S		R1/4		31.7		10.0		14	15.0
SQL06-M5	6	M5×0.8	12.5	28.7	26.3	4.0	16.4	12	7.0
SQL06-01S		R 1/8		32.7		8.0		12	13.0
SQL06-02S		R 1/4		35.7		10.0		14	19.0
SQL06-03S		R 3/8		36.7		11.0		17	27.0
SQL08-01S	8	R 1/8	14.8	35.4	30.3	8.0	18.7	14	18.0
SQL08-02S		R 1/4		38.4		10.0		14	22.0
SQL08-03S		R 3/8		39.4		11.0		17	27.0
SQL08-04S		R 1/2		42.4		14.0		21	43.0
SQL10-01S	10	R 1/8	17.5	37.2	33.0	8.0	20.1	17	26.0
SQL10-02S		R 1/4		40.2		10.0		17	28.0
SQL10-03S		R 3/8		41.2		11.0		17	30.0
SQL10-04S		R 1/2		44.2		14.0		21	48.0
SQL12-02S	12	R 1/4	20.5	44.6	38.1	10.0	22.8	19	40.0
SQL12-03S		R 3/8		45.6		11.0		19	43.0
SQL12-04S		R 1/2		48.6		14.0		21	52.0



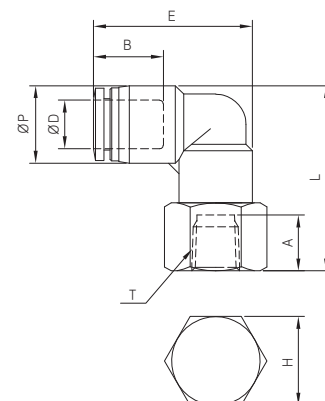
- SN
- SP2000
- SP4000
- SQ**
- SC
- SP
- SHF · SHS
- DC
- SQ2
- ST
- SF

# SQLF



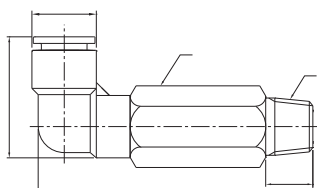
## METRIC-BSPT(R)

MODEL	ØD (Tube Size)	T (Thread Size)	ØP	L	E	A	B	H (Hex.)	Weight (g)
SQLF 04-M5	4	M5×0.8	10.5	26.7	23.6	8.0	14.9	10	10.0
SQLF 04-01		Rc 1/8		27.7		9.0		14	15.0
SQLF 04-02		Rc 1/4		29.7		11.0		17	20.0
SQLF 06-M5	6	M5×0.8	12.5	29.7	26.3	8.0	16.4	12	16.0
SQLF 06-01		Rc 1/8		30.7		9.0		14	17.0
SQLF 06-02		Rc 1/4		32.7		11.0		17	23.0
SQLF 06-03		Rc 3/8		33.7		12.0		22	36.0
SQLF 08-01	8	Rc 1/8	14.8	33.4	30.3	9.0	18.7	14	19.0
SQLF 08-02		Rc 1/4		35.4		11.0		17	26.0
SQLF 08-03		Rc 3/8		36.4		12.0		22	38.0
SQLF 10-02		Rc 1/4		37.2		11.0		17	29.0
SQLF 10-03	10	Rc 3/8	17.5	38.2	33.0	12.0	20.1	22	42.0
SQLF 10-04		Rc 1/2		40.2		14.0		24	44.0
SQLF 12-02		Rc 1/4		41.6		11.0		19	40.0
SQLF 12-03	12	Rc 3/8	20.5	42.6	38.1	12.0	22.8	22	48.0
SQLF 12-04		Rc 1/2		44.6		14.0		24	49.0



## Series SQ

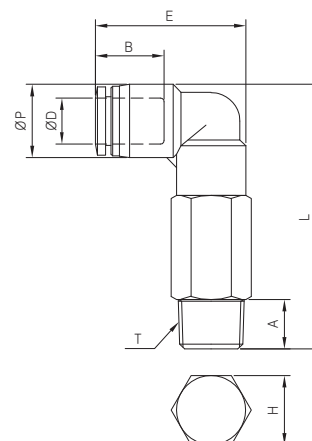
# SQW



### METRIC-BSPT(R)

Unit : mm

MODEL	ØD (Tube Size)	T (Thread Size)	ØP	L	E	A	B	H (Hex.)	Weight (g)
SQW 04-M5	4	M5×0.8	10.5	38.2	23.6	4.1	14.9	10	18.0
SQW 04-01S		R1/8		40.7		8.0		10	16.0
SQW 04-02S		R1/4		42.7		10.0		14	28.0
SQW 06-M5	6	M5×0.8	12.5	43.7	26.3	4.1	16.4	12	25.0
SQW 06-01S		R1/8		46.2		8.0		12	25.0
SQW 06-02S		R1/4		48.2		10.0		14	33.0
SQW 06-03S		R3/8		49.2		11.0		17	48.0
SQW 08-01S		R1/8		51.4		8.0		14	37.0
SQW 08-02S	R1/4	53.4	10.0	14	37.0				
SQW 08-03S	R3/8	54.4	11.0	17	60.0				
SQW 08-04S	R1/2	57.4	14.0	22	90.0				
SQW 10-01S	R1/8	56.4	8.0	17	65.0				
SQW 10-02S	R1/4	58.4	10.0	17	65.0				
SQW 10-03S	R3/8	59.4	11.0	17	57.0				
SQW 10-04S	R1/2	62.4	14.0	22	100.0				
SQW 12-02S	R1/4	66.1	10.0	19	90.0				
SQW 12-03S	R3/8	67.1	11.0	19	84.0				
SQW 12-04S	R1/2	70.1	14.0	22	116.0				



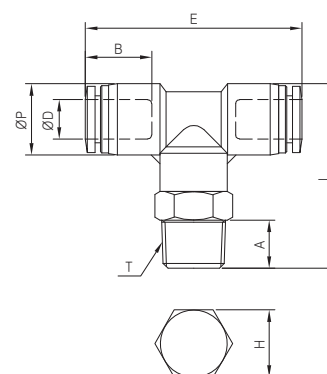
# SQT



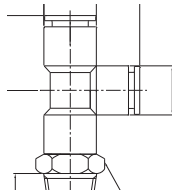
### METRIC-BSPT(R)

Unit : mm

MODEL	ØD (Tube Size)	T (Thread Size)	ØP	L	E	A	B	H (Hex.)	Weight (g)
SQT 04-M5	4	M5×0.8	10.5	25.7	37.3	4.0	14.9	10	10.0
SQT 04-01S		R1/8		29.7		8.0		10	11.0
SQT 04-02S		R1/4		31.7		10.0		14	17.0
SQT 06-M5	6	M5×0.8	12.5	28.7	40.7	4.0	16.4	12	15.0
SQT 06-01S		R1/8		32.7		8.0		12	17.0
SQT 06-02S		R1/4		35.7		10.0		14	21.0
SQT 06-03S		R3/8		36.7		11.0		17	29.0
SQT 08-01S		R1/8		35.4		8.0		14	21.0
SQT 08-02S	R1/4	38.4	10.0	14	24.0				
SQT 08-03S	R3/8	39.4	11.0	17	31.0				
SQT 08-04S	R1/2	42.4	14.0	21	54.0				
SQT 10-01S	R1/8	37.2	8.0	17	33.0				
SQT 10-02S	R1/4	40.2	10.0	17	35.0				
SQT 10-03S	R3/8	41.2	11.0	17	36.0				
SQT 10-04S	R1/2	44.2	14.0	21	60.0				
SQT 12-02S	R1/4	44.6	10.0	19	47.0				
SQT 12-03S	R3/8	45.6	11.0	19	50.0				
SQT 12-04S	R1/2	48.6	14.0	21	60.0				

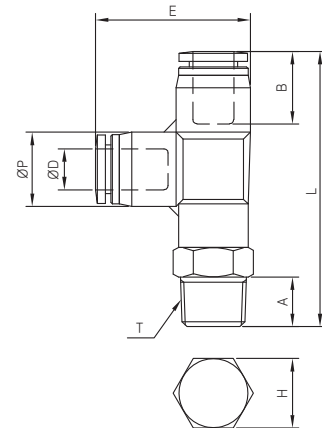


# SQY



**METRIC-BSPT(R)**

MODEL	ØD (Tube Size)	T (Thread Size)	ØP	L	E	A	B	H (Hex.)	Weight (g)
SQY 04-M5	4	M5×0.8	10.6	41.6	24.9	4.0	14.9	10	10.0
SQY 04-01S		R1/8		45.1		8.0		10	12.0
SQY 04-02S		R1/4		47.1		10.0		14	18.0
SQY 06-M5	6	M5×0.8	13.0	44.9	27.9	4.0	16.4	12	15.0
SQY 06-01S		R 1/8		48.4		8.0		12	19.0
SQY 06-02S		R 1/4		51.4		10.0		14	23.0
SQY 06-03S		R 3/8		52.4		11.0		17	31.0
SQY 08-01S		R 1/8		52.5		8.0		14	17.0
SQY 08-02S	R 1/4	55.5	10.0	18.7	14	25.0			
SQY 08-03S	R 3/8	56.5	11.0	17	30.0				
SQY 08-04S	R 1/2	59.5	14.0	21	54.0				
SQY 10-01S	R 1/8	55.7	8.0	17	34.0				
SQY 10-02S	R 1/4	58.7	10.0	20.1	17	36.0			
SQY 10-03S	R 3/8	59.7	11.0	17	38.0				
SQY 10-04S	R 1/2	62.7	14.0	21	60.0				
SQY 12-02S	R 1/4	65.0	10.0	19	50.0				
SQY 12-03S	R 3/8	66.0	11.0	19	52.0				
SQY 12-04S	R 1/2	69.0	14.0	21	66.0				



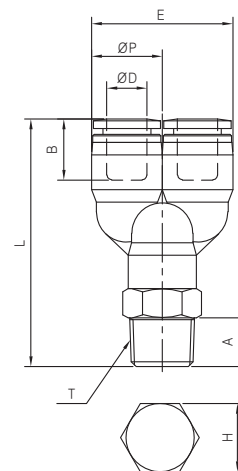
- SN
- SP2000
- SP4000
- SQ**
- SC
- SP
- SHF · SHS
- DC
- SQ2
- ST
- SF

# SQU



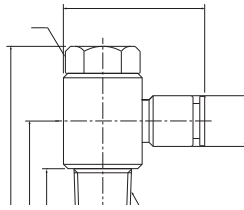
**METRIC-BSPT(R)**

MODEL	ØD (Tube Size)	T (Thread Size)	ØP	L	E	A	B	H (Hex.)	Weight (g)
SQU 04-M5	4	M5×0.8	10.5	39.5	21.0	4.0	15.6	10	11.0
SQU 04-01S		R 1/8		43.5		8.0		10	12.0
SQU 04-02S		R 1/4		45.5		10.0		14	18.0
SQU 06-M5	6	M5×0.8	12.5	40.4	25.0	4.0	16.9	12	16.0
SQU 06-01S		R 1/8		44.4		8.0		12	17.0
SQU 06-02S		R 1/4		47.4		10.0		14	22.0
SQU 06-03S		R 3/8		48.4		11.0		17	32.0
SQU 08-01S		R 1/8		47.8		8.0		14	22.0
SQU 08-02S	R 1/4	50.8	10.0	19.0	14	24.0			
SQU 08-03S	R 3/8	51.8	11.0	17	38.0				
SQU 08-04S	R 1/2	54.8	14.0	21	50.0				
SQU 10-01S	R 1/8	51.2	8.0	17	35.0				
SQU 10-02S	R 1/4	54.2	10.0	20.2	17	37.0			
SQU 10-03S	R 3/8	55.2	11.0	17	40.0				
SQU 10-04S	R 1/2	58.2	14.0	21	63.0				
SQU 12-02S	R 1/4	59.1	10.0	19	52.0				
SQU 12-03S	R 3/8	60.1	11.0	19	53.0				
SQU 12-04S	R 1/2	63.1	14.0	21	66.0				



## Series SQ

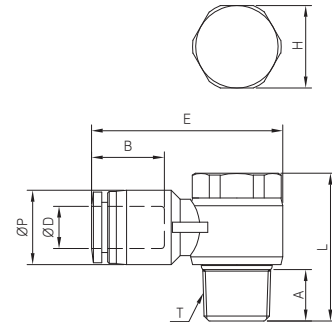
# SQV



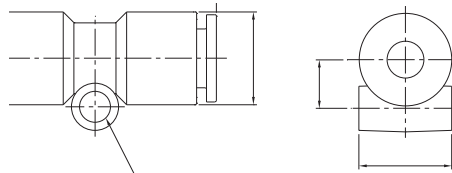
### METRIC-BSPT(R)

Unit : mm

MODEL	∅D (Tube Size)	T (Thread Size)	∅P	L	E	A	B	H (Hex.)	Weight (g)
SQV 04-M5	4	M5×0.8	10.5	18.2	25.3	3.6	14.9	8	8.0
SQV 04-01S		R 1/8		25.0	30.4	7.5		11	15.0
SQV 04-02S		R 1/4		28.8	34.4	10.0		15	27.0
SQV 06-M5	6	M5×0.8	12.5	18.2	27.7	3.6	16.4	8	9.0
SQV 06-01S		R 1/8		25.0	31.2	7.5		11	16.0
SQV 06-02S		R 1/4		28.8	35.2	10.0		15	27.0
SQV 06-03S		R 3/8		32.7	38.7	11.0		19	48.0
SQV 08-01S	8	R 1/8	14.5	25.0	33.3	7.5	18.7	11	17.0
SQV 08-02S		R 1/4		28.8	37.3	10.0		15	28.0
SQV 08-03S		R 3/8		32.7	40.3	11.0		19	50.0
SQV 08-04S		R 1/2		39.0	46.2	14.0		24	77.0
SQV 10-02S	10	R 1/4	17.5	28.8	38.8	10.0	20.1	15	32.0
SQV 10-03S		R 3/8		32.7	42.1	11.0		19	51.0
SQV 10-04S		R 1/2		39.0	47.3	14.0		24	78.0
SQV 12-03S	12	R 3/8	20.5	32.7	45.1	11.0	22.8	19	53.0
SQV 12-04S		R 1/2		39.0	50.0	14.0		24	82.0



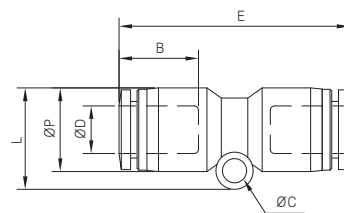
# SQH-00



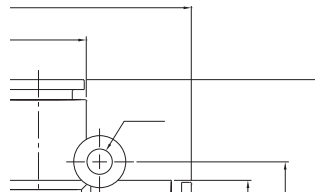
### METRIC-BSPT(R)

Unit : mm

MODEL	∅D (Tube Size)	∅P	L	E	∅C	B	Weight (g)
SQH 04-00	4	10.5	12.7	34.3	3.3	14.9	4.0
SQH 06-00	6	12.5	14.7	36.5	3.3	16.4	7.0
SQH 08-00	8	14.5	17.6	40.1	4.3	18.7	9.0
SQH 10-00	10	17.5	20.0	43.4	4.3	20.1	13.0
SQH 12-00	12	20.5	23.3	48.3	4.3	22.8	20.0



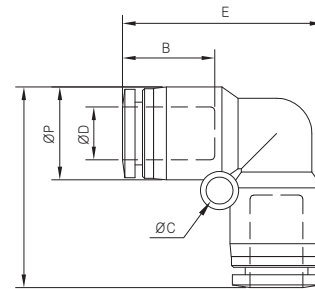
# SQL-00



**METRIC-BSPT(R)**

MODEL	ØD (Tube Size)	ØP	L	E	ØC	B	Weight (g)
SQL 04-00	4	10.6	24.1	24.1	3.3	14.9	5.0
SQL 06-00	6	12.5	27.3	27.3	4.3	16.4	6.0
SQL 08-00	8	14.5	31.3	31.3	4.3	18.7	9.0
SQL 10-00	10	17.5	33.9	33.9	4.3	20.1	13.0
SQL 12-00	12	20.5	38.8	38.8	4.3	22.8	22.0

Unit : mm



SN

SP2000

SP4000

**SQ**

SC

SP

SHF · SHS

DC

SQ2

ST

SF

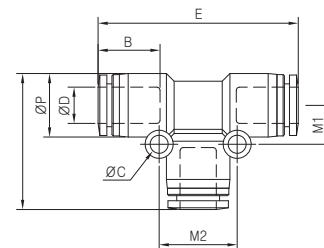
# SQT-00



**METRIC-BSPT(R)**

MODEL	ØD (Tube Size)	ØP	L	E	ØC	B	M1	M2	Weight (g)
SQT 04-00	4	10.5	24.0	36.3	3.3	14.9	6.4	12.6	7.0
SQT 06-00	6	12.5	27.3	41.5	3.3	16.4	7.7	15.4	10.0
SQT 08-00	8	14.5	31.0	45.6	4.3	18.7	8.9	17.8	13.0
SQT 10-00	10	17.5	34.1	48.4	4.3	20.1	9.8	19.7	19.0
SQT 12-00	12	20.5	40.1	57.3	4.3	22.8	13.2	26.3	29.0

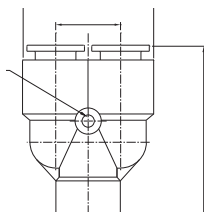
Unit : mm





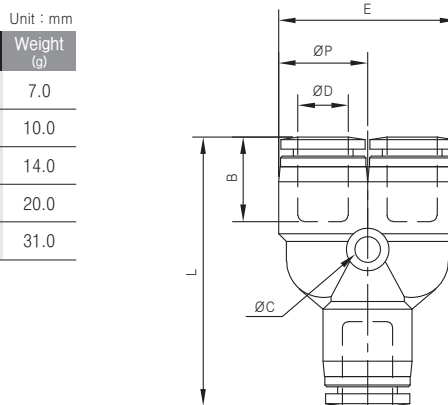
## Series SQ

# SQU-00

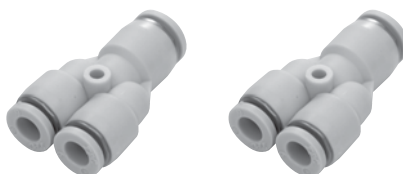


### METRIC-BSPT(R)

MODEL	ØD (Tube Size)	ØP	L	E	ØC	B	Weight (g)
SQU 04-00	4	10.5	36.3	21.0	3.3	16.1	7.0
SQU 06-00	6	13.0	39.3	26.0	3.3	17.6	10.0
SQU 08-00	8	14.6	44.1	29.2	4.3	19.0	14.0
SQU 10-00	10	17.5	47.1	35.0	4.5	19.8	20.0
SQU 12-00	12	21.0	54.1	42.0	4.5	22.7	31.0

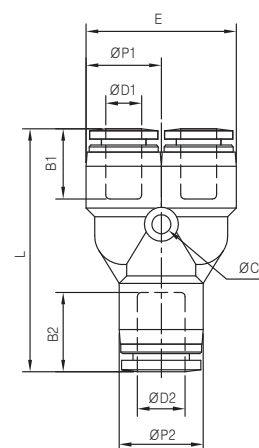


# SQU-R

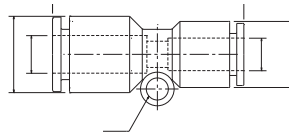


### METRIC-BSPT(R)

MODEL	ØD1 (Tube Size)	ØD2 (Tube Size)	ØP1	ØP2	L	E	ØC	B1	B2	Weight (g)
SQU 04-06	4	6	10.5	13.0	37.8	21.0	3.3	16.1	17.6	7.0
SQU 06-08	6	8	13.0	14.6	42.2	26.0	3.3	17.6	19.0	11.0
SQU 08-10	8	10	14.6	17.5	44.8	29.2	4.3	19.0	19.7	15.0
SQU 10-12	10	12	17.5	21.0	50.6	35.0	4.5	19.8	22.7	24.0



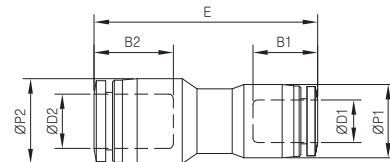
# SQH-R



## METRIC-BSPT(R)

Unit : mm

MODEL	ØD1 (Tube Size)	ØD2 (Tube Size)	ØP1	ØP2	E	B1	B2	Weight (g)
SQH 04-06	4	6	10.5	12.5	35.2	14.9	16.4	6.0
SQH 06-08	6	8	12.5	14.5	38.1	16.4	18.7	8.0
SQH 08-10	8	10	14.5	17.5	40.3	18.7	20.1	10.0
SQH 10-12	12	12	17.5	20.5	43.8	20.1	22.8	14.0



SN

SP2000

SP4000

**SQ**

SC

SP

SHF · SHS

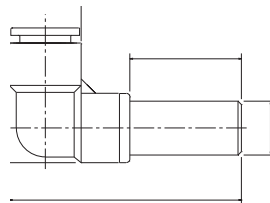
DC

SQ2

ST

SF

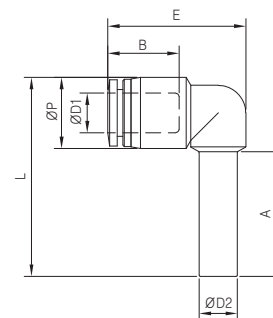
# SQL-99



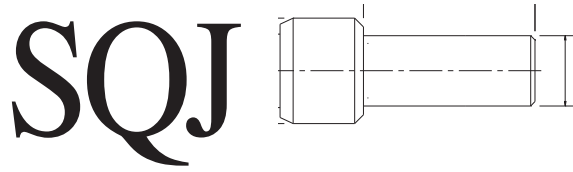
## METRIC-BSPT(R)

Unit : mm

MODEL	ØD1 (Tube Size)	ØD2 (Tube Size)	ØP	L	E	A	B	Weight (g)
SQL04-99	4	4	10.5	33.6	22.6	22.0	14.9	4.0
SQL06-99	6	6	12.5	37.6	25.3	24.0	16.4	9.0
SQL08-99	8	8	14.8	41.5	28.8	26.0	18.7	8.0
SQL10-99	10	10	17.5	46.6	31.2	28.0	20.1	10.0
SQL12-99	12	12	20.5	51.7	36.0	30.0	22.8	17.0



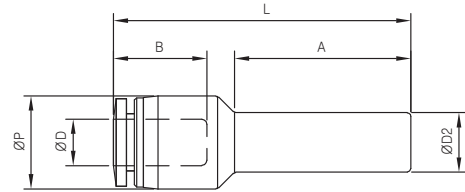
## Series SQ



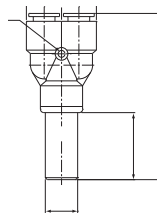
### METRIC-BSPT(R)

Unit : mm

MODEL	∅D (Tube Size)	∅D2	∅P	L	A	B	Weight (g)
SQJ 04-06	4	6	10.5	37.8	21.7	14.9	3.0
SQJ 04-08	4	8	10.5	39.8	24.7	14.9	4.0
SQJ 06-08	6	8	12.5	40.0	23.7	16.4	5.0
SQJ 06-10	6	10	12.5	44.0	28.7	16.4	6.0
SQJ 06-12	6	12	12.5	50.0	34.4	16.4	6.0
SQJ 08-10	8	10	14.8	46.8	27.6	18.7	7.0
SQJ 08-12	8	12	14.8	50.8	32.6	18.7	7.0
SQJ 10-12	10	12	17.5	50.8	31.2	20.1	8.0



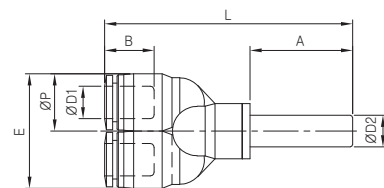
# SQU-99



### METRIC-BSPT(R)

Unit : mm

MODEL	∅D (Tube Size)	∅D2	∅P	L	E	A	B	Weight (g)
SQU 04-99	4	4	10.5	56.5	21.0	24.0	15.6	5.0
SQU 06-99	6	6	12.5	58.4	25.0	25.0	16.9	9.0
SQU 08-99	8	8	14.5	62.8	29.0	26.0	19.0	11.0
SQU 10-99	10	10	17.6	68.5	35.2	28.0	20.2	18.0
SQU 12-99	12	12	21.0	75.6	42.0	30.0	22.6	28.0

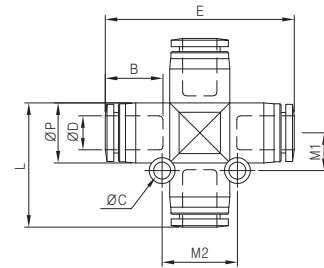


# SQZ-00



## METRIC-BSPT(R)

MODEL	ØD (Tube Size)	ØP	L	E	ØC	B	Unit : mm		Weight (g)
							M1	M2	
SQZ 04-00	4	10.5	23.2	35.9	3.3	14.9	6.4	12.7	9.0
SQZ 06-00	6	12.5	27.0	41.5	3.3	16.4	7.4	14.9	12.0
SQZ 08-00	8	14.5	30.0	45.6	4.2	18.7	9.1	18.2	18.0
SQZ 10-00	10	17.5	32.9	48.4	4.3	20.1	10.1	20.3	24.0
SQZ 12-00	12	20.5	37.9	55.3	4.3	22.8	11.8	23.7	40.0



SN

SP2000

SP4000

**SQ**

SC

SP

SHF · SHS

DC

SQ2

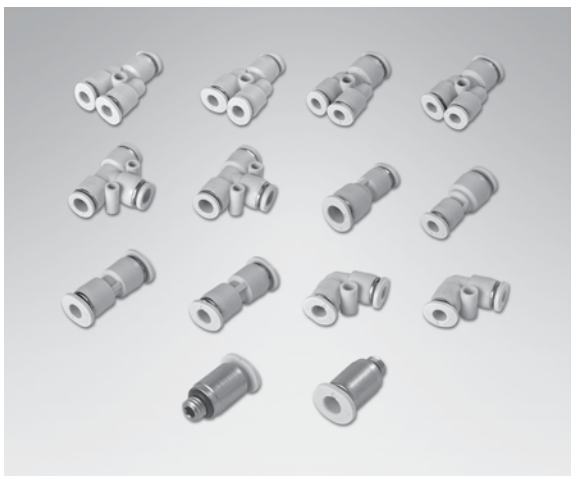
ST

SF

# Series SC

## Compact Fittings

### Compact One-Touch Fittings



#### Features

- ONE ACTION INSERTS THE TUBE TO EASY CONNECTION AND RELEASE
- VOLUME AND OD ARE SMALLER THAN THE REGULAR TYPE, BUT SAME FLUX IS OBTAINED
- TREATED WITH ELECTROLESS NICKEL COATING ON THE SURFACE FOR EXCELLENT TOLERANCE TO CORROSION
- OVAL SLEEVE IS DESIGNED TO ALLOW EASY RELEASE IN LIMITED SPACE
- THE SCREW SECTION HAS O-RINGS, OR IS SEALANT COATED
- MINIATURIZED FITTING FOR SMALL DEVICES AND PIPING IN LIMITED SPACES

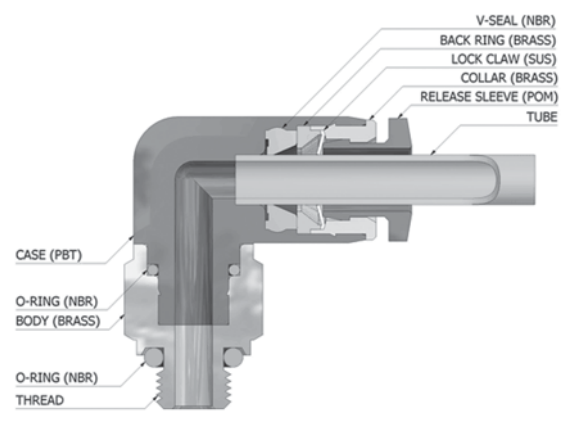
### How to Order

**SC L 04 - 01 S**

1
2
3
4

- 1 Model
- 2 Applicable Tube O. D.  
04 : Ø4  
06 : Ø6
- 3 Port Size  
M5 : M5 x 0.8  
01 : R(c) 1/8
- 4 Sealant Screw  
S : Sealant

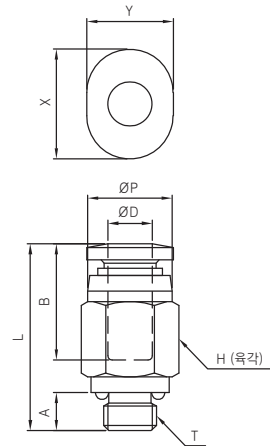
### Structural Diagram



### Standard Specifications

Fluid Type	Air
Max. Operating Pressure	0~150psi (0~9.9kgf/cm <sup>2</sup> )
Ambient and Fluid Temperature	0~60 °C
Applicable Tube O.D	Ø4, Ø6

# SCH

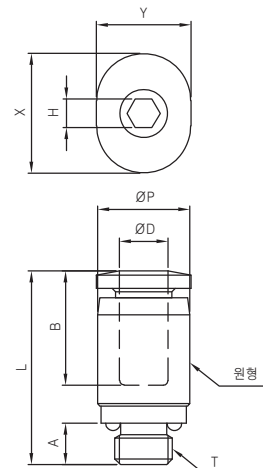


## METRIC-BSPT(R)

MODEL	ØD (Tube Size)	T (Tube Size)	ØP	L	A	B	H (Hex.)	X	Y	Weight (g)
SCH 04-M5	4	M5×0.8	8.0	17.1	3.6	11.7	8	10.4	8.2	4.0
SCH 04-01S		R 1/8		16.7	8.0		10			6.0
SCH 06-M5	6	M5×0.8	10.0	18.5	3.6	12.8	10	12.4	10.2	5.0
SCH 06-01S		R 1/8		19.0	8.0		10			7.0

Unit : mm

# SCH-A

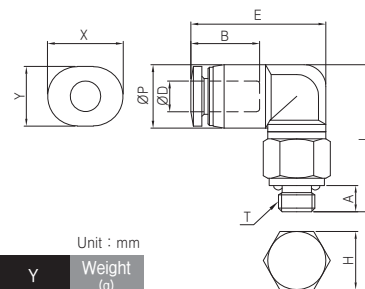


## METRIC-BSPT(R)

MODEL	ØD (Tube Size)	T (Tube Size)	ØP	L	A	B	H (Hex.)	X	Y	Weight (g)
SCH 04-M5A	4	M5×0.8	8.0	16.9	3.6	11.7	2.5	10.4	8.2	4.0
SCH 04-01SA		R 1/8		15.7	8.0		3.0			5.0
SCH 06-M5A	6	M5×0.8	10.0	18.5	3.6	12.8	2.5	12.4	10.2	5.0
SCH 06-01SA		R 1/8		19.0	8.0		4.0			6.0

Unit : mm

# SCL



## METRIC-BSPT(R)

MODEL	ØD (Tube Size)	T (Tube Size)	ØP	L	E	A	B	H (Hex.)	X	Y	Weight (g)
SCL 04-M5	4	M5×0.8	8.7	20.2	18.6	3.6	11.8	8	10.4	8.2	4.0
SCL 04-01S		R 1/8		20.7		8.0		10			7.0
SCL 06-M5	6	M5×0.8	10.8	22.3	19.6	3.6	12.9	8	12.4	10.2	4.0
SCL 06-01S		R 1/8		22.8		8.0		10			7.0

Unit : mm

SN

SP2000

SP4000

SQ

SC

SP

SHF · SHS

DC

SQ2

ST

SF

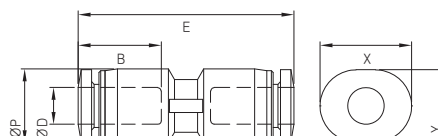
# SCH-00



## METRIC-BSPT(R)

MODEL	ØD (Tube Size)	ØP	E	B	X	Y	Weight (g)
SCH 04-00	4	8.4	24.5	11.8	10.4	8.2	3.0
SCH 06-00	6	10.6	26.8	26.8	12.4	10.2	3.0

Unit : mm



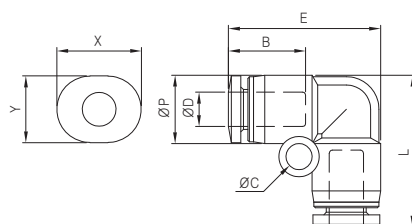
# SCL-00



## METRIC-BSPT(R)

MODEL	ØD (Tube Size)	ØP	L	E	ØC	B	X	Y	Weight (g)
SCL 04-00	4	8.4	18.7	18.7	3.2	11.8	10.4	8.2	3.0
SCL 06-00	6	10.6	21.9	21.9	3.2	12.9	12.4	10.2	3.0

Unit : mm



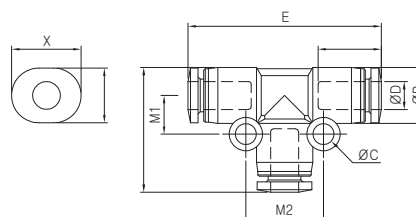
# SCT-00



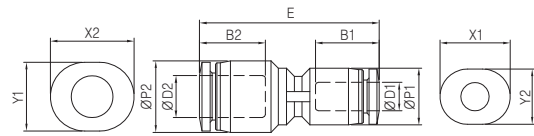
## METRIC-BSPT(R)

MODEL	ØD (Tube Size)	ØP	L	E	ØC	B	M1	M2	X	Y	Weight (g)
SCT 04-00	4	8.4	18.7	28.9	3.2	11.8	5.8	11.6	10.4	8.2	3.0
SCT 06-00	6	10.6	21.9	33.2	3.2	12.9	6.9	13.8	12.4	10.2	6.0

Unit : mm



# SCH-R



## METRIC-BSPT(R)

MODEL	ØD1 (Tube Size)	ØD2 (Tube Size)	ØP1	ØP2	E	B1	B2	X1	Y1	X2	Y2	Weight (g)
SCH 04-06	4	6	8.4	10.6	26.6	11.8	12.9	10.4	8.2	12.4	10.2	3.0

Unit : mm

SN

SP2000

SP4000

SQ

**SC**

SP

SHF · SHS

DC

SQ2

ST

SF

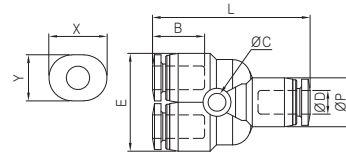
# SCU-00



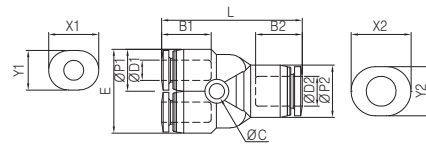
## METRIC-BSPT(R)

MODEL	ØD (Tube Size)	ØP	L	E	ØC	B	X	Y	Weight (g)
SCU 04-00	4	8.7	28.0	17.4	3.2	11.8	10.4	8.2	5.0
SCU 06-00	6	10.8	30.8	21.6	3.2	12.9	12.4	10.2	6.0

Unit : mm



# SCU-R



## METRIC-BSPT(R)

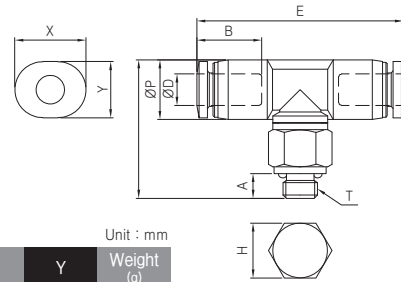
MODEL	ØD1 (Tube Size)	ØD2 (Tube Size)	ØP1	ØP2	L	E	ØC	B1	B2	X1	Y1	X2	Y2	Weight (g)
SCU 04-06	4	6	8.7	10.8	29.1	17.4	3.2	11.8	12.9	10.4	8.2	12.4	10.2	5.0

Unit : mm



## Series SC

# SCT



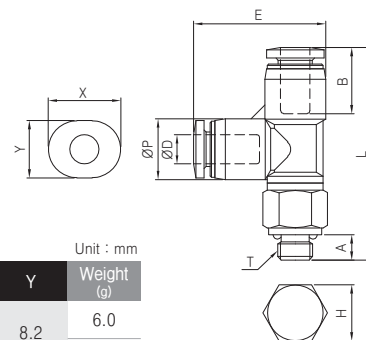
### METRIC-BSPT(R)

MODEL	ØD (Tube Size)	T (Tube Size)	ØP	L	E	A	B	H (Hex.)	X	Y	Weight (g)
SCT 04-M5	4	M5×0.8	8.7	20.2	30.1	3.6	11.8	8	10.4	8.2	5.0
SCT 04-01S		R 1/8		20.7		8.0		10			7.0
SCT 06-M5	6	M5×0.8	10.8	22.3	32.2	3.6	12.9	8	12.4	10.2	7.0
SCT 06-01S		R 1/8		22.8		8.0		10			9.0

Unit : mm



# SCY



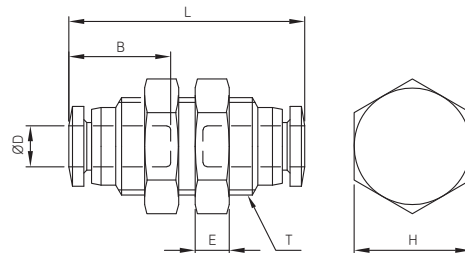
### METRIC-BSPT(R)

MODEL	ØD (Tube Size)	T (Tube Size)	ØP	L	E	A	B	H (Hex.)	X	Y	Weight (g)
SCY 04-M5	4	M5×0.8	8.7	30.4	18.9	3.6	11.8	8	10.4	8.2	6.0
SCY 04-01S		R 1/8		30.9		8.0		10			9.0
SCY 06-M5	6	M5×0.8	10.8	33.5	22.0	3.6	12.9	8	12.4	10.2	7.0
SCY 06-01S		R 1/8		34.0		8.0		10			10.0

Unit : mm



# SCE-00

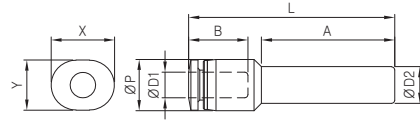


### METRIC-BSPT(R)

MODEL	ØD (Tube Size)	ØD2 (Tube Size)	L	E	B	H (Hex.)	Weight (g)
SCE 04-00	4	M10×1.0	24.3	3.5	11.7	12	10.0
SCE 06-00	6	M12×1.0	27.1	4	12.8	14	14.0

Unit : mm

# SCJ



**METRIC-BSPT(R)**

Unit : mm

MODEL	ØD1 (Tube Size)	ØD2 (Tube Size)	ØP	L	A	B	X	Y	Weight (g)
SCJ 04-06	4	6	8.4	33.7	21.8	11.8	10.4	8.2	3.0

SN

SP2000

SP4000

SQ

**SC**

SP

SHF · SHS

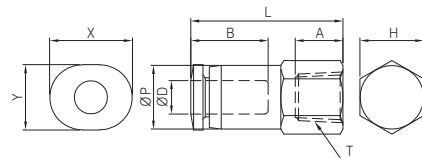
DC

SQ2

ST

SF

# SCF



**METRIC-BSPT(R)**

Unit : mm

MODEL	ØD (Tube Size)	T (Tube Size)	ØP	L	A	B	H (Hex.)	X	Y	Weight (g)
SCF 04-M5	4	M5×0.8	8.0	19.2	6.0	11.7	8	10.4	8.2	4.0
SCF 04-01S		Rc 1/8		22.7	8.5		12			5.0
SCF 06-M5	6	M5×0.8	10.0	19.8	6.0	12.8	10	12.4	10.2	5.0
SCF 06-01S		Rc 1/8		23.8	8.5		12			6.0