

# PushOne® A Series

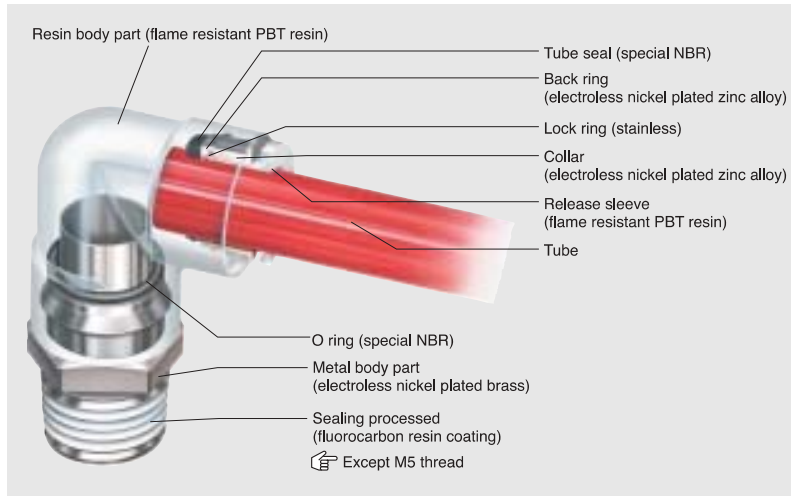
PushOne® fittings for general air pressure (flame resistant)

## Features

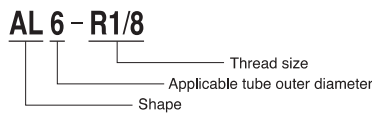
- PushOne® connection of tube  
The tubes can be connected without using a jig or tools
- Electroless nickel plated  
Preventing degradation of surface and dissolution of copper ions in fluid
- White body illuminative to working environment
- Flame-resistant resin (compliant V-0 of UL94 standard)  
Made of flame-resistant resin PBT. High self-extinguishing performance is compliant with V-0 of UL94 standard. Usable under an environment with spatters.
- Sealing-processed R thread.  
Sealing tape is not required.



## Cross-sectional structure diagram



## Product number example



## Operating fluid, working temperature range

Operating fluid	Working temperature range
Air	-20°C~+80°C
Water	0°C~+40°C

See "Combination List of Tube and Fitting" on page 8.

## Pressure condition







**Maximum working pressure:** 1.0MPa  
**Negative pressure performance:** -99.975kPa

## Handling instructions

- ⚠ **Caution** When the working conditions of tubes and fittings differ, use them under the lower specified conditions.
- ⚠ **Caution** When water is used as the operating fluid, confirm that there is no water leakage damage to equipment and instruments due to construction failure.
- ⚠ **Caution** When water is used as the operating fluid, do not allow it to freeze.
- ⚠ **Caution** Do not bend the pipe sharply near the tube insertion port of the fitting. Keep the tube straight for twice as long as the tube diameter from the insertion port.

See page 34 for the common handling instructions for tube fittings.

## Applicable tube

Polyurethane tube	Nylon tube	Flame-resistant tube	Antistatic tube	Polyolefine resin tube	Fluorocarbon resin tube
 U2***P.12 U1***P.13 U5***P.14	 N2***P.15 N5***P.16 N1***P.17	 FS***P.20 FW***P.21 FWU***P.22	 UE***P.23	 PL***P.26 PN***P.27	 TA***P.28 TP***P.29

(\*1) When the PushOne A series is used with a UE tube, choose a metal body type including a connector and a hexagonal socket to maintain conductivity between the tube and the fittings.  
 (\*2) Combinatory use of PL, PN, TA or TP tube and PushOne A series mixes general and clean type performances. When using them in a clean environment, pay attention to the clean level that could be lowered.

## Reference

Instruction manual	P.178
UL-94 standard flame test	P.204
Effective cross-sectional area	P.176
Negative-pressure performance list	P.177

## Allied products and product introduction

 P.144	 P.151	 P.156	 P.159	 P.160	 P.169
----------------------------------------------------------------------------------------------	----------------------------------------------------------------------------------------------	----------------------------------------------------------------------------------------------	----------------------------------------------------------------------------------------------	----------------------------------------------------------------------------------------------	-----------------------------------------------------------------------------------------------

# PushOne® A Series

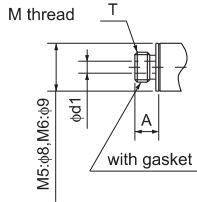
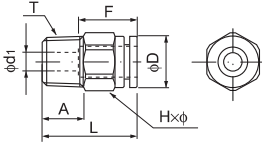
## Shape list



- Tube
- Clean tube
- Processed tube
- PushOne fitting**
- QuickSeal fitting
- Clean fitting/ Chemifit
- Bamboo-shoot fitting
- Control switch/ Detachable series
- Jig/Tool/ Accessory
- Technical information
- Reference

Connector

●Millimeter size type

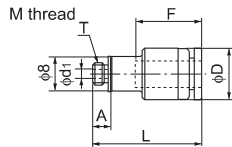
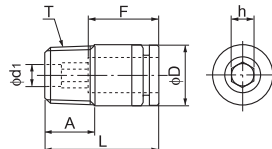


Product number	Applicable tube outer diameter (mm)	T Thread size (M,R)	L (mm)	A (mm)	F Tube insertion length (mm)	H×φ Width across flat (mm)	D (mm)	d <sub>1</sub> (mm)	Effective cross-sectional area (mm <sup>2</sup> )	Weight (g)
AC4-M5	4	M5×0.8	22.4	4.0	13	10.0×11.0	9.6	2.0	3.0	6.0
AC4-R1/8	4	R1/8	19.4	8.0	13	10.0×11.0	9.6	2.5	4.0	7.0
AC4-R1/4	4	R1/4	22.4	11.0	13	14.0×15.4	9.6	2.5	4.0	17.0
AC6-M5	6	M5×0.8	24.2	4.0	15	12.0×13.0	11.7	2.0	3.5	9.0
AC6-M6	6	M6×1.0	25.2	5.0	15	12.0×13.0	11.7	3.0	4.5	10.0
AC6-R1/8	6	R1/8	21.2	8.0	15	12.0×13.0	11.7	4.0	10.5	9.0
AC6-R1/4	6	R1/4	24.2	11.0	15	14.0×15.4	11.7	4.0	10.5	18.0
AC6-R3/8	6	R3/8	25.2	12.0	15	17.0×18.5	11.7	4.0	10.5	32.0
AC8-R1/8	8	R1/8	26.2	8.0	16	14.0×15.4	13.7	5.0	20.0	14.0
AC8-R1/4	8	R1/4	25.2	11.0	16	14.0×15.4	13.7	6.0	25.0	16.0
AC8-R3/8	8	R3/8	26.2	12.0	16	17.0×18.5	13.7	6.0	26.0	29.0
AC10-R1/8	10	R1/8	30.1	8.0	19	17.0×18.5	16.7	5.0	25.0	24.0
AC10-R1/4	10	R1/4	28.1	11.0	19	17.0×18.5	16.7	8.0	40.0	21.0
AC10-R3/8	10	R3/8	29.1	12.0	19	17.0×18.5	16.7	8.0	40.0	29.0
AC10-R1/2	10	R1/2	32.1	15.0	19	22.0×24.5	16.7	8.0	40.0	61.0
AC12-R1/4	12	R1/4	34.0	11.0	20	19.0×21.0	18.6	8.0	45.0	32.0
AC12-R3/8	12	R3/8	30.0	12.0	20	19.0×21.0	18.6	10.0	50.0	31.0
AC12-R1/2	12	R1/2	33.0	15.0	20	22.0×24.5	18.6	10.0	50.0	58.0
AC16-R3/8	16	R3/8	41.6	12.0	27	24.0×26.5	24.5	10.0	77.0	68.0
AC16-R1/2	16	R1/2	43.6	15.0	27	24.0×26.5	24.5	12.0	110.5	83.0

\*Made to order

Hexagon socket connector

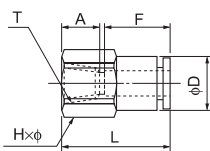
●Millimeter size type



Product number	Applicable tube outer diameter (mm)	T Thread size (M,R)	L (mm)	A (mm)	F Tube insertion length (mm)	h Width across flat (mm)	D (mm)	d <sub>1</sub> (mm)	Effective cross-sectional area (mm <sup>2</sup> )	Weight (g)
AC4-M5A	4	M5×0.8	19.4	4.0	13	2.0	9.8	2.0	—	5.0
AC4-R1/8A	4	R1/8	19.4	8.0	13	2.5	9.8	2.5	—	7.0
AC6-M5A	6	M5×0.8	24.2	4.0	15	4.0	11.8	2.0	—	—
AC6-R1/8A	6	R1/8	21.2	8.0	15	4.0	11.8	4.0	—	8.0
AC6-R1/4A	6	R1/4	24.2	11.0	15	4.0	13.8	4.0	—	17.0
AC8-R1/8A	8	R1/8	26.2	8.0	16	5.0	13.8	5.0	—	12.0
AC8-R1/4A	8	R1/4	25.2	11.0	16	5.0	13.8	5.0	—	15.0
AC10-R1/4A	10	R1/4	28.1	11.0	19	6.0	16.8	6.0	—	19.0
AC10-R3/8A	10	R3/8	29.1	12.0	19	6.0	16.8	6.0	—	28.0

Internal connector

●Millimeter size type



Product number	Applicable tube outer diameter (mm)	T Thread size (Rc)	L (mm)	A (mm)	F Tube insertion length (mm)	H×φ Width across flat (mm)	D (mm)	Min. inner diameter (mm)	Effective cross-sectional area (mm <sup>2</sup> )	Weight (g)
AFC4-R1/8	4	Rc1/8	23.9	8.7	13	14.0×15.4	10.0	3.0	4.0	16.0
AFC6-R1/8	6	Rc1/8	24.8	8.7	15	14.0×15.4	12.0	5.0	10.5	17.0
AFC6-R1/4	6	Rc1/4	29.3	13.0	15	17.0×18.5	12.0	5.0	10.5	26.0
AFC8-R1/4	8	Rc1/4	30.9	13.0	16	17.0×18.5	13.9	7.0	25.0	28.0
AFC8-R3/8	8	Rc3/8	31.4	13.5	16	22.0×24.5	13.9	7.0	26.0	45.0
AFC10-R1/4	10	Rc1/4	33.9	13.0	19	17.0×18.5	16.9	9.0	40.0	34.0
AFC10-R3/8	10	Rc3/8	34.4	13.5	19	22.0×24.5	16.9	9.0	40.0	50.0
AFC10-R1/2	10	Rc1/2	38.4	17.5	19	24.0×26.5	16.9	9.0	40.0	56.0
AFC12-R1/4	12	Rc1/4	34.5	13.0	20	19.0×21.0	19.0	10.0	45.0	43.0
AFC12-R3/8	12	Rc3/8	35.3	13.5	20	22.0×24.5	19.0	11.0	50.0	50.0
AFC12-R1/2	12	Rc1/2	39.3	17.5	20	24.0×26.5	19.0	11.0	50.0	58.0

Tube

Clean tube

Processed tube

PushOne fitting

QuickSeal fitting

Clean fitting/ Chemifit

Bamboo-shoot fitting

Control switch/ Detachable series

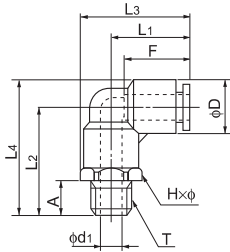
Jig/Tool/ Accessory

Technical information

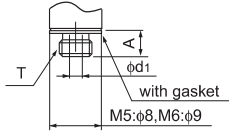
Reference

## 90 degree elbow

### ●Millimeter size type



M thread

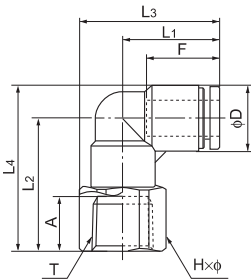


Product number	Applicable tube outer diameter (mm)	T Thread size (M,R)	L <sub>1</sub> (mm)	L <sub>2</sub> (mm)	L <sub>3</sub> (mm)	L <sub>4</sub> (mm)	A (mm)	F Tube insertion length (mm)	H×φ Width across flat (mm)	D (mm)	d <sub>1</sub> (mm)	Min. inner diameter (mm)	Effective cross-sectional area (mm <sup>2</sup> )	Weight (g)
AL4-M5	4	M5×0.8	17.2	20.2	22.7	25.1	4.0	13	10.0×11.0	9.8	2.0	2.0	3.0	7.0
AL4-R1/8	4	R1/8	17.2	22.7	22.7	27.6	8.0	13	10.0×11.0	9.8	5.0	3.0	4.0	9.0
AL4-R1/4	4	R1/4	17.2	26.7	24.9	31.6	11.0	13	14.0×15.4	9.8	7.0	3.0	4.0	16.0
AL6-M5	6	M5×0.8	18.5	22.7	25.0	29.0	4.0	15	12.0×13.0	12.6	2.0	2.0	3.5	10.0
AL6-M6	6	M6×1.0	18.5	22.7	25.0	29.0	5.0	15	12.0×13.0	12.6	3.0	3.0	4.5	11.0
AL6-R1/8	6	R1/8	18.5	25.2	25.0	31.5	8.0	15	12.0×13.0	12.6	5.0	5.0	12.0	18.0
AL6-R1/4	6	R1/4	18.5	29.2	26.2	35.5	11.0	15	14.0×15.4	12.6	7.0	5.0	12.0	18.0
AL6-R3/8	6	R3/8	18.5	30.2	27.8	36.5	12.0	15	17.0×18.5	12.6	9.0	5.0	12.0	26.0
AL8-R1/8	8	R1/8	20.7	26.2	28.4	33.5	8.0	16	14.0×15.4	14.5	5.0	5.0	18.5	15.0
AL8-R1/4	8	R1/4	20.7	30.2	28.4	37.5	11.0	16	14.0×15.4	14.5	7.0	7.0	23.0	20.0
AL8-R3/8	8	R3/8	20.7	31.2	30.0	38.5	12.0	16	17.0×18.5	14.5	9.0	7.0	23.0	28.0
AL10-R1/8	10	R1/8	24.7	29.2	33.9	38.0	8.0	19	17.0×18.5	17.5	5.0	5.0	22.0	22.0
AL10-R1/4	10	R1/4	24.7	33.2	33.9	42.0	11.0	19	17.0×18.5	17.5	7.0	7.0	34.5	27.0
AL10-R3/8	10	R3/8	24.7	34.2	33.9	43.0	12.0	19	17.0×18.5	17.5	9.0	9.0	37.0	33.0
AL10-R1/2	10	R1/2	24.7	38.2	36.9	47.0	15.0	19	22.0×24.5	17.5	12.0	9.0	37.0	52.0
AL12-R1/4	12	R1/4	26.3	35.7	36.8	45.7	11.0	20	19.0×21.0	20.0	7.0	7.0	36.0	34.0
AL12-R3/8	12	R3/8	26.3	36.7	36.8	46.7	12.0	20	19.0×21.0	20.0	9.0	9.0	43.0	39.0
AL12-R1/2	12	R1/2	26.3	40.7	38.6	50.7	15.0	20	22.0×24.5	20.0	12.0	10.0	43.0	56.0
AL16-R3/8	16	R3/8	34.9	45.0	48.4	58.8	12.0	27	24.0×27.0	28.0	11.0	11.0	70.0	70.0
AL16-R1/2	16	R1/2	34.9	48.0	48.4	61.8	15.0	27	24.0×27.0	28.0	12.0	12.0	93.0	84.0

\*Made to order

## 90 degree internal elbow

### ●Millimeter size type



Product number	Applicable tube outer diameter (mm)	T Thread size (Rc)	L <sub>1</sub> (mm)	L <sub>2</sub> (mm)	L <sub>3</sub> (mm)	L <sub>4</sub> (mm)	A (mm)	F Tube insertion length (mm)	H×φ Width across flat (mm)	D (mm)	Min. inner diameter (mm)	Effective cross-sectional area (mm <sup>2</sup> )	Weight (g)
AFL4-R1/8	4	Rc1/8	17.2	21.7	24.9	22.1	8.0	13	14.0×15.4	9.8	3.0	—	—
AFL6-R1/8	6	Rc1/8	18.5	24.2	26.2	30.5	8.0	15	14.0×15.4	12.6	5.0	—	15.0
AFL6-R1/4	6	Rc1/4	18.5	28.2	27.8	34.5	12.0	15	17.0×18.5	12.6	5.0	—	23.0
AFL6-R3/8	6	Rc3/8	18.5	28.7	30.8	35.0	12.5	15	22.0×24.5	12.6	5.0	—	37.0
AFL8-R1/8	8	Rc1/8	20.7	25.2	28.4	32.5	8.0	16	14.0×15.4	14.6	7.0	—	17.0
AFL8-R1/4	8	Rc1/4	20.7	29.2	30.0	36.5	12.0	16	17.0×18.5	14.6	7.0	—	25.0
AFL8-R3/8	8	Rc3/8	20.7	29.7	33.0	37.0	12.5	16	22.0×24.5	14.6	7.0	—	38.0
AFL10-R1/4	10	Rc1/4	24.7	32.2	34.0	41.0	12.0	19	17.0×18.5	17.5	9.0	—	29.0
AFL10-R3/8	10	Rc3/8	24.7	33.7	37.0	42.5	12.5	19	22.0×24.5	17.5	9.0	—	45.0
AFL12-R3/8	12	Rc3/8	26.3	36.2	38.6	46.2	12.5	20	22.0×24.5	20.0	10.0	—	49.0
AFL12-R1/2	12	Rc1/2	26.3	39.2	39.6	49.2	15.5	20	24.0×26.5	20.0	10.0	—	54.0

Tube

Clean tube

Processed tube

PushOne fitting

QuickSeal fitting

Clean fitting/ Chemifit

Bamboo-shoot fitting

Control switch/ Detachable series

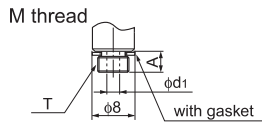
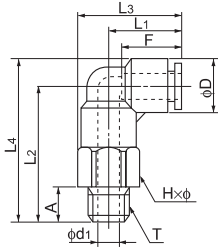
Jig/Tool/ Accessory

Technical information

Reference

## 90 degree long elbow

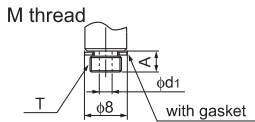
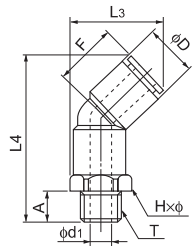
### ●Millimeter size type



Product number	Applicable tube outer diameter (mm)	T Thread size (M,R)	L <sub>1</sub> (mm)	L <sub>2</sub> (mm)	L <sub>3</sub> (mm)	L <sub>4</sub> (mm)	A (mm)	F Tube insertion length (mm)	H×φ Width across flat (mm)	D (mm)	d <sub>1</sub> (mm)	Min. inner diameter (mm)	Effective cross-sectional area (mm <sup>2</sup> )	Weight (g)
ALL4-M5	4	M5×0.8	17.2	29.9	22.7	34.8	4.0	13	10.0×11.0	9.8	2.0	2.0	3.0	13.0
ALL4-R1/8	4	R1/8	17.2	32.4	22.7	37.3	8.0	13	10.0×11.0	9.8	5.0	3.0	4.0	14.0
ALL4-R1/4	4	R1/4	17.2	36.4	24.9	41.3	11.0	13	14.0×15.4	9.8	7.0	3.0	4.0	27.0
ALL6-M5	6	M5×0.8	18.5	34.7	25.0	41.0	4.0	15	12.0×13.0	12.6	2.0	2.0	3.5	20.0
ALL6-R1/8	6	R1/8	18.5	37.2	25.0	43.5	8.0	15	12.0×13.0	12.6	5.0	5.0	12.0	22.0
ALL6-R1/4	6	R1/4	18.5	41.2	26.2	47.5	11.0	15	14.0×15.4	12.6	7.0	5.0	12.0	31.0
ALL6-R3/8	6	R3/8	18.5	42.2	27.8	48.5	12.0	15	17.0×18.5	12.6	9.0	5.0	12.0	45.0
ALL8-R1/8	8	R1/8	20.7	40.2	28.4	47.5	8.0	16	14.0×15.4	14.6	5.0	5.0	18.5	30.0
ALL8-R1/4	8	R1/4	20.7	44.2	28.4	51.5	11.0	16	14.0×15.4	14.6	7.0	7.0	23.0	35.0
ALL8-R3/8	8	R3/8	20.7	45.2	30.0	52.5	12.0	16	17.0×18.5	14.6	9.0	7.0	23.0	50.0
ALL10-R1/8	10	R1/8	24.7	46.2	33.9	55.0	8.0	19	17.0×18.5	17.5	5.0	5.0	22.0	48.0
ALL10-R1/4	10	R1/4	24.7	50.2	33.9	59.0	11.0	19	17.0×18.5	17.5	7.0	7.0	34.5	53.0
ALL10-R3/8	10	R3/8	24.7	51.2	33.9	60.0	12.0	19	17.0×18.5	17.5	9.0	9.0	37.0	59.0
ALL10-R1/2	10	R1/2	24.7	55.2	36.9	64.0	15.0	19	22.0×24.5	17.5	12.0	9.0	37.0	94.0
ALL12-R1/4	12	R1/4	26.3	55.2	36.8	65.2	11.0	20	19.0×21.0	20.0	7.0	7.0	36.0	72.0
ALL12-R3/8	12	R3/8	26.3	56.2	36.8	66.2	12.0	20	19.0×21.0	20.0	9.0	9.0	43.0	78.0
ALL12-R1/2	12	R1/2	26.3	60.2	38.6	70.2	15.0	20	22.0×24.5	20.0	12.0	10.0	43.0	105.0

## 45 degree elbow

### ●Millimeter size type



Product number	Applicable tube outer diameter (mm)	T Thread size (M,R)	L <sub>3</sub> (mm)	L <sub>4</sub> (mm)	A (mm)	F Tube insertion length (mm)	H×φ Width across flat (mm)	D (mm)	d <sub>1</sub> (mm)	Min. inner diameter (mm)	Effective cross-sectional area (mm <sup>2</sup> )	Weight (g)
A45L4-M5	4	M5×0.8	19.7	34.4	4.0	13	10.0×11.0	9.8	2.0	2.0	3.0	7.0
A45L4-R1/8	4	R1/8	19.7	36.9	8.0	13	10.0×11.0	9.8	5.0	3.0	4.0	9.0
A45L4-R1/4	4	R1/4	21.9	40.9	11.0	13	14.0×15.4	9.8	7.0	3.0	4.0	16.0
A45L6-M5	6	M5×0.8	22.4	38.6	4.0	15	12.0×13.0	12.6	2.0	2.0	3.5	10.0
A45L6-R1/8	6	R1/8	22.4	41.1	8.0	15	12.0×13.0	12.6	5.0	5.0	12.0	12.0
A45L6-R1/4	6	R1/4	23.6	45.1	11.0	15	14.0×15.4	12.6	7.0	5.0	12.0	18.0
A45L6-R3/8	6	R3/8	25.2	46.1	12.0	15	17.0×18.5	12.6	9.0	5.0	12.0	26.0
A45L8-R1/8	8	R1/8	25.5	44.0	8.0	16	14.0×15.4	14.6	5.0	5.0	18.5	15.0
A45L8-R1/4	8	R1/4	25.5	48.0	11.0	16	14.0×15.4	14.6	7.0	7.0	23.0	20.0
A45L8-R3/8	8	R3/8	27.0	49.0	12.0	16	17.0×18.5	14.6	9.0	7.0	23.0	28.0
A45L10-R1/8	10	R1/8	30.0	50.0	8.0	19	17.0×18.5	17.5	5.0	5.0	22.0	22.0
A45L10-R1/4	10	R1/4	30.0	54.0	11.0	19	17.0×18.5	17.5	7.0	7.0	34.5	27.0
A45L10-R3/8	10	R3/8	30.0	55.0	12.0	19	17.0×18.5	17.5	9.0	9.0	37.0	33.0
A45L10-R1/2	10	R1/2	33.0	59.0	15.0	19	22.0×24.5	17.5	12.0	9.0	38.5	52.0
A45L12-R1/4	12	R1/4	33.5	58.7	11.0	20	19.0×21.0	20.0	7.0	7.0	43.0	34.0
A45L12-R3/8	12	R3/8	33.5	59.7	12.0	20	19.0×21.0	20.0	9.0	9.0	47.0	40.0
A45L12-R1/2	12	R1/2	35.3	63.7	15.0	20	22.0×24.5	20.0	12.0	10.0	47.0	57.0

Tube

Clean tube

Processed tube

PushOne fitting

QuickSeal fitting

Clean fitting/ Chemifit

Bamboo-shoot fitting

Control switch/ Detachable series

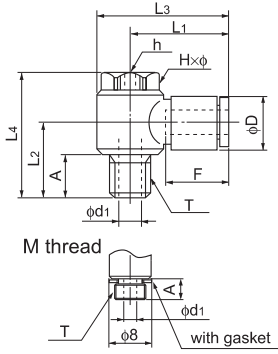
Jig/Tool/ Accessory

Technical information

Reference

## Universal elbow

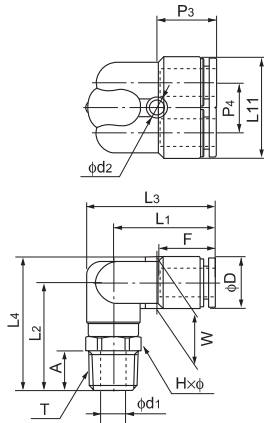
### ●Millimeter size type



Product number	Applicable tube outer diameter (mm)	T Thread size (M,R)	L1 (mm)	L2 (mm)	L3 (mm)	L4 (mm)	A (mm)	F Tube insertion length (mm)	Hxφ Width across flat (mm)	h (mm)	D (mm)	d1 (mm)	Min. inner diameter (mm)	Effective cross-sectional area (mm <sup>2</sup> )	Weight (g)
ALB4-M5	4	M5x0.8	20.4	11.5	25.3	21.0	4.0	13	8.0x9.0	3.0	9.8	2.0	2.0	3.0	10.0
ALB4-R1/8	4	R1/8	23.4	17.5	30.4	30.0	9.5	13	13.0x14.0	5.0	9.8	5.0	3.0	4.0	20.0
ALB6-M5	6	M5x0.8	20.8	11.5	25.6	21.0	4.0	15	8.0x9.0	3.0	12.6	2.0	2.0	3.5	10.0
ALB6-R1/8	6	R1/8	22.8	17.5	29.8	30.0	9.5	15	13.0x14.0	5.0	12.6	5.0	3.2	8.0	21.0
ALB6-R1/4	6	R1/4	24.8	22.9	34.5	37.5	13.4	15	17.0x18.3	6.0	12.6	7.0	4.2	9.0	43.0
ALB8-R1/8	8	R1/8	24.4	17.5	31.4	30.0	9.5	16	13.0x14.0	5.0	14.6	5.0	3.2	9.0	41.0
ALB8-R1/4	8	R1/4	26.4	22.9	36.1	37.5	13.4	16	17.0x18.3	6.0	14.6	7.0	4.2	14.5	44.0
ALB8-R3/8	8	R3/8	28.4	24.4	40.4	40.5	13.9	16	21.0x22.6	8.0	14.6	9.0	6.0	19.0	69.0
ALB10-R1/4	10	R1/4	29.4	22.9	39.1	37.5	13.4	19	17.0x18.3	6.0	17.5	7.0	4.2	15.5	74.0
ALB10-R3/8	10	R3/8	31.4	24.4	43.4	40.5	13.9	19	21.0x22.6	8.0	17.5	9.0	6.0	23.0	74.0
ALB12-R3/8	12	R3/8	34.3	24.3	48.3	40.5	13.8	20	24.0x26.0	8.0	20.0	10.0	8.0	25.5	92.0
ALB12-R1/2	12	R1/2	34.3	27.3	48.3	43.5	16.8	20	24.0x26.0	8.0	20.0	12.0	8.0	25.5	100.0

## 90 degree branch elbow

### ●Millimeter size type



Product number	Applicable tube outer diameter (mm)	T Thread size (R)	L1 (mm)	L2 (mm)	L3 (mm)	L4 (mm)	L11 (mm)	A (mm)	F Tube insertion length (mm)	Hxφ Width across flat (mm)	P3 (mm)	P4 (mm)	W (mm)	D (mm)	d1 (mm)	d2 (mm)	Effective cross-sectional area (mm <sup>2</sup> )	Weight (g)
ALY6-R1/8	6	R1/8	25.6	25.2	32.1	31.5	24.8	8.0	15	12.0x13.0	14.8	12.2	12.6	12.6	5.0	4.2	—	16.0
ALY6-R1/4	6	R1/4	25.6	29.2	33.3	35.5	24.8	11.0	15	14.0x15.4	14.8	12.2	12.6	12.6	7.0	4.2	—	23.0
ALY8-R1/8	8	R1/8	28.2	26.2	35.9	33.5	28.8	8.0	16	14.0x15.4	16.4	14.2	14.6	14.6	5.0	4.2	—	21.0
ALY8-R1/4	8	R1/4	28.2	30.2	35.9	37.5	28.8	11.0	16	14.0x15.4	16.4	14.2	14.6	14.6	7.0	4.2	—	27.0
ALY8-R3/8	8	R3/8	28.2	31.2	37.5	38.5	28.8	12.0	16	17.0x18.5	16.4	14.2	14.6	14.6	9.0	4.2	—	35.0
ALY10-R1/4	10	R1/4	31.3	33.2	40.5	42.0	35.0	11.0	19	17.0x18.5	18.4	17.5	17.5	17.5	7.0	4.2	—	37.0
ALY10-R3/8	10	R3/8	31.3	34.2	40.5	43.0	35.0	12.0	19	17.0x18.5	18.4	17.5	17.5	17.5	9.0	4.2	—	43.0

Tube

Clean tube

Processed tube

PushOne fitting

QuickSeal fitting

Clean fitting/ Chemifit

Bamboo-shoot fitting

Control switch/ Detachable series

Jig/Tool/ Accessory

Technical information

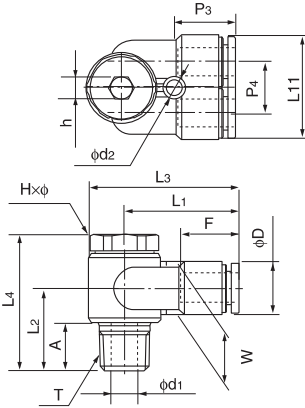
Reference

## Universal branch elbow

●Millimeter size type



Product number	Applicable tube outer diameter (mm)	T Thread size (R)	L <sub>1</sub> (mm)	L <sub>2</sub> (mm)	L <sub>3</sub> (mm)	L <sub>4</sub> (mm)	L <sub>11</sub> (mm)	A (mm)	F Tube insertion length (mm)	H×φ Width across flat (mm)	h Width across flat (mm)	P <sub>3</sub> (mm)	P <sub>4</sub> (mm)	W (mm)	D (mm)	d <sub>1</sub> (mm)	d <sub>2</sub> (mm)	Effective cross-sectional area (mm <sup>2</sup> )	Weight (g)
ALYB6-R1/8	6	R1/8	26.1	17.5	33.1	30.0	24.8	8.0	15	13.0×14.0	5.0	14.8	12.2	12.6	12.6	5.0	4.2	—	25.0
ALYB6-R1/4	6	R1/4	29.0	22.9	38.7	37.5	24.8	11.0	15	17.0×18.3	6.0	14.8	12.2	12.6	12.6	7.0	4.2	—	46.0
ALYB8-R1/4	8	R1/4	30.6	22.9	40.3	37.5	28.8	11.0	16	17.0×18.3	6.0	16.4	14.2	14.6	14.6	7.0	4.2	—	49.0
ALYB8-R3/8	8	R3/8	32.9	22.5	40.5	40.5	28.8	12.0	16	21.0×22.6	8.0	16.4	14.2	14.6	14.6	9.0	4.2	—	58.0
ALYB10-R1/4	10	R1/4	34.9	23.4	46.9	39.5	35.0	11.0	19	21.0×22.6	8.0	18.4	17.5	17.5	17.5	7.0	4.2	—	78.0
ALYB10-R3/8	10	R3/8	34.9	24.4	46.9	40.5	35.0	12.0	19	21.0×22.6	8.0	18.4	17.5	17.5	17.5	9.0	4.2	—	80.0

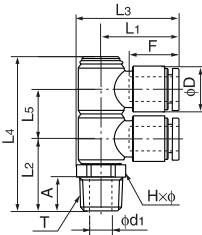


## Double universal elbow

●Millimeter size type



Product number	Applicable tube outer diameter (mm)	T Thread size (R)	L <sub>1</sub> (mm)	L <sub>2</sub> (mm)	L <sub>3</sub> (mm)	L <sub>4</sub> (mm)	L <sub>5</sub> (mm)	A (mm)	F Tube insertion length (mm)	H×φ Width across flat (mm)	D (mm)	d <sub>1</sub> (mm)	Effective cross-sectional area (mm <sup>2</sup> )	Weight (g)
ALWB6-R1/8	6	R1/8	22.8	18.8	30.5	42.3	13.5	8.0	15	14.0×15.4	12.6	5.0	—	33.0
ALWB6-R1/4	6	R1/4	22.8	21.8	30.5	45.3	13.5	11.0	15	14.0×15.4	12.6	7.0	—	35.0
ALWB8-R1/4	8	R1/4	24.4	23.0	32.1	50.0	16.0	11.0	16	14.0×15.4	14.6	7.0	—	39.0
ALWB8-R3/8	8	R3/8	24.4	24.0	32.1	54.0	16.0	12.0	16	17.0×18.5	14.6	9.0	—	47.0
ALWB10-R1/4	10	R1/4	29.4	24.5	39.1	56.0	19.0	11.0	19	17.0×18.5	17.5	7.0	—	72.0
ALWB10-R3/8	10	R3/8	29.4	25.5	39.1	57.0	19.0	12.0	19	17.0×18.5	17.5	9.0	—	70.0

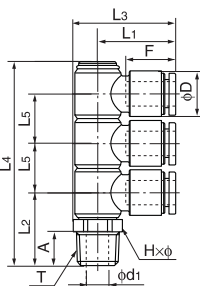


## Triple universal elbow

●Millimeter size type



Product number	Applicable tube outer diameter (mm)	T Thread size (R)	L <sub>1</sub> (mm)	L <sub>2</sub> (mm)	L <sub>3</sub> (mm)	L <sub>4</sub> (mm)	L <sub>5</sub> (mm)	A (mm)	F Tube insertion length (mm)	H×φ Width across flat (mm)	D (mm)	d <sub>1</sub> (mm)	Effective cross-sectional area (mm <sup>2</sup> )	Weight (g)
ALTB6-R1/8	6	R1/8	22.8	18.8	30.5	55.5	13.5	8.0	15	14.0×15.4	12.6	5.0	—	43.0
ALTB6-R1/4	6	R1/4	22.8	21.8	30.5	58.5	13.5	11.0	15	14.0×15.4	12.6	7.0	—	45.0
ALTB8-R1/4	8	R1/4	24.4	23.0	32.1	66.0	16.0	11.0	16	14.0×15.4	14.6	7.0	—	51.0
ALTB8-R3/8	8	R3/8	24.4	24.0	32.1	67.0	16.0	12.0	16	17.0×18.5	14.6	9.0	—	59.0
ALTB10-R1/4	10	R1/4	29.4	24.5	39.1	75.5	19.0	11.0	19	17.0×18.5	17.5	7.0	—	98.0
ALTB10-R3/8	10	R3/8	29.4	25.5	39.1	76.5	19.0	12.0	19	17.0×18.5	17.5	9.0	—	92.0



Tube

Clean tube

Processed tube

PushOne fitting

QuickSeal fitting

Clean fitting/ Chemifit

Bamboo-shoot fitting

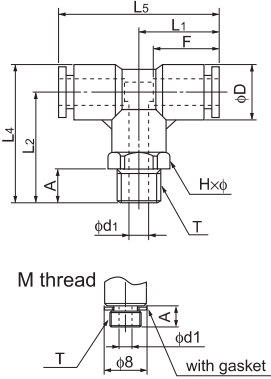
Control switch/ Detachable series

Jig/Tool/ Accessory

Technical information

Reference

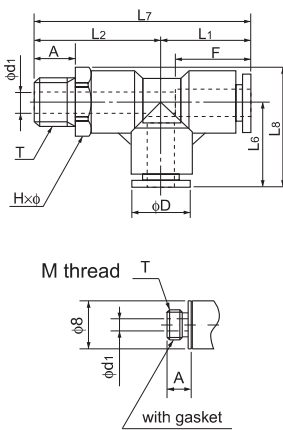
Tee



●Millimeter size type

Product number	Applicable tube outer diameter (mm)	T Thread size (M,R)	L <sub>1</sub> (mm)	L <sub>2</sub> (mm)	L <sub>4</sub> (mm)	L <sub>5</sub> (mm)	A (mm)	F Tube insertion length (mm)	H×φ Width across flat (mm)	D (mm)	d <sub>1</sub> (mm)	Min. inner diameter (mm)	Effective cross-sectional area (mm <sup>2</sup> )	Weight (g)
AT4-M5	4	M5×0.8	17.2	20.2	25.1	34.4	4.0	13	10.0×11.0	9.8	2.0	2.0	3.0	8.0
AT4-R1/8	4	R1/8	17.2	22.7	27.6	34.4	8.0	13	10.0×11.0	9.8	5.0	3.0	4.0	10.0
AT4-R1/4	4	R1/4	17.2	26.7	31.6	34.4	11.0	13	14.0×15.4	9.8	7.0	3.0	4.0	17.0
AT6-M5	6	M5×0.8	18.5	22.7	29.0	37.0	4.0	15	12.0×13.0	12.6	2.0	2.0	3.5	12.0
AT6-R1/8	6	R1/8	18.5	25.2	31.5	37.0	8.0	15	12.0×13.0	12.6	5.0	5.0	12.0	14.0
AT6-R1/4	6	R1/4	18.5	29.2	35.5	37.0	11.0	15	14.0×15.4	12.6	7.0	5.0	12.0	21.0
AT6-R3/8	6	R3/8	18.5	30.2	36.5	37.0	12.0	15	17.0×18.5	12.6	9.0	5.0	12.0	29.0
AT8-R1/8	8	R1/8	20.7	26.2	33.5	41.4	8.0	16	14.0×15.4	14.6	5.0	5.0	18.5	18.0
AT8-R1/4	8	R1/4	20.7	30.2	37.5	41.4	11.0	16	14.0×15.4	14.6	7.0	7.0	23.0	24.0
AT8-R3/8	8	R3/8	20.7	31.2	38.5	41.4	12.0	16	17.0×18.5	14.6	9.0	7.0	23.0	32.0
AT10-R1/8	10	R1/8	24.7	29.2	38.0	49.3	8.0	19	17.0×18.5	17.5	5.0	5.0	22.0	28.0
AT10-R1/4	10	R1/4	24.7	33.2	42.0	49.3	11.0	19	17.0×18.5	17.5	7.0	7.0	34.5	34.0
AT10-R3/8	10	R3/8	24.7	34.2	43.0	49.3	12.0	19	17.0×18.5	17.5	9.0	9.0	37.0	39.0
AT10-R1/2	10	R1/2	24.7	38.2	47.0	49.3	15.0	19	22.0×24.5	17.5	12.0	9.0	37.0	58.0
AT12-R1/4	12	R1/4	26.3	35.7	45.7	52.6	11.0	20	19.0×21.0	20.0	7.0	7.0	36.0	43.0
AT12-R3/8	12	R3/8	26.3	36.7	46.7	52.6	12.0	20	19.0×21.0	20.0	9.0	9.0	43.0	48.0
AT12-R1/2	12	R1/2	26.3	40.7	50.7	52.6	15.0	20	22.0×24.5	20.0	12.0	10.0	43.0	65.0
AT16-R3/8	16	R3/8	34.9	45.0	58.8	69.8	12.0	27	24.0×27.0	28.0	11.0	11.0	70.0	92.0
AT16-R1/2	16	R1/2	34.9	48.0	61.8	69.8	15.0	27	24.0×27.0	28.0	12.0	12.0	93.0	106.0

Service tee



●Millimeter size type

Product number	Applicable tube outer diameter (mm)	T Thread size (M,R)	L <sub>1</sub> (mm)	L <sub>2</sub> (mm)	L <sub>6</sub> (mm)	L <sub>7</sub> (mm)	L <sub>8</sub> (mm)	A (mm)	F Tube insertion length (mm)	H×φ Width across flat (mm)	D (mm)	d <sub>1</sub> (mm)	Min. inner diameter (mm)	Effective cross-sectional area (mm <sup>2</sup> )	Weight (g)
AST4-M5	4	M5×0.8	17.2	20.2	17.2	37.4	22.1	4.0	13	10.0×11.0	9.8	2.0	2.0	3.0	8.0
AST4-R1/8	4	R1/8	17.2	22.7	17.2	39.9	22.1	8.0	13	10.0×11.0	9.8	5.0	3.0	4.0	10.0
AST4-R1/4	4	R1/4	17.2	26.7	17.2	43.9	24.9	11.0	13	14.0×15.4	9.8	7.0	3.0	4.0	18.0
AST6-M5	6	M5×0.8	18.5	22.7	18.5	41.2	25.0	4.0	15	12.0×13.0	12.6	2.0	2.0	3.5	12.0
AST6-R1/8	6	R1/8	18.5	25.2	18.5	43.7	25.0	8.0	15	12.0×13.0	12.6	5.0	5.0	12.0	14.0
AST6-R1/4	6	R1/4	18.5	29.2	18.5	47.7	26.2	11.0	15	14.0×15.4	12.6	7.0	5.0	12.0	21.0
AST6-R3/8	6	R3/8	18.5	30.2	18.5	48.7	27.8	12.0	15	17.0×18.5	12.6	9.0	5.0	12.0	29.0
AST8-R1/8	8	R1/8	20.7	26.2	20.7	46.9	28.4	8.0	16	14.0×15.4	14.6	5.0	5.0	18.5	18.0
AST8-R1/4	8	R1/4	20.7	30.2	20.7	50.9	28.4	11.0	16	14.0×15.4	14.6	7.0	7.0	23.0	24.0
AST8-R3/8	8	R3/8	20.7	31.2	20.7	51.9	30.0	12.0	16	17.0×18.5	14.6	9.0	7.0	23.0	32.0
AST10-R1/8	10	R1/8	24.7	29.2	24.7	53.9	33.9	8.0	19	17.0×18.5	17.5	5.0	5.0	22.0	28.0
AST10-R1/4	10	R1/4	24.7	33.2	24.7	57.9	33.9	11.0	19	17.0×18.5	17.5	7.0	7.0	34.5	34.0
AST10-R3/8	10	R3/8	24.7	34.2	24.7	58.9	33.9	12.0	19	17.0×18.5	17.5	9.0	9.0	37.0	40.0
AST10-R1/2	10	R1/2	24.7	38.2	24.7	62.9	36.9	15.0	19	22.0×24.5	17.5	12.0	9.0	37.0	58.0
AST12-R1/4	12	R1/4	26.3	35.7	26.3	62.0	36.8	11.0	20	19.0×21.0	20.0	7.0	7.0	36.0	43.0
AST12-R3/8	12	R3/8	26.3	36.7	26.3	63.0	36.8	12.0	20	19.0×21.0	20.0	9.0	9.0	43.0	48.0
AST12-R1/2	12	R1/2	26.3	40.7	26.3	67.0	38.6	15.0	20	22.0×24.5	20.0	12.0	10.0	43.0	65.0
AST16-R3/8	16	R3/8	34.9	45.0	34.9	79.9	48.7	12.0	27	24.0×27.0	28.0	11.0	11.0	70.0	92.0
AST16-R1/2	16	R1/2	34.9	48.0	34.9	82.9	48.7	15.0	27	24.0×27.0	28.0	12.0	12.0	93.0	106.0

Tube

Clean tube

Processed tube

PushOne fitting

QuickSeal fitting

Clean fitting/ Chemfit

Bamboo-shoot fitting

Control switch/ Detachable series

Jig/Tool/ Accessory

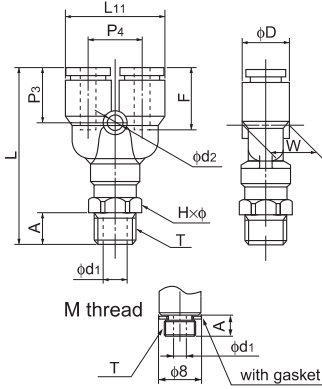
Technical information

Reference



## Y joint

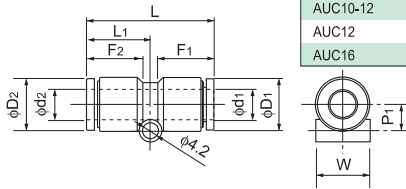
### ●Millimeter size type



Product number	Applicable tube outer diameter (mm)	T Thread size (M,R)	L (mm)	L11 (mm)	A (mm)	F Tube insertion length (mm)	H×φ Width across flat (mm)	P3 (mm)	P4 (mm)	W (mm)	D (mm)	d1 (mm)	d2 (mm)	Min. inner diameter (mm)	Effective cross-sectional area (mm <sup>2</sup> )	Weight (g)
AY4-M5	4	M5×0.8	37.9	20.8	4.0	13	10.0×11.0	13.5	11.0	9.8	9.8	2.0	3.2	2.0	2.5	9.0
AY4-R1/8	4	R1/8	40.4	20.8	8.0	13	10.0×11.0	13.5	11.0	9.8	9.8	5.0	3.2	3.0	3.5	11.0
AY4-R1/4	4	R1/4	44.4	20.8	11.0	13	14.0×15.4	13.5	11.0	9.8	9.8	7.0	3.2	3.0	3.5	18.0
AY6-M5	6	M5×0.8	41.3	24.8	4.0	15	12.0×13.0	14.7	12.2	12.6	12.6	2.0	4.2	2.0	2.5	13.0
AY6-R1/8	6	R1/8	43.8	24.8	8.0	15	12.0×13.0	14.7	12.2	12.6	12.6	5.0	4.2	5.0	9.0	15.0
AY6-R1/4	6	R1/4	47.8	24.8	11.0	15	14.0×15.4	14.7	12.2	12.6	12.6	7.0	4.2	5.0	9.0	22.0
AY6-R3/8	6	R3/8	48.8	24.8	12.0	15	17.0×18.5	14.7	12.2	12.6	12.6	9.0	4.2	5.0	9.0	30.0
AY8-R1/8	8	R1/8	46.9	28.8	8.0	16	14.0×15.4	16.4	14.2	14.6	14.6	5.0	4.2	5.0	17.5	20.0
AY8-R1/4	8	R1/4	50.9	28.8	11.0	16	14.0×15.4	16.4	14.2	14.6	14.6	7.0	4.2	7.0	20.0	25.0
AY8-R3/8	8	R3/8	51.9	28.8	12.0	16	17.0×18.5	16.4	14.2	14.6	14.6	9.0	4.2	7.0	20.0	33.0
AY10-R1/4	10	R1/4	55.9	35.0	11.0	19	17.0×18.5	18.4	17.5	17.5	17.5	7.0	4.2	7.0	27.5	33.0
AY10-R3/8	10	R3/8	56.9	35.0	12.0	19	17.0×18.5	18.4	17.5	17.5	17.5	9.0	4.2	9.0	28.0	41.0
AY10-R1/2	10	R1/2	60.9	35.0	15.0	19	22.0×24.5	18.4	17.5	17.5	17.5	12.0	4.2	9.0	28.0	60.0
AY12-R1/4	12	R1/4	60.8	40.0	11.0	20	19.0×21.0	20.3	20.0	20.0	20.0	7.0	4.2	7.0	34.5	47.0
AY12-R3/8	12	R3/8	61.8	40.0	12.0	20	19.0×21.0	20.3	20.0	20.0	20.0	9.0	4.2	9.0	40.0	52.0
AY12-R1/2	12	R1/2	65.8	40.0	15.0	20	22.0×24.5	20.3	20.0	20.0	20.0	12.0	4.2	10.0	40.0	70.0
AY16-R3/8	16	R3/8	78.6	55.0	12.0	27	24.0×27.0	26.6	27.5	27.5	28.0	11.0	4.2	11.0	70.0	103.0
AY16-R1/2	16	R1/2	81.6	55.0	15.0	27	24.0×27.0	26.6	27.5	27.5	28.0	12.0	4.2	12.0	71.0	117.0

## Union connector

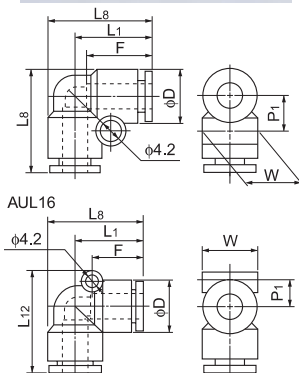
### ●Millimeter size type



Product number	d1 Applicable tube outer diameter (mm)	d2 Applicable tube outer diameter (mm)	L (mm)	L1 (mm)	P1 (mm)	F1 Tube insertion length (mm)	F2 Tube insertion length (mm)	D1 (mm)	D2 (mm)	W (mm)	Min. inner diameter (mm)	Effective cross-sectional area (mm <sup>2</sup> )	Weight (g)
AUC4	4	4	31.8	15.9	5.0	13	13	9.8	9.8	9.7	4.0	3.5	4.0
AUC4-6	4	6	32.7	16.8	6.0	13	15	9.8	12.6	12.5	3.0	3.5	5.0
AUC6	6	6	33.6	16.8	6.0	15	15	12.6	12.6	12.5	6.0	12.5	6.0
AUC6-8	6	8	34.7	17.9	7.0	15	16	12.6	14.6	14.5	5.0	11.5	7.0
AUC8	8	8	35.8	17.9	7.0	16	16	14.6	14.6	14.5	8.0	28.0	8.0
AUC8-10	8	10	38.8	20.9	8.5	16	19	14.6	17.5	17.5	7.0	31.5	11.0
AUC10	10	10	41.7	20.9	8.5	19	19	17.5	17.5	17.5	14.0	45.0	14.0
AUC10-12	10	12	42.7	21.8	9.8	19	20	17.5	20.0	20.0	9.0	53.0	17.0
AUC12	12	12	43.6	21.8	9.8	20	27	20.0	20.0	20.0	19.0	67.0	19.0
AUC16	16	16	56.2	28.1	13.8	27	27	28.0	28.0	27.5	48.0	110.0	48.0

## 90 degree union elbow

### ●Millimeter size type



Product number	Applicable tube outer diameter (mm)	L1 (mm)	L8 (mm)	P1 (mm)	F Tube insertion length (mm)	D (mm)	W (mm)	Min. inner diameter (mm)	Effective cross-sectional area (mm <sup>2</sup> )	Weight (g)
AUL4	4	17.2	22.1	6.9	13	9.8	9.7	3.0	3.5	4.0
AUL6	6	18.5	24.8	8.3	15	12.6	12.5	5.0	9.5	6.0
AUL8	8	20.7	28.0	9.3	16	14.6	14.5	7.0	19.5	9.0
AUL10	10	24.7	33.4	10.8	19	17.5	17.5	9.0	32.5	15.0
AUL12	12	26.3	36.3	12.1	20	20.0	20.0	11.0	45.5	20.0

Product number	Applicable tube outer diameter (mm)	L1 (mm)	L8 (mm)	L12 (mm)	P1 (mm)	F Tube insertion length (mm)	D (mm)	W (mm)	Min. inner diameter (mm)	Effective cross-sectional area (mm <sup>2</sup> )	Weight (g)
*AUL16	16	34.9	48.7	50.8	12.9	27	28.0	28.0	13.0	97.5	50.0

\*AUL16 has a different screw hole position.

Tube

Clean tube

Processed tube

PushOne fitting

QuickSeal fitting

Clean fitting/ Chemifit

Bamboo-shoot fitting

Control switch/ Detachable series

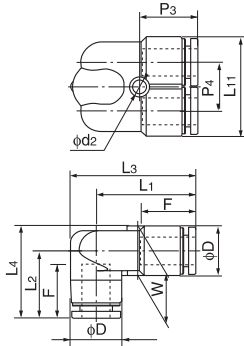
Jig/Tool/ Accessory

Technical information

Reference

## 90 degree branch elbow

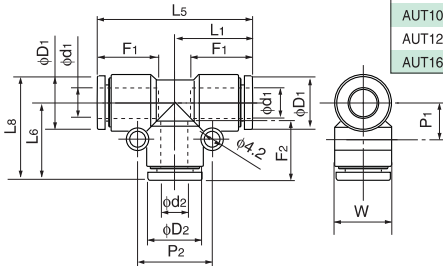
### ●Millimeter size type



Product number	Applicable tube outer diameter (mm)	L1 (mm)	L2 (mm)	L3 (mm)	L4 (mm)	L11 (mm)	F Tube insertion length (mm)	P3 (mm)	P4 (mm)	W (mm)	D (mm)	d2 (mm)	Min. inner diameter (mm)	Effective cross-sectional area (mm <sup>2</sup> )	Weight (g)
AULY6	6	25.6	18.0	31.9	24.3	24.8	15	14.8	12.2	12.6	12.6	4.2	5.0	—	10.0
AULY8	8	28.2	19.6	35.5	26.9	28.8	16	16.4	14.2	14.6	14.6	4.2	7.0	—	14.0
AULY10	10	31.3	22.6	40.0	31.3	35.0	19	18.4	17.5	17.5	17.5	4.2	9.0	—	23.0

## Union tee

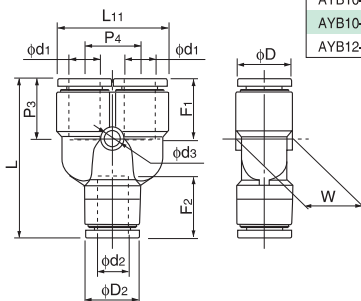
### ●Millimeter size type



Product number	d1 Applicable tube outer diameter (mm)	d2 Applicable tube outer diameter (mm)	L1 (mm)	L5 (mm)	L6 (mm)	L8 (mm)	F1 Tube insertion length (mm)	F2 Tube insertion length (mm)	P1 (mm)	P2 (mm)	D1 (mm)	D2 (mm)	W (mm)	Min. inner diameter (mm)	Effective cross-sectional area (mm <sup>2</sup> )	Weight (g)
AUT4	4	4	17.2	34.4	17.2	22.1	13	13	6.9	14.0	9.8	9.8	9.7	3.0	3.5	6.0
AUT4-6	4	6	17.7	35.4	18.0	22.9	13	15	6.8	17.0	9.8	12.6	12.5	3.0	2.5	8.0
AUT6	6	6	18.5	37.0	18.5	24.8	15	15	8.3	17.0	12.6	12.6	12.5	5.0	4.5	9.0
AUT6-8	6	8	19.5	39.0	20.4	26.7	15	16	8.2	19.0	12.6	14.6	14.5	5.0	15.5	11.0
AUT8	8	8	20.7	41.4	20.7	28.0	16	16	9.3	19.0	14.6	14.6	14.5	7.0	19.5	13.0
AUT8-10	8	10	21.7	43.4	24.4	31.7	16	19	9.2	22.0	14.6	17.5	17.5	7.0	21.0	18.0
AUT10	10	10	24.7	49.3	24.7	33.4	19	19	10.8	22.0	17.5	17.5	17.5	9.0	32.5	22.0
AUT10-12	10	12	25.6	51.1	26.3	35.1	19	20	10.8	24.0	17.5	20.0	20.0	9.0	27.0	26.0
AUT12	12	12	26.3	52.6	26.3	36.3	20	20	12.1	24.0	20.0	20.0	20.0	11.0	45.5	29.0
AUT16	16	16	34.9	69.8	34.9	48.7	27	27	15.9	31.7	28.0	28.0	27.5	13.0	97.0	73.0

## Y union

### ●Millimeter size type



Product number	d1 Applicable tube outer diameter (mm)	d2 Applicable tube outer diameter (mm)	L (mm)	L11 (mm)	F1 Tube insertion length (mm)	F2 Tube insertion length (mm)	P3 (mm)	P4 (mm)	W (mm)	D1 (mm)	D2 (mm)	d3 (mm)	Min. inner diameter (mm)	Effective cross-sectional area (mm <sup>2</sup> )	Weight (g)
AYB4-4	4	4	33.8	20.8	13	13	13.5	11.0	9.8	9.8	9.8	3.2	3.0	3.0	6.0
AYB4-6	4	6	34.2	20.8	13	15	13.5	11.0	12.5	9.8	12.6	3.2	3.0	2.5	8.0
AYB6-6	6	6	37.5	24.8	15	15	14.7	12.2	12.5	12.6	12.6	4.2	5.0	8.0	10.0
AYB6-8	6	8	39.2	24.8	15	16	14.7	12.2	14.5	12.5	14.6	4.2	5.0	17.0	12.0
AYB8-8	8	8	42.9	28.8	16	16	16.4	14.2	14.6	14.6	14.6	4.2	7.0	18.0	14.0
AYB8-10	8	10	44.8	28.8	16	19	16.4	14.2	17.5	14.6	17.5	4.2	7.0	22.5	19.0
AYB10-10	10	10	48.3	35.0	19	19	18.4	17.5	17.5	17.5	17.5	4.2	9.0	27.0	24.0
AYB10-12	10	12	49.4	35.0	19	20	18.4	17.5	20.0	17.5	20.0	4.2	9.0	30.0	29.0
AYB12-12	12	12	54.0	40.0	20	20	20.3	20.0	20.0	20.0	20.0	4.2	11.0	38.5	33.0

Tube

Clean tube

Processed tube

PushOne fitting

QuickSeal fitting

Clean fitting/ Chemifit

Bamboo-shoot fitting

Control switch/ Detachable series

Jig/Tool/ Accessory

Technical information

Reference

Double Y union

Tube

Clean tube

Processed tube

PushOne fitting

QuickSeal fitting

Clean fitting/Chemifit

Bamboo-shoot fitting

Control switch/Detachable series

Jig/Tool/Accessory

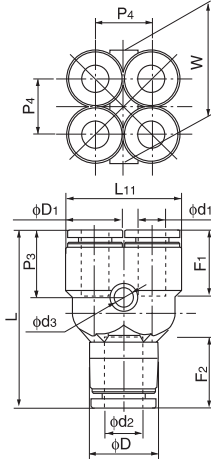
Technical information

Reference



●Millimeter size type

Product number	d1 Applicable tube outer diameter (mm)	d2 Applicable tube outer diameter (mm)	L (mm)	L11 (mm)	F1 Tube insertion length (mm)	F2 Tube insertion length (mm)	P3 (mm)	P4 (mm)	W (mm)	D1 (mm)	D (mm)	d3 (mm)	Min. inner diameter (mm)	Effective cross- sectional area (mm <sup>2</sup> )	Weight (g)
AUWY4-6	4	6	34.2	19.8	13	15	13.4	10.0	19.8	9.8	12.6	3.2	3.5	—	10.0
AUWY6-8	6	8	39.2	24.8	15	16	14.8	12.2	24.8	12.6	14.6	4.2	5.0	—	16.0

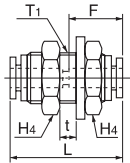


Panel touch connector



●Millimeter size type

Product number	Applicable tube outer diameter (mm)	L (mm)	F Tube insertion length (mm)	t Max. panel thickness (mm)	H4 (mm)	T1 Recommended panel hole diameter (mm)	Washer outer diameter (mm)	Washer thickness (mm)	Thread length (mm)	Min. inner diameter (mm)	Effective cross- sectional area (mm <sup>2</sup> )	Weight (g)
APC4	4	31.8	13	8.0	17.0	13	20	2.0	20	3.0	3.5	5.0
APC6	6	33.6	15	9.5	19.0	15	24	2.5	22	5.0	12.5	7.0
APC8	8	35.8	16	10.5	22.0	17	28	2.5	23	7.0	28.0	9.0
APC10	10	41.7	19	14.0	27.0	21	34	3.0	27	9.0	45.0	16.0
APC12	12	43.6	20	16.0	30.0	23	37	3.0	29	11.0	67.0	67.0

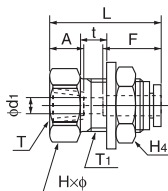


Internal panel touch connector



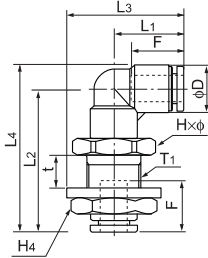
●Millimeter size type

Product number	Applicable tube outer diameter (mm)	T Thread size (Rc)	L (mm)	A (mm)	F Tube insertion length (mm)	H×φ Width across flat (mm)	H4 (mm)	t Max. panel thickness (mm)	T1 Recommended panel hole diameter (mm)	d1 (mm)	Washer outer diameter (mm)	Washer thickness (mm)	Min. inner diameter (mm)	Effective cross- sectional area (mm <sup>2</sup> )	Weight (g)
APFC4-R1/8	4	Rc1/8	27.9	8.7	13	17.0×18.5	17.0	8.0	13	3.0	20	2.0	3.0	4.0	22.0
APFC6-R1/8	6	Rc1/8	29.8	8.7	15	19.0×21.0	19.0	9.0	15	5.0	24	2.5	5.0	10.5	44.0
APFC6-R1/4	6	Rc1/4	35.3	13.0	15	19.0×21.0	19.0	9.0	15	5.0	24	2.5	5.0	10.5	50.0
APFC8-R1/4	8	Rc1/4	34.4	13.0	16	22.0×24.5	22.0	10.5	17	7.0	28	2.5	7.0	25.0	64.0
APFC8-R3/8	8	Rc3/8	38.4	13.5	16	22.0×24.5	22.0	10.5	17	7.0	28	2.5	7.0	26.0	68.0
APFC10-R1/4	10	Rc1/4	40.4	13.0	19	27.0×30.0	27.0	14.0	21	9.0	34	3.0	9.0	40.0	117.0
APFC10-R3/8	10	Rc3/8	40.4	13.5	19	27.0×30.0	27.0	14.0	21	9.0	34	3.0	9.0	40.0	107.0
APFC12-R1/4	12	Rc1/4	42.3	13.0	20	30.0×33.5	30.0	16.0	23	10.5	37	3.0	10.5	45.0	147.0
APFC12-R3/8	12	Rc3/8	42.3	13.5	20	30.0×33.5	30.0	16.0	23	11.0	37	3.0	11.0	50.0	138.0



## 90 degree panel touch elbow

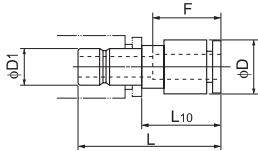
### ●Millimeter size type



Product number	Applicable tube outer diameter (mm)	L1 (mm)	L2 (mm)	L3 (mm)	L4 (mm)	F Tube insertion length (mm)	Hxφ Width across flat (mm)	H4 Width across flat (mm)	t Max. panel thickness (mm)	T1 Recommended panel hole diameter (mm)	D (mm)	Washer outer diameter (mm)	Washer thickness (mm)	Min. inner diameter (mm)	Effective cross-sectional area (mm <sup>2</sup> )	Weight (g)
APL4	4	17.2	35.6	27.7	40.5	13	17.0-18.3	17.0	7.5	13	9.8	21	2.5	3.0	—	32.0
APL6	6	18.5	40.0	30.5	46.3	15	19.0-21.0	19.0	9.0	15	12.6	24	2.5	5.0	—	43.0
APL8	8	20.7	43.6	34.7	47.5	16	22.0-24.5	22.0	10.0	17	14.6	28	3.0	7.0	—	62.0
APL10	10	24.7	51.6	41.7	60.3	19	27.0-30.0	27.0	14.0	21	17.5	34	3.0	9.0	—	101.0
APL12	12	26.3	56.0	44.8	66.0	20	30.0-33.5	30.0	16.0	23	20.0	37	3.0	10.0	—	126.0

## Reducer

### ●Millimeter size type

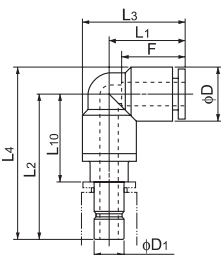


Product number	Applicable tube outer diameter (mm)	D1 Insertion part diameter (mm)	L (mm)	L10 (mm)	F Tube insertion length (mm)	D (mm)	Min. inner diameter (mm)	Effective cross-sectional area (mm <sup>2</sup> )	Weight (g)
AR4-6	4	6	30.4	13.9	13	10.0	3.0	3.5	8.0
AR4-8	4	8	30.9	13.9	13	10.0	3.0	3.5	11.0
AR6-8	6	8	31.8	14.8	15	12.0	5.0	10.5	11.0
AR6-10	6	10	34.3	15.8	15	12.0	5.0	10.5	17.0
AR6-12	6	12	35.8	15.8	15	13.0	5.0	10.5	25.0
AR8-10	8	10	34.9	16.4	16	13.9	7.0	28.0	15.0
AR8-12	8	12	36.4	16.4	16	13.9	7.0	28.0	22.0
AR10-12	10	12	41.4	21.4	19	16.9	7.0	45.0	23.0

⚠ Caution: Once a reducer is inserted into a PushOne part, the part cannot be used to connect a tube.

## Adopter elbow

### ●Millimeter size type



Product number	Applicable tube outer diameter (mm)	D1 Insertion part diameter (mm)	L1 (mm)	L2 (mm)	L3 (mm)	L4 (mm)	L10 (mm)	F Tube insertion length (mm)	D (mm)	Min. inner diameter (mm)	Effective cross-sectional area (mm <sup>2</sup> )	Weight (g)
AAL4	4	4	17.2	30.7	22.1	35.6	14.7	13	9.8	3.0	4.0	6.0
AAL6	6	6	18.5	34.2	24.4	40.5	17.7	15	12.6	4.5	12.0	10.0
AAL8	8	8	20.7	35.7	27.6	43.0	18.7	16	14.6	6.0	20.0	14.0
AAL10	10	10	24.7	41.2	33.0	50.0	22.7	19	17.5	8.0	35.0	22.0
AAL12	12	12	26.3	45.2	35.7	55.2	25.2	20	20.0	10.0	43.0	30.0

⚠ Caution: Once an adopter elbow is inserted into a PushOne part, the part cannot be used to connect a tube.

Tube

Clean tube

Processed tube

PushOne fitting

QuickSeal fitting

Clean fitting/ Chemifit

Bamboo-shoot fitting

Control switch/ Detachable series

Jig/Tool/ Accessory

Technical information

Reference

Tube

Clean tube

Processed tube

PushOne fitting

QuickSeal fitting

Clean fitting/ Chemifit

Bamboo-shoot fitting

Control switch/ Detachable series

Jig/Tool/ Accessory

Technical information

Reference

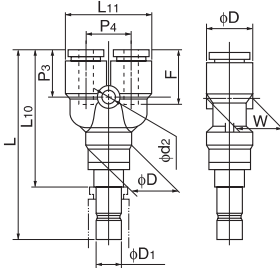
Y plug

●Millimeter size type



Product number	Applicable tube outer diameter (mm)	D1 Insertion part diameter (mm)	L (mm)	L10 (mm)	L11 (mm)	F Tube insertion length (mm)	P3 (mm)	P4 (mm)	W (mm)	D (mm)	d2 (mm)	Min. inner diameter (mm)	Effective cross-sectional area (mm <sup>2</sup> )	Weight (g)
AYA4-4	4	4	48.4	32.4	20.8	13	13.5	11.0	9.8	9.8	3.2	3.0	3.5	8.0
AYA6-6	6	6	52.8	36.3	24.8	15	14.7	12.2	12.6	12.6	4.2	4.5	9.0	14.0
AYA8-8	8	8	56.4	39.4	28.8	16	16.4	14.2	14.6	14.6	4.2	6.0	18.0	19.0
AYA10-10	10	10	63.9	45.4	35.0	19	18.4	17.5	17.5	17.5	4.2	8.0	28.0	31.0
AYA12-12	12	12	70.3	50.3	40.0	20	20.3	20.0	20.0	20.0	4.2	10.0	40.0	42.0

⚠ Caution: Once a Y plug elbow is inserted into a PushOne part, the part cannot be used to connect a tube.

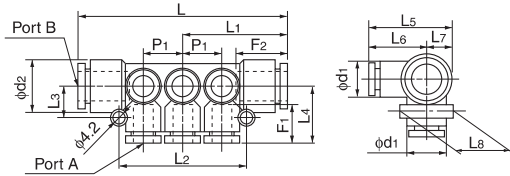


Manifold A type

●Millimeter size type



Product number	Applicable tube outer diameter (mm)		A Number of ports	L (mm)	L1 (mm)	L2 (mm)	L3 (mm)	L4 (mm)	L5 (mm)	L6 (mm)	L7 (mm)	L8 (mm)	F1 Tube insertion length (mm)	F2 Tube insertion length (mm)	P1 (mm)	d1 (mm)	d2 (mm)	Effective cross-sectional area (mm <sup>2</sup> )	Weight (g)
	Port A	Port B																	
AMA4-8-6	4	8	6	61.0	30.5	36.0	10.0	18.2	27.5	18.2	9.3	18.5	13	16	10.6	9.7	14.5	—	20.0
AMA4-8-10	4	8	10	82.2	41.1	57.2	10.0	18.2	27.5	18.2	9.3	18.5	13	16	10.6	9.7	14.5	—	33.0
AMA6-10-6	6	10	6	73.7	36.9	44.0	11.5	20.2	29.5	20.2	9.3	18.5	15	19	13.0	12.5	17.5	—	37.0
AMA6-10-10	6	10	10	99.7	49.9	70.0	11.5	20.2	29.5	20.2	9.3	18.5	15	19	13.0	12.5	17.5	—	54.0
AMA8-12-6	8	12	6	83.2	41.6	51.0	12.5	22.1	32.6	22.1	10.5	21.0	16	20	15.5	14.5	20.0	—	50.0
AMA8-12-10	8	12	10	114.2	57.1	82.0	12.5	22.1	32.6	22.1	10.5	21.0	16	20	15.5	14.5	20.0	—	68.0

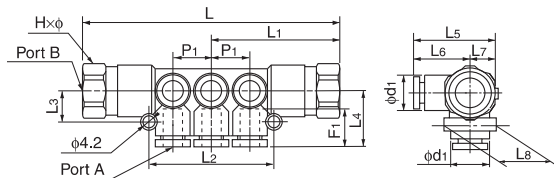


Manifold B type

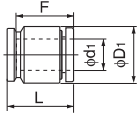
●Millimeter size type



Product number	Applicable tube outer diameter (mm)		Thread size (Rc)	A Number of ports	L (mm)	L1 (mm)	L2 (mm)	L3 (mm)	L4 (mm)	L5 (mm)	L6 (mm)	L7 (mm)	L8 (mm)	F1 Tube insertion length (mm)	P1 (mm)	d1 (mm)	H×ϕ Width across flat (mm)	Effective cross-sectional area (mm <sup>2</sup> )	Weight (g)
	Port A	Port B																	
AMB4-1/4-6	4	Rc1/4	6	84.0	42.0	36.0	10.0	18.2	27.5	18.2	9.3	18.5	13	10.6	9.7	17.0×18.5	—	58.0	
AMB4-1/4-10	4	Rc1/4	10	105.2	52.6	57.2	10.0	18.2	27.5	18.2	9.3	18.5	13	10.6	9.7	17.0×18.5	—	67.0	
AMB6-1/4-6	6	Rc1/4	6	96.4	48.2	44.0	11.5	20.2	29.5	20.2	9.3	18.5	15	13.0	12.5	17.0×18.5	—	79.0	
AMB6-1/4-10	6	Rc1/4	10	122.4	61.2	70.0	11.5	20.2	29.5	20.2	9.3	18.5	15	13.0	12.5	17.0×18.5	—	96.0	
AMB8-3/8-6	8	Rc3/8	6	105.6	52.8	51.0	12.5	22.1	32.6	22.1	10.5	21.0	16	15.5	14.5	19.0×21.0	—	92.0	
AMB8-3/8-10	8	Rc3/8	10	136.6	68.3	82.0	12.5	22.1	32.6	22.1	10.5	21.0	16	15.5	14.5	19.0×21.0	—	117.0	



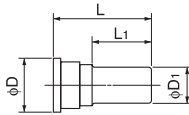
## Tube cap



### ●Millimeter size type

Product number	d <sub>1</sub> Applicable tube outer diameter (mm)	D <sub>1</sub> (mm)	F Tube insertion length (mm)	L (mm)	Weight (g)
ACC4	4	9.8	13	15.0	2.0
ACC6	6	12.6	15	16.9	3.0
ACC8	8	14.6	16	17.9	4.0
ACC10	10	17.5	19	21.7	6.0
ACC12	12	20.0	20	22.6	8.0

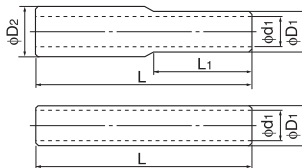
## Blank plug



### ●Millimeter size type

Product number	D <sub>1</sub> Insertion part diameter (mm)	L (mm)	L <sub>1</sub> (mm)	D (mm)	Weight (g)
BC4	4	28.0	15.5	7.7	0.75
BC6	6	28.0	16.0	9.7	1.2
BC8	8	29.0	16.0	11.7	1.7
BC10	10	32.0	17.7	14.0	2.5
BC12	12	34.0	20.4	16.0	3.8

## Nipple



### ●Millimeter size type

Product number	D <sub>1</sub> Insertion part diameter (mm)	D <sub>2</sub> Insertion part diameter (mm)	d <sub>1</sub> (mm)	L (mm)	L <sub>1</sub> (mm)	Weight (g)
EN4	4	—	2.5	37.0	—	1.0
EN4-6	4	6	2.5	38.0	18.5	1.0
EN6	6	—	4.0	39.0	—	1.0
EN6-8	8	6	4.0	41.0	19.5	1.0
EN8	8	—	6.0	43.0	—	1.0
EN8-10	8	10	6.0	46.0	21.5	2.0
EN10	10	—	7.5	49.0	—	2.0
EN10-12	10	12	7.5	50.5	24.5	3.0
EN12	12	—	9.0	52.0	—	3.0

Tube

Clean tube

Processed tube

PushOne fitting

QuickSeal fitting

Clean fitting/ Chemifit

Bamboo-shoot fitting

Control switch/ Detachable series

Jig/Tool/ Accessory

Technical information

Reference

# PushOne® E Series

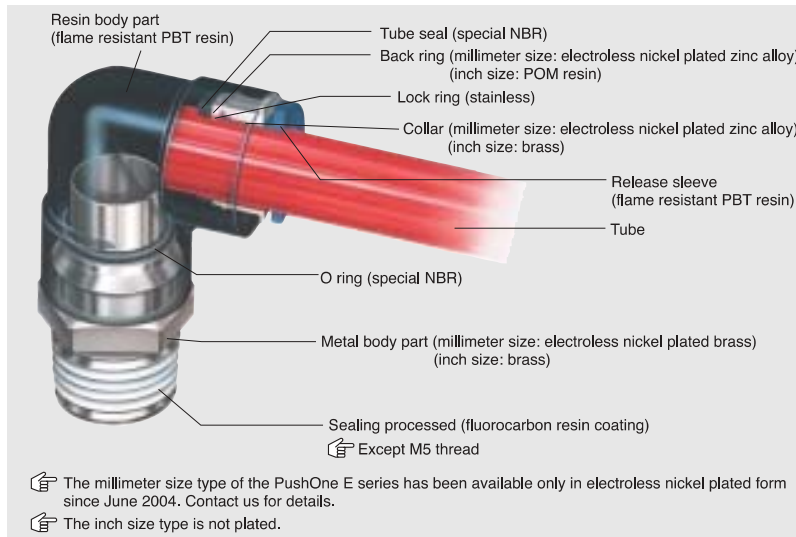
PushOne® fittings for general air pressure (flame resistant)

## Features

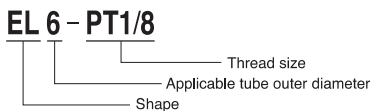
- **PushOne® connection of tube**  
The tubes can be connected without using a jig or tools
- **Electroless nickel plated**  
Preventing degradation of surface and dissolution of copper ions in fluid
- **Flame-resistant resin (compliant V-0 of UL94 standard)**  
Made of flame-resistant resin PBT. High self-extinguishing performance is compliant with V-0 of UL94 standard. Usable under an environment with spatters.
- **Sealing-processed R thread.**  
Sealing tape is not required.



## Cross-sectional structure diagram



## Product number example



## Distinction of millimeter/inch sizes



## Operating fluid, working temperature range

Operating fluid	Working temperature range
Air	-20°C~+80°C
Water	0°C~+40°C

ⓘ See "Combination List of Tube and Fitting" on page 8.

## Pressure condition







**Maximum working pressure:** 1.0MPa  
**Negative pressure performance:** -99.975kPa

## Handling instructions

- ⚠ **Caution** When the working conditions of tubes and fittings differ, use them under the lower specified conditions.
- ⚠ **Caution** When water is used as the operating fluid, confirm that there is no water leakage damage to equipment and instruments due to construction failure.
- ⚠ **Caution** When water is used as the operating fluid, do not allow it to freeze.
- ⚠ **Caution** Do not bend the pipe sharply near the tube insertion port of the fitting. Keep the tube straight for twice as long as the tube diameter from the insertion port.

ⓘ See page 34 for the common handling instructions for tube fittings.

## Applicable tube


Polyurethane tube	Nylon tube	Flame-resistant tube	Antistatic tube	Polyolefine resin tube	Fluorocarbon resin tube
					
U2***P.12 U1***P.13 U5***P.14	N2***P.15 N5***P.16 N1***P.17	FS***P.20 FW***P.21 FWU***P.22	UE***P.23	PL***P.26 PN***P.27	TA***P.28 TP***P.29

(\*1) When the PushOne E series is used with a UE tube, choose a metal body type including a connector and a hexagonal socket to maintain conductivity between the tube and the fittings.  
(\*2) Combinatory use of PL, PN, TA or TP tube and PushOne E series mixes general and clean type performances. When using them in a clean environment, pay attention to the clean level that could be lowered.

## Reference

Instruction manual	P.178
UL-94 standard flame test	P.204
Effective cross-sectional area	P.176
Negative-pressure performance list	P.177

## Allied products and product introduction

Speed controller	Ball valve	Miniature valve	Valve built-in connector	Q.D.C 101 series	Spatter cap
					
P.144	P.151	P.156	P.159	P.160	P.169

# PushOne® E Series

## Shape list



- Tube
- Clean tube
- Processed tube
- PushOne fitting**
- QuickSeal fitting
- Clean fitting/ Chemifit
- Bamboo-shoot fitting
- Control switch/ Detachable series
- Jig/Tool/ Accessory
- Technical information
- Reference



Connector

Tube

Clean tube

Processed tube

PushOne fitting

QuickSeal fitting

Clean fitting/ Chemifit

Bamboo-shoot fitting

Control switch/ Detachable series

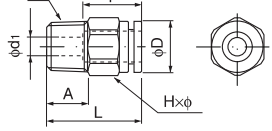
Jig/Tool/ Accessory

Technical information

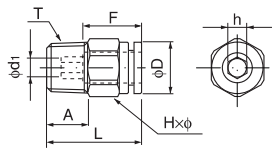
Reference



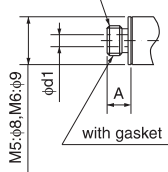
Millimeter size type



Inch size type



M thread



●Millimeter size type

Product number	Applicable tube outer diameter (mm)	T Thread size (M,R)	L (mm)	A (mm)	F Tube insertion length (mm)	Hxφ Width across flat (mm)	D (mm)	d1 (mm)	Effective cross-sectional area (mm <sup>2</sup> )	Weight (g)
EC4-M5	4	M5x0.8	22.4	4.0	13	10.0x11.0	9.6	2.0	3.0	6.0
EC4-PT1/8	4	R1/8	19.4	8.0	13	10.0x11.0	9.6	2.5	4.0	7.0
EC4-PT1/4	4	R1/4	22.4	11.0	13	14.0x15.4	9.6	2.5	4.0	17.0
EC6-M5	6	M5x0.8	24.2	4.0	15	12.0x13.0	11.7	2.0	3.5	9.0
EC6-M6	6	M6x1.0	25.2	5.0	15	12.0x13.0	11.7	3.0	4.5	10.0
EC6-PT1/8	6	R1/8	21.2	8.0	15	12.0x13.0	11.7	4.0	10.5	9.0
EC6-PT1/4	6	R1/4	24.2	11.0	15	14.0x15.4	11.7	4.0	10.5	18.0
EC6-PT3/8	6	R3/8	25.2	12.0	15	17.0x18.5	11.7	4.0	10.5	32.0
EC8-PT1/8	8	R1/8	26.2	8.0	16	14.0x15.4	13.7	5.0	20.0	14.0
EC8-PT1/4	8	R1/4	25.2	11.0	16	14.0x15.4	13.7	6.0	25.0	16.0
EC8-PT3/8	8	R3/8	26.2	12.0	16	17.0x18.5	13.7	6.0	26.0	29.0
EC10-PT1/8	10	R1/8	30.1	8.0	19	17.0x18.5	16.7	5.0	25.0	24.0
EC10-PT1/4	10	R1/4	28.1	11.0	19	17.0x18.5	16.7	8.0	40.0	21.0
EC10-PT3/8	10	R3/8	29.1	12.0	19	17.0x18.5	16.7	8.0	40.0	29.0
EC10-PT1/2	10	R1/2	32.1	15.0	19	22.0x24.5	16.7	8.0	40.0	61.0
EC12-PT1/4	12	R1/4	34.0	11.0	20	19.0x21.0	18.6	8.0	45.0	32.0
EC12-PT3/8	12	R3/8	30.0	12.0	20	19.0x21.0	18.6	10.0	50.0	31.0
EC12-PT1/2	12	R1/2	33.0	15.0	20	22.0x24.5	18.6	10.0	50.0	58.0
EC16-PT3/8	16	R3/8	41.6	12.0	27	24.0x26.5	24.5	10.0	77.0	68.0
EC16-PT1/2	16	R1/2	43.6	15.0	27	24.0x26.5	24.5	12.0	110.5	83.0

\*Made to order

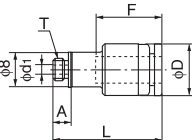
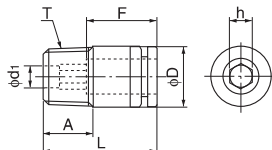
●Inch size type

Product number	Applicable tube outer diameter (inch)	T Thread size (M,R)	L (mm)	A (mm)	F Tube insertion length (mm)	Hxφ Width across flat (mm)	h Width across flat (mm)	D (mm)	d1 (mm)	Effective cross-sectional area (mm <sup>2</sup> )	Weight (g)
EC1/4-M5	1/4	M5x0.8	24.4	4.0	15	12.0x13.0	4.0	12.0	2.0	3.5	9.0
EC1/4-PT1/8	1/4	R1/8	21.4	8.0	15	12.0x13.0	4.0	12.0	4.0	12.0	9.0
EC1/4-PT1/4	1/4	R1/4	24.4	11.0	15	14.0x15.4	4.0	12.0	4.0	12.0	18.0
EC1/4-PT3/8	1/4	R3/8	25.4	12.0	15	17.0x18.5	4.0	12.0	4.0	12.0	32.0
EC5/16-PT1/8	5/16	R1/8	25.9	8.0	16	14.0x15.4	5.0	13.9	5.0	20.0	14.0
EC5/16-PT1/4	5/16	R1/4	24.9	11.0	16	14.0x15.4	6.0	13.9	6.0	25.0	16.0
EC5/16-PT3/8	5/16	R3/8	25.9	12.0	16	17.0x18.5	6.0	13.9	6.0	26.0	29.0
EC3/8-PT1/8	3/8	R1/8	29.7	8.0	19	17.0x18.5	—	16.9	5.0	20.0	24.0
EC3/8-PT1/4	3/8	R1/4	27.7	11.0	19	17.0x18.5	—	16.9	8.0	35.0	21.0
EC3/8-PT3/8	3/8	R3/8	28.7	12.0	19	17.0x18.5	—	16.9	8.0	35.0	29.0
EC3/8-PT1/2	3/8	R1/2	31.7	15.0	19	22.0x24.5	—	16.9	8.0	35.0	61.0
EC1/2-PT1/4	1/2	R1/4	34.0	11.0	21	19.0x21.0	—	19.0	8.0	48.0	32.0
EC1/2-PT3/8	1/2	R3/8	30.0	12.0	21	19.0x21.0	—	19.0	10.0	66.5	31.0
EC1/2-PT1/2	1/2	R1/2	33.0	15.0	21	22.0x24.5	—	19.0	10.0	66.5	58.0

☞ The inch size type is not plated.

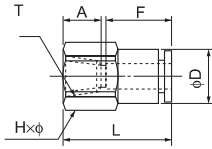
Hexagon socket connector

●Millimeter size type



Product number	Applicable tube outer diameter (mm)	T Thread size (M,R)	L (mm)	A (mm)	F Tube insertion length (mm)	h Width across flat (mm)	D (mm)	d1 (mm)	Effective cross-sectional area (mm <sup>2</sup> )	Weight (g)
EC4-M5A	4	M5x0.8	19.4	4.0	13	2.0	9.8	2.0	—	5.0
EC4-PT1/8A	4	R1/8	19.4	8.0	13	2.5	9.8	2.5	—	7.0
EC6-M5A	6	M5x0.8	24.2	4.0	15	4.0	11.8	2.0	—	18.0
EC6-PT1/8A	6	R1/8	21.2	8.0	15	4.0	11.8	4.0	—	8.0
EC6-PT1/4A	6	R1/4	24.2	11.0	15	4.0	13.8	4.0	—	17.0
EC8-PT1/8A	8	R1/8	26.2	8.0	16	5.0	13.8	5.0	—	12.0
EC8-PT1/4A	8	R1/4	25.2	11.0	16	5.0	13.8	5.0	—	15.0
EC10-PT1/4A	10	R1/4	28.1	11.0	19	6.0	16.8	6.0	—	19.0
EC10-PT3/8A	10	R3/8	29.1	12.0	19	6.0	16.8	6.0	—	28.0

Internal connector



● Millimeter size type

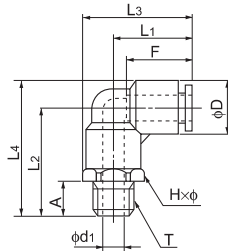
Product number	Applicable tube outer diameter (mm)	T Thread size (Rc)	L (mm)	A (mm)	F Tube insertion length (mm)	H×φ Width across flat (mm)	D (mm)	Min. inner diameter (mm)	Effective cross-sectional area (mm <sup>2</sup> )	Weight (g)
EFC4-PT1/8	4	Rc1/8	23.9	8.7	13	14.0×15.4	10.0	3.0	4.0	16.0
EFC6-PT1/8	6	Rc1/8	24.8	8.7	15	14.0×15.4	12.0	5.0	10.5	17.0
EFC6-PT1/4	6	Rc1/4	29.3	13.0	15	17.0×18.5	12.0	5.0	10.5	26.0
EFC8-PT1/4	8	Rc1/4	30.9	13.0	16	17.0×18.5	13.9	7.0	25.0	28.0
EFC8-PT3/8	8	Rc3/8	31.4	13.5	16	22.0×24.5	13.9	7.0	26.0	45.0
EFC10-PT1/4	10	Rc1/4	33.9	13.0	19	17.0×18.5	16.9	9.0	40.0	34.0
EFC10-PT3/8	10	Rc3/8	34.4	13.5	19	22.0×24.5	16.9	9.0	40.0	50.0
EFC10-PT1/2	10	Rc1/2	38.4	17.5	19	24.0×26.5	16.9	9.0	40.0	56.0
EFC12-PT1/4	12	Rc1/4	34.5	13.0	20	19.0×21.0	19.0	10.0	45.0	43.0
EFC12-PT3/8	12	Rc3/8	35.3	13.5	20	22.0×24.5	19.0	11.0	50.0	50.0
EFC12-PT1/2	12	Rc1/2	39.3	17.5	20	24.0×26.5	19.0	11.0	50.0	58.0

● Inch size type

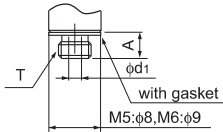
Product number	Applicable tube outer diameter (inch)	T Thread size (Rc)	L (mm)	A (mm)	F Tube insertion length (mm)	H×φ Width across flat (mm)	D (mm)	Min. inner diameter (mm)	Effective cross-sectional area (mm <sup>2</sup> )	Weight (g)
EFC1/4-PT1/8	1/4	Rc1/8	25.0	8.7	15	14.0×15.4	12.0	5.0	12.0	17.0
EFC1/4-PT1/4	1/4	Rc1/4	29.5	13.0	15	17.0×18.5	12.0	5.0	12.0	26.0
EFC5/16-PT1/4	5/16	Rc1/4	30.6	13.0	16	17.0×18.5	13.9	7.0	25.0	28.0
EFC5/16-PT3/8	5/16	Rc3/8	31.1	13.5	16	22.0×24.5	13.9	7.0	26.0	45.0
EFC3/8-PT1/4	3/8	Rc1/4	33.5	13.0	19	17.0×18.5	16.9	9.0	35.0	34.0
EFC3/8-PT3/8	3/8	Rc3/8	34.0	13.5	19	22.0×24.5	16.9	9.0	35.0	50.0
EFC3/8-PT1/2	3/8	Rc1/2	38.4	17.5	19	24.0×26.5	16.9	9.0	35.0	56.0
EFC1/2-PT1/4	1/2	Rc1/4	35.3	13.0	21	22.0×24.5	20.0	10.0	48.0	43.0
EFC1/2-PT3/8	1/2	Rc3/8	35.3	13.5	21	22.0×24.5	20.0	11.0	66.5	50.0
EFC1/2-PT1/2	1/2	Rc1/2	39.3	17.5	21	24.0×26.5	20.0	11.0	66.5	58.0

The inch size type is not plated.

90 degree elbow



M thread



● Millimeter size type

Product number	Applicable tube outer diameter (mm)	T Thread size (M,R)	L <sub>1</sub> (mm)	L <sub>2</sub> (mm)	L <sub>3</sub> (mm)	L <sub>4</sub> (mm)	A (mm)	F Tube insertion length (mm)	H×φ Width across flat (mm)	D (mm)	d <sub>1</sub> (mm)	Min. inner diameter (mm)	Effective cross-sectional area (mm <sup>2</sup> )	Weight (g)
EL4-M5	4	M5×0.8	17.2	20.2	22.7	25.1	4.0	13	10.0×11.0	9.8	2.0	2.0	3.0	7.0
EL4-PT1/8	4	R1/8	17.2	22.7	22.7	27.6	8.0	13	10.0×11.0	9.8	5.0	3.0	4.0	9.0
EL4-PT1/4	4	R1/4	17.2	26.7	24.9	31.6	11.0	13	14.0×15.4	9.8	7.0	3.0	4.0	16.0
EL6-M5	6	M5×0.8	18.5	22.7	25.0	29.0	4.0	15	12.0×13.0	12.6	2.0	2.0	3.5	10.0
EL6-M6	6	M6×1.0	18.5	22.7	25.0	29.0	5.0	15	12.0×13.0	12.6	3.0	3.0	4.5	11.0
EL6-PT1/8	6	R1/8	18.5	25.2	25.0	31.5	8.0	15	12.0×13.0	12.6	5.0	5.0	12.0	18.0
EL6-PT1/4	6	R1/4	18.5	29.2	26.2	35.5	11.0	15	14.0×15.4	12.6	7.0	5.0	12.0	18.0
EL6-PT3/8	6	R3/8	18.5	30.2	27.8	36.5	12.0	15	17.0×18.5	12.6	9.0	5.0	12.0	26.0
EL8-PT1/8	8	R1/8	20.7	26.2	28.4	33.5	8.0	16	14.0×15.4	14.5	5.0	5.0	18.5	15.0
EL8-PT1/4	8	R1/4	20.7	30.2	28.4	37.5	11.0	16	14.0×15.4	14.5	7.0	7.0	23.0	20.0
EL8-PT3/8	8	R3/8	20.7	31.2	30.0	38.5	12.0	16	17.0×18.5	14.5	9.0	7.0	23.0	28.0
EL10-PT1/8	10	R1/8	24.7	29.2	33.9	38.0	8.0	19	17.0×18.5	17.5	5.0	5.0	22.0	22.0
EL10-PT1/4	10	R1/4	24.7	33.2	33.9	42.0	11.0	19	17.0×18.5	17.5	7.0	7.0	34.5	27.0
EL10-PT3/8	10	R3/8	24.7	34.2	33.9	43.0	12.0	19	17.0×18.5	17.5	9.0	9.0	37.0	33.0
EL10-PT1/2	10	R1/2	24.7	38.2	36.9	47.0	15.0	19	22.0×24.5	17.5	12.0	9.0	37.0	52.0
EL12-PT1/4	12	R1/4	26.3	35.7	36.8	45.7	11.0	20	19.0×21.0	20.0	7.0	7.0	36.0	34.0
EL12-PT3/8	12	R3/8	26.3	36.7	36.8	46.7	12.0	20	19.0×21.0	20.0	9.0	9.0	43.0	39.0
EL12-PT1/2	12	R1/2	26.3	40.7	38.6	50.7	15.0	20	22.0×24.5	20.0	12.0	10.0	43.0	56.0
EL16-PT3/8	16	R3/8	34.9	45.0	48.4	58.8	12.0	27	24.0×27.0	28.0	11.0	11.0	70.0	70.0
EL16-PT1/2	16	R1/2	34.9	48.0	48.4	61.8	15.0	27	24.0×27.0	28.0	12.0	12.0	93.0	84.0

\*Made to order

● Inch size type

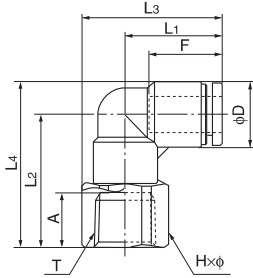
Product number	Applicable tube outer diameter (inch)	T Thread size (M,R)	L <sub>1</sub> (mm)	L <sub>2</sub> (mm)	L <sub>3</sub> (mm)	L <sub>4</sub> (mm)	A (mm)	F Tube insertion length (mm)	H×φ Width across flat (mm)	D (mm)	d <sub>1</sub> (mm)	Min. inner diameter (mm)	Effective cross-sectional area (mm <sup>2</sup> )	Weight (g)
EL1/4-M5	1/4	M5×0.8	18.1	22.7	24.6	29.0	4.0	15	12.0×13.0	13.0	2.0	2.0	3.0	10.0
EL1/4-PT1/8	1/4	R1/8	18.1	25.2	24.6	31.5	8.0	15	12.0×13.0	13.0	5.0	5.0	13.0	18.0
EL1/4-PT1/4	1/4	R1/4	18.1	29.2	25.8	35.5	11.0	15	14.0×15.4	13.0	7.0	5.0	13.0	18.0
EL1/4-PT3/8	1/4	R3/8	18.1	30.2	27.4	36.5	12.0	15	17.0×18.5	13.0	9.0	5.0	13.0	26.0
EL5/16-PT1/8	5/16	R1/8	20.6	26.2	28.3	33.5	8.0	16	14.0×15.4	15.0	5.0	5.0	18.5	15.0
EL5/16-PT1/4	5/16	R1/4	20.6	30.2	28.3	37.5	11.0	16	14.0×15.4	15.0	7.0	7.0	23.0	20.0
EL5/16-PT3/8	5/16	R3/8	20.6	31.2	29.9	38.5	12.0	16	17.0×18.5	15.0	9.0	7.0	23.0	28.0
EL3/8-PT1/8	3/8	R1/8	24.4	29.2	33.7	38.0	8.0	19	17.0×18.5	18.0	5.0	5.0	19.0	22.0
EL3/8-PT1/4	3/8	R1/4	24.4	33.2	33.7	42.0	11.0	19	17.0×18.5	18.0	7.0	7.0	30.0	27.0
EL3/8-PT3/8	3/8	R3/8	24.4	34.2	33.7	43.0	12.0	19	17.0×18.5	18.0	9.0	9.0	32.0	33.0
EL3/8-PT1/2	3/8	R1/2	24.4	38.2	36.7	47.0	15.0	19	22.0×24.5	18.0	12.0	9.0	32.0	52.0
EL1/2-PT1/4	1/2	R1/4	26.5	35.7	37.0	46.2	11.0	21	19.0×21.0	21.5	7.0	7.0	37.0	34.0
EL1/2-PT3/8	1/2	R3/8	26.5	36.7	37.0	47.2	12.0	21	19.0×21.0	21.5	9.0	9.0	53.0	39.0
EL1/2-PT1/2	1/2	R1/2	26.5	40.7	38.7	51.2	15.0	21	22.0×24.5	21.5	12.0	10.0	55.5	56.0

The inch size type is not plated.

Tube  
Clean tube  
Processed tube  
PushOne fitting  
QuickSeal fitting  
Clean fitting/ Chemfit  
Bamboo-shoot fitting  
Control switch/ Detachable series  
Jig/Tool/ Accessory  
Technical information  
Reference

## 90 degree internal elbow

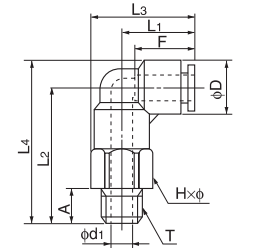
### ●Millimeter size type



Product number	Applicable tube outer diameter (mm)	T Thread size (Rc)	L1 (mm)	L2 (mm)	L3 (mm)	L4 (mm)	A (mm)	F Tube insertion length (mm)	H×φ Width across flat (mm)	D (mm)	Min. inner diameter (mm)	Effective cross-sectional area (mm <sup>2</sup> )	Weight (g)
EFL4-PT1/8	4	Rc1/8	17.2	21.7	24.9	22.1	8.0	13	14.0×15.4	9.8	3.0	—	13.0
EFL6-PT1/8	6	Rc1/8	18.5	24.2	26.2	30.5	8.0	15	14.0×15.4	12.6	5.0	—	15.0
EFL6-PT1/4	6	Rc1/4	18.5	28.2	27.8	34.5	12.0	15	17.0×18.5	12.6	5.0	—	23.0
EFL6-PT3/8	6	Rc3/8	18.5	28.7	30.8	35.0	12.5	15	22.0×24.5	12.6	5.0	—	37.0
EFL8-PT1/8	8	Rc1/8	20.7	25.2	28.4	32.5	8.0	16	14.0×15.4	14.6	7.0	—	17.0
EFL8-PT1/4	8	Rc1/4	20.7	29.2	30.0	36.5	12.0	16	17.0×18.5	14.6	7.0	—	25.0
EFL8-PT3/8	8	Rc3/8	20.7	29.7	33.0	37.0	12.5	16	22.0×24.5	14.6	7.0	—	38.0
EFL10-PT1/4	10	Rc1/4	24.7	32.2	34.0	41.0	12.0	19	17.0×18.5	17.5	9.0	—	29.0
EFL10-PT3/8	10	Rc3/8	24.7	33.7	37.0	42.5	12.5	19	22.0×24.5	17.5	9.0	—	45.0
EFL12-PT3/8	12	Rc3/8	26.3	36.2	38.6	46.2	12.5	20	22.0×24.5	20.0	10.0	—	49.0
EFL12-PT1/2	12	Rc1/2	26.3	39.2	39.6	49.2	15.5	20	24.0×26.5	20.0	10.0	—	54.0

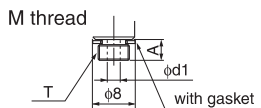
## 90 degree long elbow

### ●Millimeter size type



Product number	Applicable tube outer diameter (mm)	T Thread size (M,R)	L1 (mm)	L2 (mm)	L3 (mm)	L4 (mm)	A (mm)	F Tube insertion length (mm)	H×φ Width across flat (mm)	D (mm)	d1 (mm)	Min. inner diameter (mm)	Effective cross-sectional area (mm <sup>2</sup> )	Weight (g)
ELL4-M5	4	M5×0.8	17.2	29.9	22.7	34.8	4.0	13	10.0×11.0	9.8	2.0	2.0	3.0	13.0
ELL4-PT1/8	4	R1/8	17.2	32.4	22.7	37.3	8.0	13	10.0×11.0	9.8	5.0	3.0	4.0	14.0
ELL4-PT1/4	4	R1/4	17.2	36.4	24.9	41.3	11.0	13	14.0×15.4	9.8	7.0	3.0	4.0	27.0
ELL6-M5	6	M5×0.8	18.5	34.7	25.0	41.0	4.0	15	12.0×13.0	12.6	2.0	2.0	3.5	20.0
ELL6-PT1/8	6	R1/8	18.5	37.2	25.0	43.5	8.0	15	12.0×13.0	12.6	5.0	5.0	12.0	22.0
ELL6-PT1/4	6	R1/4	18.5	41.2	26.2	47.5	11.0	15	14.0×15.4	12.6	7.0	5.0	12.0	31.0
ELL6-PT3/8	6	R3/8	18.5	42.2	27.8	48.5	12.0	15	17.0×18.5	12.6	9.0	5.0	12.0	45.0
ELL8-PT1/8	8	R1/8	20.7	40.2	28.4	47.5	8.0	16	14.0×15.4	14.6	5.0	5.0	18.5	30.0
ELL8-PT1/4	8	R1/4	20.7	44.2	28.4	51.5	11.0	16	14.0×15.4	14.6	7.0	7.0	23.0	35.0
ELL8-PT3/8	8	R3/8	20.7	45.2	30.0	52.5	12.0	16	17.0×18.5	14.6	9.0	7.0	23.0	50.0
ELL10-PT1/8	10	R1/8	24.7	46.2	33.9	55.0	8.0	19	17.0×18.5	17.5	5.0	5.0	22.0	48.0
ELL10-PT1/4	10	R1/4	24.7	50.2	33.9	59.0	11.0	19	17.0×18.5	17.5	7.0	7.0	34.5	53.0
ELL10-PT3/8	10	R3/8	24.7	51.2	33.9	60.0	12.0	19	17.0×18.5	17.5	9.0	9.0	37.0	59.0
ELL10-PT1/2	10	R1/2	24.7	55.2	36.9	64.0	15.0	19	22.0×24.5	17.5	12.0	9.0	37.0	94.0
ELL12-PT1/4	12	R1/4	26.3	55.2	36.8	65.2	11.0	20	19.0×21.0	20.0	7.0	7.0	36.0	72.0
ELL12-PT3/8	12	R3/8	26.3	56.2	36.8	66.2	12.0	20	19.0×21.0	20.0	9.0	9.0	43.0	78.0
ELL12-PT1/2	12	R1/2	26.3	60.2	38.6	70.2	15.0	20	22.0×24.5	20.0	12.0	10.0	43.0	105.0

### ●Inch size type



Product number	Applicable tube outer diameter (inch)	T Thread size (M,R)	L1 (mm)	L2 (mm)	L3 (mm)	L4 (mm)	A (mm)	F Tube insertion length (mm)	H×φ Width across flat (mm)	D (mm)	d1 (mm)	Min. inner diameter (mm)	Effective cross-sectional area (mm <sup>2</sup> )	Weight (g)
ELL1/4-M5	1/4	M5×0.8	18.1	34.7	24.6	41.0	4.0	15	12.0×13.0	13.0	2.0	2.0	3.0	20.0
ELL1/4-PT1/8	1/4	R1/8	18.1	37.2	24.6	43.5	8.0	15	12.0×13.0	13.0	5.0	5.0	13.0	22.0
ELL1/4-PT1/4	1/4	R1/4	18.1	41.2	25.8	47.5	11.0	15	14.0×15.4	13.0	7.0	5.0	13.0	31.0
ELL5/16-PT1/8	5/16	R1/8	20.6	40.2	28.3	47.5	8.0	16	14.0×15.4	15.0	5.0	5.0	18.5	30.0
ELL5/16-PT1/4	5/16	R1/4	20.6	44.2	28.3	51.5	11.0	16	14.0×15.4	15.0	7.0	7.0	23.0	35.0
ELL5/16-PT3/8	5/16	R3/8	24.4	45.2	29.9	52.5	12.0	19	17.0×18.5	18.0	9.0	7.0	—	—
ELL3/8-PT1/4	3/8	R1/4	24.4	50.2	33.7	59.0	11.0	19	17.0×18.5	18.0	7.0	7.0	30.0	53.0
ELL3/8-PT3/8	3/8	R3/8	24.4	51.2	33.7	60.0	12.0	19	17.0×18.5	18.0	9.0	9.0	32.0	59.0
ELL1/2-PT1/4	1/2	R1/4	26.5	55.2	37.0	65.7	11.0	21	19.0×21.0	21.5	7.0	7.0	37.0	72.0
ELL1/2-PT3/8	1/2	R3/8	26.5	56.2	37.0	66.7	12.0	21	19.0×21.0	21.5	9.0	9.0	53.0	78.0
ELL1/2-PT1/2	1/2	R1/2	26.5	60.2	38.7	70.7	15.0	21	22.0×24.5	21.5	12.0	10.0	55.5	105.0

☞The inch size type is not plated.

Tube

Clean tube

Processed tube

PushOne fitting

QuickSeal fitting

Clean fitting/ Chemifit

Bamboo-shoot fitting

Control switch/ Detachable series

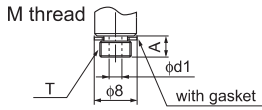
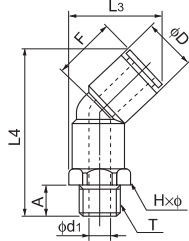
Jig/Tool/ Accessory

Technical information

Reference

## 45 degree elbow

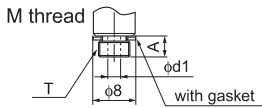
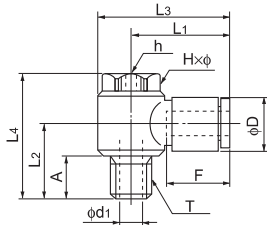
### ●Millimeter size type



Product number	Applicable tube outer diameter (mm)	T Thread size (M,R)	L <sub>3</sub> (mm)	L <sub>4</sub> (mm)	A (mm)	F Tube insertion length (mm)	H×φ Width across flat (mm)	D (mm)	d <sub>1</sub> (mm)	Min. inner diameter (mm)	Effective cross-sectional area (mm <sup>2</sup> )	Weight (g)
E45L4-M5	4	M5×0.8	19.7	34.4	4.0	13	10.0×11.0	9.8	2.0	2.0	3.0	7.0
E45L4-PT1/8	4	R1/8	19.7	36.9	8.0	13	10.0×11.0	9.8	5.0	3.0	4.0	9.0
E45L4-PT1/4	4	R1/4	21.9	40.9	11.0	13	14.0×15.4	9.8	7.0	3.0	4.0	16.0
E45L6-M5	6	M5×0.8	22.4	38.6	4.0	15	12.0×13.0	12.6	2.0	2.0	3.5	10.0
E45L6-PT1/8	6	R1/8	22.4	41.1	8.0	15	12.0×13.0	12.6	5.0	5.0	12.0	12.0
E45L6-PT1/4	6	R1/4	23.6	45.1	11.0	15	14.0×15.4	12.6	7.0	5.0	12.0	18.0
E45L6-PT3/8	6	R3/8	25.2	46.1	12.0	15	17.0×18.5	12.6	9.0	5.0	12.0	26.0
E45L8-PT1/8	8	R1/8	25.5	44.0	8.0	16	14.0×15.4	14.6	5.0	5.0	18.5	15.0
E45L8-PT1/4	8	R1/4	25.5	48.0	11.0	16	14.0×15.4	14.6	7.0	7.0	23.0	20.0
E45L8-PT3/8	8	R3/8	27.0	49.0	12.0	16	17.0×18.5	14.6	9.0	7.0	23.0	28.0
E45L10-PT1/8	10	R1/8	30.0	50.0	8.0	19	17.0×18.5	17.5	5.0	5.0	22.0	22.0
E45L10-PT1/4	10	R1/4	30.0	54.0	11.0	19	17.0×18.5	17.5	7.0	7.0	34.5	27.0
E45L10-PT3/8	10	R3/8	30.0	55.0	12.0	19	17.0×18.5	17.5	9.0	9.0	37.0	33.0
E45L10-PT1/2	10	R1/2	33.0	59.0	15.0	19	22.0×24.5	17.5	12.0	9.0	38.5	52.0
E45L12-PT1/4	12	R1/4	33.5	58.7	11.0	20	19.0×21.0	20.0	7.0	7.0	43.0	34.0
E45L12-PT3/8	12	R3/8	33.5	59.7	12.0	20	19.0×21.0	20.0	9.0	9.0	47.0	40.0
E45L12-PT1/2	12	R1/2	35.3	63.7	15.0	20	22.0×24.5	20.0	12.0	10.0	47.0	57.0

## Universal elbow

### ●Millimeter size type



Product number	Applicable tube outer diameter (mm)	T Thread size (M,R)	L <sub>1</sub> (mm)	L <sub>2</sub> (mm)	L <sub>3</sub> (mm)	L <sub>4</sub> (mm)	A (mm)	F Tube insertion length (mm)	H×φ Width across flat (mm)	h (mm)	D (mm)	d <sub>1</sub> (mm)	Min. inner diameter (mm)	Effective cross-sectional area (mm <sup>2</sup> )	Weight (g)
ELB4-M5	4	M5×0.8	20.4	11.5	25.3	21.0	4.0	13	8.0×9.0	3.0	9.8	2.0	2.0	3.0	10.0
ELB4-PT1/8	4	R1/8	23.4	17.5	30.4	30.0	9.5	13	13.0×14.0	5.0	9.8	5.0	3.0	4.0	20.0
ELB6-M5	6	M5×0.8	20.8	11.5	25.6	21.0	4.0	15	8.0×9.0	3.0	12.6	2.0	2.0	3.5	10.0
ELB6-PT1/8	6	R1/8	22.8	17.5	29.8	30.0	9.5	15	13.0×14.0	5.0	12.6	5.0	3.2	8.0	21.0
ELB6-PT1/4	6	R1/4	24.8	22.9	34.5	37.5	13.4	15	17.0×18.3	6.0	12.6	7.0	4.2	9.0	43.0
ELB8-PT1/8	8	R1/8	24.4	17.5	31.4	30.0	9.5	16	13.0×14.0	5.0	14.6	5.0	3.2	9.0	41.0
ELB8-PT1/4	8	R1/4	26.4	22.9	36.1	37.5	13.4	16	17.0×18.3	6.0	14.6	7.0	4.2	14.5	44.0
ELB8-PT3/8	8	R3/8	28.4	24.4	40.4	40.5	13.9	16	21.0×22.6	8.0	14.6	9.0	6.0	19.0	69.0
ELB10-PT1/4	10	R1/4	29.4	22.9	39.1	37.5	13.4	19	17.0×18.3	6.0	17.5	7.0	4.2	15.5	74.0
ELB10-PT3/8	10	R3/8	31.4	24.4	43.4	40.5	13.9	19	21.0×22.6	8.0	17.5	9.0	6.0	23.0	74.0
ELB12-PT3/8	12	R3/8	34.3	24.3	48.3	40.5	13.8	20	24.0×26.0	8.0	20.0	10.0	8.0	25.5	92.0
ELB12-PT1/2	12	R1/2	34.3	27.3	48.3	43.5	16.8	20	24.0×26.0	8.0	20.0	12.0	8.0	25.5	100.0

Tube

Clean tube

Processed tube

PushOne fitting

QuickSeal fitting

Clean fitting/ Chemifit

Bamboo-shoot fitting

Control switch/ Detachable series

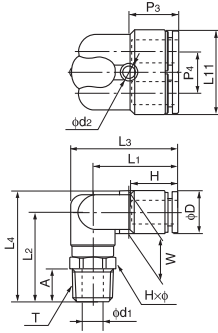
Jig/Tool/ Accessory

Technical information

Reference

## 90 degree branch elbow

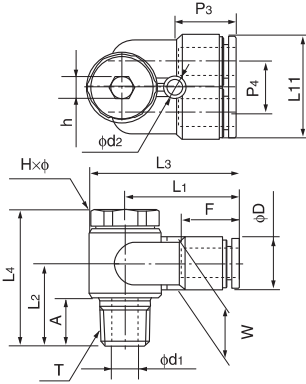
### ●Millimeter size type



Product number	Applicable tube outer diameter (mm)	T Thread size (R)	L1 (mm)	L2 (mm)	L3 (mm)	L4 (mm)	L11 (mm)	A (mm)	F Tube insertion length (mm)	H×φ Width across flat (mm)	P3 (mm)	P4 (mm)	W (mm)	D (mm)	d1 (mm)	d2 (mm)	Effective cross-sectional area (mm <sup>2</sup> )	Weight (g)
ELY6-PT1/8	6	R1/8	25.6	25.2	32.1	31.5	24.8	8.0	15	12.0×13.0	14.8	12.2	12.6	12.6	5.0	4.2	—	16.0
ELY6-PT1/4	6	R1/4	25.6	29.2	33.3	35.5	24.8	11.0	15	14.0×15.4	14.8	12.2	12.6	12.6	7.0	4.2	—	23.0
ELY8-PT1/8	8	R1/8	28.2	26.2	35.9	33.5	28.8	8.0	16	14.0×15.4	16.4	14.2	14.6	14.6	5.0	4.2	—	21.0
ELY8-PT1/4	8	R1/4	28.2	30.2	35.9	37.5	28.8	11.0	16	14.0×15.4	16.4	14.2	14.6	14.6	7.0	4.2	—	27.0
ELY8-PT3/8	8	R3/8	28.2	31.2	37.5	38.5	28.8	12.0	16	17.0×18.5	16.4	14.2	14.6	14.6	9.0	4.2	—	35.0
ELY10-PT1/4	10	R1/4	31.3	33.2	40.5	42.0	35.0	11.0	19	17.0×18.5	18.4	17.5	17.5	17.5	7.0	4.2	—	37.0
ELY10-PT3/8	10	R3/8	31.3	34.2	40.5	43.0	35.0	12.0	19	17.0×18.5	18.4	17.5	17.5	17.5	9.0	4.2	—	43.0

## Universal branch elbow

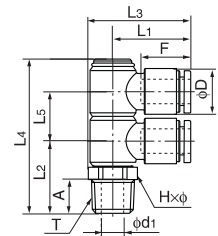
### ●Millimeter size type



Product number	Applicable tube outer diameter (mm)	T Thread size (R)	L1 (mm)	L2 (mm)	L3 (mm)	L4 (mm)	L11 (mm)	A (mm)	F Tube insertion length (mm)	H×φ Width across flat (mm)	h Width across flat (mm)	P3 (mm)	P4 (mm)	W (mm)	D (mm)	d1 (mm)	d2 (mm)	Effective cross-sectional area (mm <sup>2</sup> )	Weight (g)
ELYB6-PT1/8	6	R1/8	26.1	17.5	33.1	30.0	24.8	8.0	15	13.0×14.0	5.0	14.8	12.2	12.6	12.6	5.0	4.2	—	25.0
ELYB6-PT1/4	6	R1/4	29.0	22.9	38.7	37.5	24.8	11.0	15	17.0×18.3	6.0	14.8	12.2	12.6	12.6	7.0	4.2	—	46.0
ELYB8-PT1/4	8	R1/4	30.6	22.9	40.3	37.5	28.8	11.0	16	17.0×18.3	6.0	16.4	14.2	14.6	14.6	7.0	4.2	—	49.0
ELYB8-PT3/8	8	R3/8	32.9	22.5	40.5	40.5	28.8	12.0	16	21.0×22.6	8.0	16.4	14.2	14.6	14.6	9.0	4.2	—	58.0
ELYB10-PT1/4	10	R1/4	34.9	23.4	46.9	39.5	35.0	11.0	19	21.0×22.6	8.0	18.4	17.5	17.5	17.5	7.0	4.2	—	72.0
ELYB10-PT3/8	10	R3/8	34.9	24.4	46.9	40.5	35.0	12.0	19	21.0×22.6	8.0	18.4	17.5	17.5	17.5	9.0	4.2	—	80.0

## Double universal elbow

### ●Millimeter size type



Product number	Applicable tube outer diameter (mm)	T Thread size (R)	L1 (mm)	L2 (mm)	L3 (mm)	L4 (mm)	L5 (mm)	A (mm)	F Tube insertion length (mm)	H×φ Width across flat (mm)	D (mm)	d1 (mm)	Effective cross-sectional area (mm <sup>2</sup> )	Weight (g)
ELWB6-PT1/8	6	R1/8	22.8	18.8	30.5	42.3	13.5	8.0	15	14.0×15.4	12.6	5.0	—	33.0
ELWB6-PT1/4	6	R1/4	22.8	21.8	30.5	45.3	13.5	11.0	15	14.0×15.4	12.6	7.0	—	35.0
ELWB8-PT1/4	8	R1/4	24.4	23.0	32.1	50.0	16.0	11.0	16	14.0×15.4	14.6	7.0	—	39.0
ELWB8-PT3/8	8	R3/8	24.4	24.0	32.1	54.0	16.0	12.0	16	17.0×18.5	14.6	9.0	—	47.0
ELWB10-PT1/4	10	R1/4	29.4	24.5	39.1	56.0	19.0	11.0	19	17.0×18.5	17.5	7.0	—	72.0
ELWB10-PT3/8	10	R3/8	29.4	25.5	39.1	57.0	19.0	12.0	19	17.0×18.5	17.5	9.0	—	70.0

Tube

Clean tube

Processed tube

PushOne fitting

QuickSeal fitting

Clean fitting/Chemifit

Bamboo-shoot fitting

Control switch/Detachable series

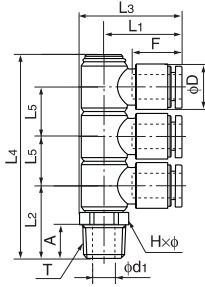
Jig/Tool/Accessory

Technical information

Reference

## Triple universal elbow

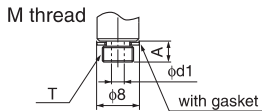
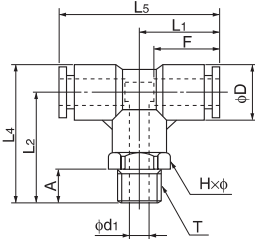
### ● Millimeter size type



Product number	Applicable tube outer diameter (mm)	T Thread size (R)	L1 (mm)	L2 (mm)	L3 (mm)	L4 (mm)	L5 (mm)	A (mm)	F Tube insertion length (mm)	H×φ Width across flat (mm)	D (mm)	d1 (mm)	Effective cross-sectional area (mm <sup>2</sup> )	Weight (g)
ELTB6-PT1/8	6	R1/8	22.8	18.8	30.5	55.5	13.5	8.0	15	14.0×15.4	12.6	5.0	—	43.0
ELTB6-PT1/4	6	R1/4	22.8	21.8	30.5	58.5	13.5	11.0	15	14.0×15.4	12.6	7.0	—	45.0
ELTB8-PT1/4	8	R1/4	24.4	23.0	32.1	66.0	16.0	11.0	16	14.0×15.4	14.6	7.0	—	51.0
ELTB8-PT3/8	8	R3/8	24.4	24.0	32.1	67.0	16.0	12.0	16	17.0×18.5	14.6	9.0	—	59.0
ELTB10-PT1/4	10	R1/4	29.4	24.5	39.1	75.5	19.0	11.0	19	17.0×18.5	17.5	7.0	—	98.0
ELTB10-PT3/8	10	R3/8	29.4	25.5	39.1	76.5	19.0	12.0	19	17.0×18.5	17.5	9.0	—	92.0

## Tee

### ● Millimeter size type



Product number	Applicable tube outer diameter (mm)	T Thread size (M,R)	L1 (mm)	L2 (mm)	L4 (mm)	L5 (mm)	A (mm)	F Tube insertion length (mm)	H×φ Width across flat (mm)	D (mm)	d1 (mm)	Min. inner diameter (mm)	Effective cross-sectional area (mm <sup>2</sup> )	Weight (g)
ET4-M5	4	M5×0.8	17.2	20.2	25.1	34.4	4.0	13	10.0×11.0	9.8	2.0	2.0	3.0	8.0
ET4-PT1/8	4	R1/8	17.2	22.7	27.6	34.4	8.0	13	10.0×11.0	9.8	5.0	3.0	4.0	10.0
ET4-PT1/4	4	R1/4	17.2	26.7	31.6	34.4	11.0	13	14.0×15.4	9.8	7.0	3.0	4.0	17.0
ET6-M5	6	M5×0.8	18.5	22.7	29.0	37.0	4.0	15	12.0×13.0	12.6	2.0	2.0	3.5	12.0
ET6-PT1/8	6	R1/8	18.5	25.2	31.5	37.0	8.0	15	12.0×13.0	12.6	5.0	5.0	12.0	14.0
ET6-PT1/4	6	R1/4	18.5	29.2	35.5	37.0	11.0	15	14.0×15.4	12.6	7.0	5.0	12.0	21.0
ET6-PT3/8	6	R3/8	18.5	30.2	36.5	37.0	12.0	15	17.0×18.5	12.6	9.0	5.0	12.0	29.0
ET8-PT1/8	8	R1/8	20.7	26.2	33.5	41.4	8.0	16	14.0×15.4	14.6	5.0	5.0	18.5	18.0
ET8-PT1/4	8	R1/4	20.7	30.2	37.5	41.4	11.0	16	14.0×15.4	14.6	7.0	7.0	23.0	24.0
ET8-PT3/8	8	R3/8	20.7	31.2	38.5	41.4	12.0	16	17.0×18.5	14.6	9.0	7.0	23.0	32.0
ET10-PT1/8	10	R1/8	24.7	29.2	38.0	49.3	8.0	19	17.0×18.5	17.5	5.0	5.0	22.0	28.0
ET10-PT1/4	10	R1/4	24.7	33.2	42.0	49.3	11.0	19	17.0×18.5	17.5	7.0	7.0	34.5	34.0
ET10-PT3/8	10	R3/8	24.7	34.2	43.0	49.3	12.0	19	17.0×18.5	17.5	9.0	9.0	37.0	39.0
ET10-PT1/2	10	R1/2	24.7	38.2	47.0	49.3	15.0	19	22.0×24.5	17.5	12.0	9.0	37.0	58.0
ET12-PT1/4	12	R1/4	26.3	35.7	45.7	52.6	11.0	20	19.0×21.0	20.0	7.0	7.0	36.0	43.0
ET12-PT3/8	12	R3/8	26.3	36.7	46.7	52.6	12.0	20	19.0×21.0	20.0	9.0	9.0	43.0	48.0
ET12-PT1/2	12	R1/2	26.3	40.7	50.7	52.6	15.0	20	22.0×24.5	20.0	12.0	10.0	43.0	65.0
ET16-PT3/8	16	R3/8	34.9	45.0	58.8	69.8	12.0	27	24.0×27.0	28.0	11.0	11.0	70.0	92.0
ET16-PT1/2	16	R1/2	34.9	48.0	61.8	69.8	15.0	27	24.0×27.0	28.0	12.0	12.0	93.0	106.0

### ● Inch size type

Product number	Applicable tube outer diameter (inch)	T Thread size (M,R)	L1 (mm)	L2 (mm)	L4 (mm)	L5 (mm)	A (mm)	F Tube insertion length (mm)	H×φ Width across flat (mm)	D (mm)	d1 (mm)	Min. inner diameter (mm)	Effective cross-sectional area (mm <sup>2</sup> )	Weight (g)
ET1/4-PT1/8	1/4	R1/8	18.1	25.2	31.5	36.2	8.0	15	12.0×13.0	13.0	5.0	4.6	13.0	14.0
ET1/4-PT1/4	1/4	R1/4	18.1	29.2	35.5	36.2	11.0	15	14.0×15.4	13.0	7.0	4.6	13.0	21.0
ET5/16-PT1/8	5/16	R1/8	20.6	26.2	33.5	41.2	8.0	16	14.0×15.4	15.0	5.0	5.0	18.5	18.0
ET5/16-PT1/4	5/16	R1/4	20.6	30.2	37.5	41.2	11.0	16	14.0×15.4	15.0	7.0	7.0	23.0	24.0
ET5/16-PT3/8	5/16	R3/8	24.4	31.2	38.5	48.8	12.0	19	17.0×18.5	18.0	9.0	7.0	—	—
ET3/8-PT1/4	3/8	R1/4	24.4	33.2	42.0	48.8	11.0	19	17.0×18.5	18.0	7.0	7.0	30.0	34.0
ET3/8-PT3/8	3/8	R3/8	24.4	34.2	43.0	48.8	12.0	19	17.0×18.5	18.0	9.0	9.0	32.0	39.0
ET3/8-PT1/2	3/8	R1/2	24.4	38.2	47.0	48.8	15.0	19	22.0×24.5	18.0	12.0	9.0	32.0	58.0
ET1/2-PT3/8	1/2	R3/8	26.5	36.7	47.2	52.9	12.0	21	19.0×21.0	21.5	9.0	9.0	53.0	48.0
ET1/2-PT1/2	1/2	R1/2	26.5	40.7	51.2	52.9	15.0	21	22.0×24.5	21.5	12.0	10.0	55.5	65.0

☞ The inch size type is not plated.

Tube

Clean tube

Processed tube

PushOne fitting

QuickSeal fitting

Clean fitting/ Chemifit

Bamboo-shoot fitting

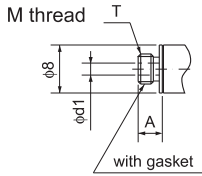
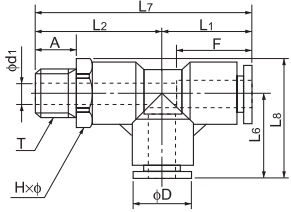
Control switch/ Detachable series

Jig/Tool/ Accessory

Technical information

Reference

Service tee



●Millimeter size type

Product number	Applicable tube outer diameter (mm)	T Thread size (M,R)	L <sub>1</sub> (mm)	L <sub>2</sub> (mm)	L <sub>5</sub> (mm)	L <sub>7</sub> (mm)	L <sub>8</sub> (mm)	A (mm)	F Tube insertion length (mm)	H×φ Width across flat (mm)	D (mm)	d <sub>1</sub> (mm)	Min. inner diameter (mm)	Effective cross-sectional area (mm <sup>2</sup> )	Weight (g)
EST4-M5	4	M5×0.8	17.2	20.2	17.2	37.4	22.1	4.0	13	10.0×11.0	9.8	2.0	2.0	3.0	8.0
EST4-PT1/8	4	R1/8	17.2	22.7	17.2	39.9	22.1	8.0	13	10.0×11.0	9.8	5.0	3.0	4.0	10.0
EST4-PT1/4	4	R1/4	17.2	26.7	17.2	43.9	24.9	11.0	13	14.0×15.4	9.8	7.0	3.0	4.0	18.0
EST6-M5	6	M5×0.8	18.5	22.7	18.5	41.2	25.0	4.0	15	12.0×13.0	12.6	2.0	2.0	3.5	12.0
EST6-PT1/8	6	R1/8	18.5	25.2	18.5	43.7	25.0	8.0	15	12.0×13.0	12.6	5.0	5.0	12.0	14.0
EST6-PT1/4	6	R1/4	18.5	29.2	18.5	47.7	26.2	11.0	15	14.0×15.4	12.6	7.0	5.0	12.0	21.0
EST6-PT3/8	6	R3/8	18.5	30.2	18.5	48.7	27.8	12.0	15	17.0×18.5	12.6	9.0	5.0	12.0	29.0
EST8-PT1/8	8	R1/8	20.7	26.2	20.7	46.9	28.4	8.0	16	14.0×15.4	14.6	5.0	5.0	18.5	18.0
EST8-PT1/4	8	R1/4	20.7	30.2	20.7	50.9	28.4	11.0	16	14.0×15.4	14.6	7.0	7.0	23.0	24.0
EST8-PT3/8	8	R3/8	20.7	31.2	20.7	51.9	30.0	12.0	16	17.0×18.5	14.6	9.0	7.0	23.0	32.0
EST10-PT1/8	10	R1/8	24.7	29.2	24.7	53.9	33.9	8.0	19	17.0×18.5	17.5	5.0	5.0	22.0	28.0
EST10-PT1/4	10	R1/4	24.7	33.2	24.7	57.9	33.9	11.0	19	17.0×18.5	17.5	7.0	7.0	34.5	34.0
EST10-PT3/8	10	R3/8	24.7	34.2	24.7	58.9	33.9	12.0	19	17.0×18.5	17.5	9.0	9.0	37.0	40.0
EST10-PT1/2	10	R1/2	24.7	38.2	24.7	62.9	36.9	15.0	19	22.0×24.5	17.5	12.0	9.0	37.0	58.0
EST12-PT1/4	12	R1/4	26.3	35.7	26.3	62.0	36.8	11.0	20	19.0×21.0	20.0	7.0	7.0	36.0	43.0
EST12-PT3/8	12	R3/8	26.3	36.7	26.3	63.0	36.8	12.0	20	19.0×21.0	20.0	9.0	9.0	43.0	48.0
EST12-PT1/2	12	R1/2	26.3	40.7	26.3	67.0	38.6	15.0	20	22.0×24.5	20.0	12.0	10.0	43.0	65.0
EST16-PT3/8	16	R3/8	34.9	45.0	34.9	79.9	48.7	12.0	27	24.0×27.0	28.0	11.0	11.0	70.0	92.0
EST16-PT1/2	16	R1/2	34.9	48.0	34.9	82.9	48.7	15.0	27	24.0×27.0	28.0	12.0	12.0	93.0	106.0

●Inch size type

Product number	Applicable tube outer diameter (inch)	T Thread size (R)	L <sub>1</sub> (mm)	L <sub>2</sub> (mm)	L <sub>5</sub> (mm)	L <sub>7</sub> (mm)	L <sub>8</sub> (mm)	A (mm)	F Tube insertion length (mm)	H×φ Width across flat (mm)	D (mm)	d <sub>1</sub> (mm)	Min. inner diameter (mm)	Effective cross-sectional area (mm <sup>2</sup> )	Weight (g)
EST1/4-PT1/8	1/4	R1/8	18.1	25.2	18.1	43.3	24.6	8.0	15	12.0×13.0	13.0	5.0	5.0	13.0	14.0
EST1/4-PT1/4	1/4	R1/4	18.1	29.2	18.1	47.3	25.8	11.0	15	14.0×15.4	13.0	7.0	5.0	13.0	21.0
EST5/16-PT1/8	5/16	R1/8	20.6	26.2	20.6	46.8	28.3	8.0	16	14.0×15.4	15.0	5.0	5.0	18.5	18.0
EST5/16-PT1/4	5/16	R1/4	20.6	30.2	20.6	50.8	28.3	11.0	16	14.0×15.4	15.0	7.0	7.0	23.0	24.0
EST5/16-PT3/8	5/16	R3/8	24.4	31.2	24.4	51.9	29.9	12.0	19	17.0×18.5	18.0	9.0	7.0	—	—
EST3/8-PT1/4	3/8	R1/4	24.4	33.2	24.4	57.6	33.7	11.0	19	17.0×18.5	18.0	7.0	7.0	30.0	34.0
EST3/8-PT3/8	3/8	R3/8	24.4	34.2	24.4	58.6	33.7	12.0	19	17.0×18.5	18.0	9.0	9.0	32.0	40.0
EST3/8-PT1/2	3/8	R1/2	24.4	38.2	24.4	62.6	36.4	15.0	19	22.0×24.0	18.0	12.0	9.0	32.0	58.0
EST1/2-PT3/8	1/2	R3/8	27.5	36.7	27.5	64.2	38.0	12.0	21	19.0×21.0	21.5	9.0	9.0	53.0	48.0
EST1/2-PT1/2	1/2	R1/2	27.5	40.7	27.5	68.2	39.5	15.0	21	22.0×24.0	21.5	12.0	10.0	55.5	65.0

☞ The inch size type is not plated.

Tube

Clean tube

Processed tube

PushOne fitting

QuickSeal fitting

Clean fitting/Chemifit

Bamboo-shoot fitting

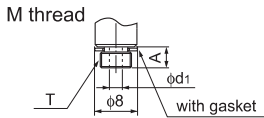
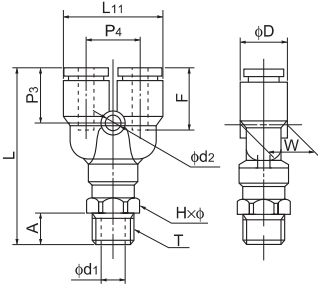
Control switch/Detachable series

Jig/Tool/Accessory

Technical information

Reference

## Y joint



### ●Millimeter size type

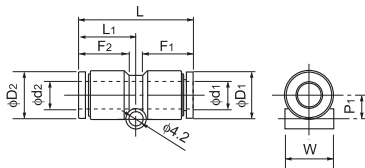
Product number	Applicable tube outer diameter (mm)	T Thread size (M,R)	L (mm)	L <sub>11</sub> (mm)	A (mm)	F Tube insertion length (mm)	H×φ Width across flat (mm)	P <sub>3</sub> (mm)	P <sub>4</sub> (mm)	W (mm)	D (mm)	d <sub>1</sub> (mm)	d <sub>2</sub> (mm)	Min. inner diameter (mm)	Effective cross-sectional area (mm <sup>2</sup> )	Weight (g)
EY4-M5	4	M5×0.8	37.9	20.8	4.0	13	10.0×11.0	13.5	11.0	9.8	9.8	2.0	3.2	2.0	2.5	9.0
EY4-PT1/8	4	R1/8	40.4	20.8	8.0	13	10.0×11.0	13.5	11.0	9.8	9.8	5.0	3.2	3.0	3.5	11.0
EY4-PT1/4	4	R1/4	44.4	20.8	11.0	13	14.0×15.4	13.5	11.0	9.8	9.8	7.0	3.2	3.0	3.5	18.0
EY6-M5	6	M5×0.8	41.3	24.8	4.0	15	12.0×13.0	14.7	12.2	12.5	12.6	2.0	4.2	2.0	2.5	13.0
EY6-PT1/8	6	R1/8	43.8	24.8	8.0	15	12.0×13.0	14.7	12.2	12.5	12.6	5.0	4.2	5.0	9.0	15.0
EY6-PT1/4	6	R1/4	47.8	24.8	11.0	15	14.0×15.4	14.7	12.2	12.5	12.6	7.0	4.2	5.0	9.0	22.0
EY6-PT3/8	6	R3/8	48.8	24.8	12.0	15	17.0×18.5	14.7	12.2	12.5	12.6	9.0	4.2	5.0	9.0	30.0
EY8-PT1/8	8	R1/8	46.9	28.8	8.0	16	14.0×15.4	16.4	14.2	14.6	14.6	5.0	4.2	5.0	17.5	20.0
EY8-PT1/4	8	R1/4	50.9	28.8	11.0	16	14.0×15.4	16.4	14.2	14.6	14.6	7.0	4.2	7.0	20.0	25.0
EY8-PT3/8	8	R3/8	51.9	28.8	12.0	16	17.0×18.5	16.4	14.2	14.6	14.6	9.0	4.2	7.0	20.0	33.0
EY10-PT1/4	10	R1/4	55.9	35.0	11.0	19	17.0×18.5	18.4	17.5	17.5	17.5	7.0	4.2	9.0	27.5	33.0
EY10-PT3/8	10	R3/8	56.9	35.0	12.0	19	17.0×18.5	18.4	17.5	17.5	17.5	9.0	4.2	9.0	28.0	41.0
EY10-PT1/2	10	R1/2	60.9	35.0	15.0	19	22.0×24.5	18.4	17.5	17.5	17.5	12.0	4.2	9.0	28.0	60.0
EY12-PT1/4	12	R1/4	60.8	40.0	11.0	20	19.0×21.0	20.3	20.0	20.0	20.0	7.0	4.2	7.0	34.5	47.0
EY12-PT3/8	12	R3/8	61.8	40.0	12.0	20	19.0×21.0	20.3	20.0	20.0	20.0	9.0	4.2	9.0	40.0	52.0
EY12-PT1/2	12	R1/2	65.8	40.0	15.0	20	22.0×24.5	20.3	20.0	20.0	20.0	12.0	4.2	10.0	40.0	70.0
EY16-PT3/8	16	R3/8	78.6	55.0	12.0	27	24.0×27.0	26.6	27.5	27.5	28.0	11.0	4.2	11.0	70.0	103.0
EY16-PT1/2	16	R1/2	81.6	55.0	15.0	27	24.0×27.0	26.6	27.5	27.5	28.0	12.0	4.2	12.0	71.0	117.0

### ●Inch size type

Product number	Applicable tube outer diameter (inch)	T Thread size (R)	L (mm)	L <sub>11</sub> (mm)	A (mm)	F Tube insertion length (mm)	H×φ Width across flat (mm)	P <sub>3</sub> (mm)	P <sub>4</sub> (mm)	W (mm)	D (mm)	d <sub>1</sub> (mm)	d <sub>2</sub> (mm)	Min. inner diameter (mm)	Effective cross-sectional area (mm <sup>2</sup> )	Weight (g)
EY1/4-PT1/8	1/4	R1/8	43.4	24.7	8.0	15	12.0×13.0	14.4	12.2	12.5	13.0	5.0	4.2	5.0	10.5	15.0
EY1/4-PT1/4	1/4	R1/4	47.4	24.7	11.0	15	14.0×15.4	14.4	12.2	12.5	13.0	7.0	4.2	5.0	10.5	22.0
EY5/16-PT1/8	5/16	R1/8	46.8	28.7	8.0	16	14.0×15.4	16.3	14.2	14.5	15.0	5.0	4.2	5.0	17.5	20.0
EY5/16-PT1/4	5/16	R1/4	50.8	28.7	11.0	16	14.0×15.4	16.3	14.2	14.5	15.0	7.0	4.2	7.0	20.0	25.0
EY5/16-PT3/8	5/16	R3/8	51.9	35.0	12.0	19	17.0×18.5	18.1	17.5	17.5	18.0	9.0	4.2	7.0	—	—
EY3/8-PT1/4	3/8	R1/4	55.6	35.0	11.0	19	17.0×18.5	18.1	17.5	17.5	18.0	7.0	4.2	7.0	26.0	33.0
EY3/8-PT3/8	3/8	R3/8	56.6	35.0	12.0	19	17.0×18.5	18.1	17.5	17.5	18.0	9.0	4.2	9.0	26.0	41.0
EY1/2-PT1/4	1/2	R1/4	62.5	42.0	11.0	21	19.0×21.0	20.5	21.0	21.0	21.5	7.0	4.2	7.0	37.0	47.0
EY1/2-PT3/8	1/2	R3/8	63.5	42.0	12.0	21	19.0×21.0	20.5	21.0	21.0	21.5	9.0	4.2	9.0	48.0	52.0
EY1/2-PT1/2	1/2	R1/2	67.5	42.0	15.0	21	22.0×24.0	20.5	21.0	21.0	21.5	12.0	4.2	11.0	48.0	70.0

☞ The inch size type is not plated.

## Union connector



### ●Millimeter size type

Product number	d <sub>1</sub> Applicable tube outer diameter (mm)	d <sub>2</sub> Applicable tube outer diameter (mm)	L (mm)	L <sub>1</sub> (mm)	P <sub>1</sub> (mm)	F <sub>1</sub> Tube insertion length (mm)	F <sub>2</sub> Tube insertion length (mm)	D <sub>1</sub> (mm)	D <sub>2</sub> (mm)	W (mm)	Min. inner diameter (mm)	Effective cross-sectional area (mm <sup>2</sup> )	Weight (g)
EUC4	4	4	31.8	15.9	5.0	13	13	9.8	9.8	9.7	4.0	3.5	4.0
EUC4-6	4	6	32.7	16.8	6.0	13	15	9.8	12.6	12.5	3.0	3.5	5.0
EUC6	6	6	33.6	16.8	6.0	15	15	12.6	12.6	12.5	6.0	12.5	6.0
EUC6-8	6	8	34.7	17.9	7.0	15	16	12.6	14.6	14.5	5.0	11.5	7.0
EUC8	8	8	35.8	17.9	7.0	16	16	14.6	14.6	14.5	8.0	28.0	8.0
EUC8-10	8	10	38.8	20.9	8.5	16	19	14.6	17.5	17.5	7.0	31.5	11.0
EUC10	10	10	41.7	20.9	8.5	19	19	17.5	17.5	17.5	14.0	45.0	14.0
EUC10-12	10	12	42.7	21.8	9.8	19	20	17.5	20.0	20.0	9.0	53.0	17.0
EUC12	12	12	43.6	21.8	9.8	20	27	20.0	20.0	20.0	19.0	67.0	19.0
EUC16	16	16	56.2	28.1	13.8	27	27	28.0	28.0	27.5	48.0	110.0	48.0

### ●Inch size type

Product number	d <sub>1</sub> Applicable tube outer diameter (inch)	d <sub>2</sub> Applicable tube outer diameter (inch)	L (mm)	L <sub>1</sub> (mm)	P <sub>1</sub> (mm)	F <sub>1</sub> Tube insertion length (mm)	F <sub>2</sub> Tube insertion length (mm)	D <sub>1</sub> (mm)	D <sub>2</sub> (mm)	W (mm)	Min. inner diameter (mm)	Effective cross-sectional area (mm <sup>2</sup> )	Weight (g)
EUC1/4	1/4	1/4	32.8	16.4	6.0	15	15	13.0	13.0	12.5	5.0	12.5	6.0
EUC5/16	5/16	5/16	35.6	17.8	7.0	16	16	15.0	15.0	14.5	7.0	28.0	8.0
EUC3/8	3/8	3/8	41.2	20.6	8.5	19	19	18.0	18.0	17.5	9.0	35.0	14.0
EUC1/2	1/2	1/2	43.9	22.0	10.3	21	21	21.5	21.5	21.0	11.0	65.0	19.0

☞ The inch size type is not plated.

Tube

Clean tube

Processed tube

PushOne fitting

QuickSeal fitting

Clean fitting/ Chemifit

Bamboo-shoot fitting

Control switch/ Detachable series

Jig/Tool/ Accessory

Technical information

Reference

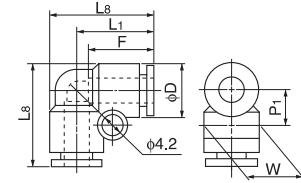


## 90 degree union elbow

### ●Millimeter size type



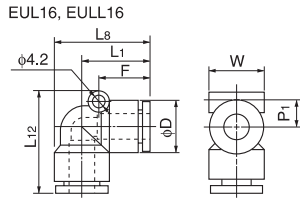
Product number	Applicable tube outer diameter (mm)	L <sub>1</sub> (mm)	L <sub>8</sub> (mm)	P <sub>1</sub> (mm)	F Tube insertion length (mm)	D (mm)	W (mm)	Min. inner diameter (mm)	Effective cross-sectional area (mm <sup>2</sup> )	Weight (g)
EUL4	4	17.2	22.1	6.9	13	9.8	9.7	3.0	3.5	4.0
EUL6	6	18.5	24.8	8.3	15	12.6	12.5	5.0	9.5	6.0
EUL8	8	20.7	28.0	9.3	16	14.6	14.5	7.0	19.5	9.0
EUL10	10	24.7	33.4	10.8	19	17.5	17.5	9.0	32.5	15.0
EUL12	12	26.3	36.3	12.1	20	20.0	20.0	11.0	45.5	20.0



Product number	Applicable tube outer diameter (mm)	L <sub>1</sub> (mm)	L <sub>8</sub> (mm)	L <sub>12</sub> (mm)	P <sub>1</sub> (mm)	F Tube insertion length (mm)	D (mm)	W (mm)	Min. inner diameter (mm)	Effective cross-sectional area (mm <sup>2</sup> )	Weight (g)
EUL16	16	34.9	48.7	50.8	12.9	27	28.0	28.0	13.0	97.5	50.0
EULL16	16	34.9	48.7	61.5	12.9	27	28.0	27.5	13.0	96.5	56.0

\*EUL16 and EULL16 have a different screw hole position.  
\*EULL16 is made to order.

### ●Inch size type



Product number	Applicable tube outer diameter (inch)	L <sub>1</sub> (mm)	L <sub>8</sub> (mm)	P <sub>1</sub> (mm)	F Tube insertion length (mm)	D (mm)	W (mm)	Min. inner diameter (mm)	Effective cross-sectional area (mm <sup>2</sup> )	Weight (g)
EUL1/4	1/4	18.1	24.4	8.3	15	13.0	12.5	5.0	12.0	6.0
EUL5/16	5/16	20.6	27.9	9.3	16	15.0	14.5	7.0	20.0	9.0
EUL3/8	3/8	24.4	33.2	10.8	19	18.0	17.5	9.0	27.0	15.0
EUL1/2	1/2	27.5	38.0	12.6	21	21.5	21.0	11.0	54.5	20.0

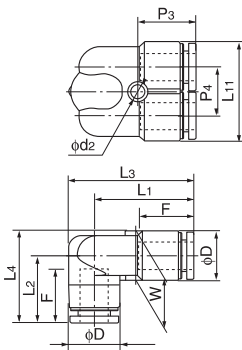
☞ The inch size type is not plated.

## 90 degree branch elbow

### ●Millimeter size type

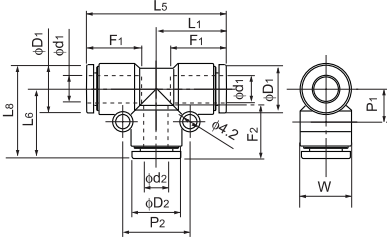


Product number	Applicable tube outer diameter (mm)	L <sub>1</sub> (mm)	L <sub>2</sub> (mm)	L <sub>3</sub> (mm)	L <sub>4</sub> (mm)	L <sub>11</sub> (mm)	F Tube insertion length (mm)	P <sub>3</sub> (mm)	P <sub>4</sub> (mm)	W (mm)	D (mm)	d <sub>2</sub> (mm)	Min. inner diameter (mm)	Effective cross-sectional area (mm <sup>2</sup> )	Weight (g)
EULY6	6	25.6	18.0	31.9	24.3	24.8	15	14.8	12.2	12.6	12.6	4.2	5.0	—	10.0
EULY8	8	28.2	19.6	35.5	26.9	28.8	16	16.4	14.2	14.6	14.6	4.2	7.0	—	14.0
EULY10	10	31.3	22.6	40.0	31.3	35.0	19	18.4	17.5	17.5	17.5	4.2	9.0	—	23.0



## Union tee

### ●Millimeter size type



Product number	d1 Applicable tube outer diameter (mm)	d2 Applicable tube outer diameter (mm)	L1 (mm)	L5 (mm)	L6 (mm)	L8 (mm)	F1 Tube insertion length (mm)	F2 Tube insertion length (mm)	P1 (mm)	P2 (mm)	D1 (mm)	D2 (mm)	W (mm)	Min. inner diameter (mm)	Effective cross- sectional area (mm <sup>2</sup> )	Weight (g)
EUT4	4	4	17.2	34.4	17.2	22.1	13	13	6.9	14.0	9.8	9.8	9.7	3.0	3.5	6.0
EUT4-6	4	6	17.7	35.4	18.0	22.9	13	15	6.8	17.0	9.8	12.6	12.5	3.0	2.5	8.0
EUT6	6	6	18.5	37.0	18.5	24.8	15	15	8.3	17.0	12.6	12.6	12.5	5.0	4.5	9.0
EUT6-8	6	8	19.5	39.0	20.4	26.7	15	16	8.2	19.0	12.6	14.6	14.5	5.0	15.5	11.0
EUT8	8	8	20.7	41.4	20.7	28.0	16	16	9.3	19.0	14.6	14.6	14.5	7.0	19.5	13.0
EUT8-10	8	10	21.7	43.4	24.4	31.7	16	19	9.2	22.0	14.6	17.5	17.5	7.0	21.0	18.0
EUT10	10	10	24.7	49.3	24.7	33.4	19	19	10.8	22.0	17.5	17.5	17.5	9.0	32.5	22.0
EUT10-12	10	12	25.6	51.1	26.3	35.1	19	20	10.8	24.0	17.5	20.0	20.0	9.0	27.0	26.0
EUT12	12	12	26.3	52.6	26.3	36.3	20	20	12.1	24.0	20.0	20.0	20.0	11.0	45.5	29.0
EUT16	16	16	34.9	69.8	34.9	48.7	27	27	15.9	31.7	28.0	28.0	27.5	13.0	97.0	73.0

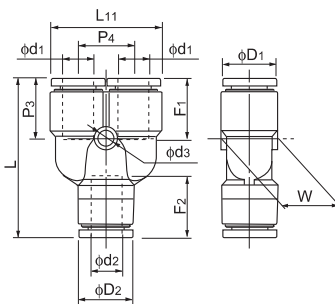
### ●Inch size type

Product number	d1 Applicable tube outer diameter (inch)	d2 Applicable tube outer diameter (inch)	L1 (mm)	L5 (mm)	L6 (mm)	L8 (mm)	F1 Tube insertion length (mm)	F2 Tube insertion length (mm)	P1 (mm)	P2 (mm)	D1 (mm)	D2 (mm)	W (mm)	Min. inner diameter (mm)	Effective cross- sectional area (mm <sup>2</sup> )	Weight (g)
EUT1/4	1/4	1/4	18.1	36.2	18.1	24.4	15	15	8.3	17.0	13.0	13.0	12.5	5.0	12.0	9.0
EUT5/16	5/16	5/16	20.6	41.2	20.6	27.9	16	16	9.3	19.0	15.0	15.0	14.5	7.0	20.0	13.0
EUT3/8	3/8	3/8	24.4	48.8	24.4	33.2	19	19	10.8	22.0	18.0	18.0	17.5	9.0	27.0	22.0
EUT1/2	1/2	1/2	27.5	54.9	27.5	38.0	21	21	12.6	25.0	21.5	21.5	21.0	11.0	54.5	29.0

☞ The inch size type is not plated.

## Y union

### ●Millimeter size type



Product number	d1 Applicable tube outer diameter (mm)	d2 Applicable tube outer diameter (mm)	L (mm)	L11 (mm)	F1 Tube insertion length (mm)	F2 Tube insertion length (mm)	P3 (mm)	P4 (mm)	W (mm)	D1 (mm)	D2 (mm)	d3 (mm)	Min. inner diameter (mm)	Effective cross- sectional area (mm <sup>2</sup> )	Weight (g)
EYB4-4	4	4	33.8	20.8	13	13	13.5	11.0	9.8	9.8	9.8	3.2	3.0	3.0	6.0
EYB4-6	4	6	34.2	20.8	13	15	13.5	11.0	12.5	9.8	12.6	3.2	3.0	2.5	8.0
EYB6-6	6	6	37.5	24.8	15	15	14.7	12.2	12.5	12.6	12.6	4.2	5.0	8.0	10.0
EYB6-8	6	8	39.2	24.8	15	16	14.7	12.2	14.5	12.5	14.6	4.2	5.0	17.0	12.0
EYB8-8	8	8	42.9	28.8	16	16	16.4	14.2	14.6	14.6	14.6	4.2	7.0	18.0	14.0
EYB8-10	8	10	44.8	28.8	16	19	16.4	14.2	17.5	14.6	17.5	4.2	7.0	22.5	19.0
EYB10-10	10	10	48.3	35.0	19	19	18.4	17.5	17.5	17.5	17.5	4.2	9.0	27.0	24.0
EYB10-12	10	12	49.4	35.0	19	20	18.4	17.5	20.0	17.5	20.0	4.2	9.0	30.0	29.0
EYB12-12	12	12	54.0	40.0	20	20	20.3	20.0	20.0	20.0	20.0	4.2	11.0	38.5	33.0

### ●Inch size type

Product number	d1 Applicable tube outer diameter (inch)	d2 Applicable tube outer diameter (inch)	L (mm)	L11 (mm)	F1 Tube insertion length (mm)	F2 Tube insertion length (mm)	P3 (mm)	P4 (mm)	W (mm)	D1 (mm)	D2 (mm)	d3 (mm)	Min. inner diameter (mm)	Effective cross- sectional area (mm <sup>2</sup> )	Weight (g)
EYB1/4	1/4	1/4	36.7	24.7	15	15	14.4	12.2	12.5	13.0	13.0	4.2	5.0	10.5	10.0
EYB5/16	5/16	5/16	42.7	28.7	16	16	16.3	14.2	14.5	15.0	15.0	4.2	7.0	19.5	14.0
EYB3/8	3/8	3/8	47.8	35.0	19	19	18.1	17.5	17.5	18.0	18.0	4.2	9.0	24.0	24.0
EYB1/2	1/2	1/2	55.8	42.0	21	21	20.5	21.0	21.0	21.5	21.5	4.2	11.0	46.5	33.0

☞ The inch size type is not plated.

Tube

Clean tube

Processed  
tube

PushOne  
fitting

QuickSeal  
fitting

Clean fitting/  
Chemifit

Bamboo-  
shoot fitting

Control switch/  
Detachable  
series

Jig/Tool/  
Accessory

Technical  
information

Reference

Double Y union

Tube

Clean tube

Processed tube

PushOne fitting

QuickSeal fitting

Clean fitting/ Chemifit

Bamboo-shoot fitting

Control switch/ Detachable series

Jig/Tool/ Accessory

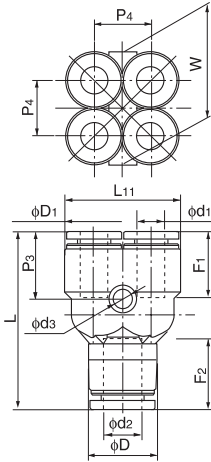
Technical information

Reference

●Millimeter size type



Product number	d1 Applicable tube outer diameter (mm)	d2 Applicable tube outer diameter (mm)	L (mm)	L11 (mm)	F1 Tube insertion length (mm)	F2 Tube insertion length (mm)	P3 (mm)	P4 (mm)	W (mm)	D1 (mm)	D (mm)	ds (mm)	Min. inner diameter (mm)	Effective cross-sectional area (mm <sup>2</sup> )	Weight (g)
EUWY4-6	4	6	34.2	19.8	13	15	13.4	10.0	19.8	9.8	12.6	3.2	3.5	—	10.0
EUWY6-8	6	8	39.2	24.8	15	16	14.8	12.2	24.8	12.6	14.6	4.2	5.0	—	16.0

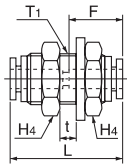


Panel touch connector

●Millimeter size type



Product number	Applicable tube outer diameter (mm)	L (mm)	F Tube insertion length (mm)	t Max. panel thickness (mm)	H4 (mm)	T1 Recommended panel hole diameter (mm)	Washer outer diameter (mm)	Washer thickness (mm)	Thread length (mm)	Min. inner diameter (mm)	Effective cross-sectional area (mm <sup>2</sup> )	Weight (g)
EPC4	4	31.8	13	8.0	17.0	13	20	2.0	20	3.0	3.5	5.0
EPC6	6	33.6	15	9.5	19.0	15	24	2.5	22	5.0	12.5	7.0
EPC8	8	35.8	16	10.5	22.0	17	28	2.5	23	7.0	28.0	9.0
EPC10	10	41.7	19	14.0	27.0	21	34	3.0	27	9.0	45.0	16.0
EPC12	12	43.6	20	16.0	30.0	23	37	3.0	29	11.0	67.0	67.0

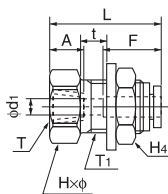


Internal panel touch connector

●Millimeter size type

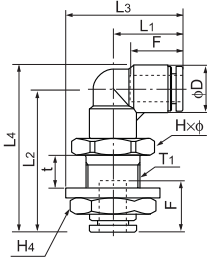


Product number	Applicable tube outer diameter (mm)	T Thread size (Rc)	L (mm)	A (mm)	F Tube insertion length (mm)	Hxφ Width across flat (mm)	H4 (mm)	t Max. panel thickness (mm)	T1 Recommended panel hole diameter (mm)	d1 (mm)	Washer outer diameter (mm)	Washer thickness (mm)	Min. inner diameter (mm)	Effective cross-sectional area (mm <sup>2</sup> )	Weight (g)
EPFC4-PT1/8	4	Rc1/8	27.9	8.7	13	17.0x18.5	17.0	8.0	13	3.0	20	2.0	3.0	4.0	22.0
EPFC6-PT1/8	6	Rc1/8	29.8	8.7	15	19.0x21.0	19.0	9.0	15	5.0	24	2.5	5.0	10.5	44.0
EPFC6-PT1/4	6	Rc1/4	35.3	13.0	15	19.0x21.0	19.0	9.0	15	5.0	24	2.5	5.0	10.5	50.0
EPFC8-PT1/4	8	Rc1/4	34.4	13.0	16	22.0x24.5	22.0	10.5	17	7.0	28	2.5	7.0	25.0	64.0
EPFC8-PT3/8	8	Rc3/8	38.4	13.5	16	22.0x24.5	22.0	10.5	17	7.0	28	2.5	7.0	26.0	68.0
EPFC10-PT1/4	10	Rc1/4	40.4	13.0	19	27.0x30.0	27.0	14.0	21	9.0	34	3.0	9.0	40.0	117.0
EPFC10-PT3/8	10	Rc3/8	40.4	13.5	19	27.0x30.0	27.0	14.0	21	9.0	34	3.0	9.0	40.0	107.0
EPFC12-PT1/4	12	Rc1/4	42.3	13.0	20	30.0x33.5	30.0	16.0	23	10.5	37	3.0	10.5	45.0	147.0
EPFC12-PT3/8	12	Rc3/8	42.3	13.5	20	30.0x33.5	30.0	16.0	23	11.0	37	3.0	11.0	50.0	138.0



## 90 degree panel touch elbow

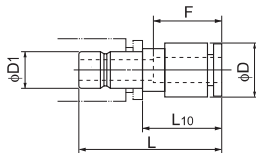
### ●Millimeter size type



Product number	Applicable tube outer diameter (mm)	L1 (mm)	L2 (mm)	L3 (mm)	L4 (mm)	F Tube insertion length (mm)	H×φ Width across flat (mm)	H4 Width across flat (mm)	t Max. panel thickness (mm)	T1 Recommended panel hole diameter (mm)	D (mm)	Washer outer diameter (mm)	Washer thickness (mm)	Min. inner diameter (mm)	Effective cross-sectional area (mm <sup>2</sup> )	Weight (g)
EPL4	4	17.2	35.6	27.7	40.5	13	17.0-18.3	17.0	7.5	13	9.8	21	2.5	3.0	—	32.0
EPL6	6	18.5	40.0	30.5	46.3	15	19.0-21.0	19.0	9.0	15	12.6	24	2.5	5.0	—	43.0
EPL8	8	20.7	43.6	34.7	47.5	16	22.0-24.5	22.0	10.0	17	14.6	28	3.0	7.0	—	62.0
EPL10	10	24.7	51.6	41.7	60.3	19	27.0-30.0	27.0	14.0	21	17.5	34	3.0	9.0	—	101.0
EPL12	12	26.3	56.0	44.8	66.0	20	30.0-33.5	30.0	16.0	23	20.0	37	3.0	10.0	—	126.0

## Reducer

### ●Millimeter size type

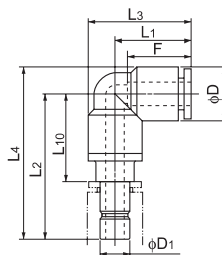


Product number	Applicable tube outer diameter (mm)	D1 Insertion part diameter (mm)	L (mm)	L10 (mm)	F Tube insertion length (mm)	D (mm)	Min. inner diameter (mm)	Effective cross-sectional area (mm <sup>2</sup> )	Weight (g)
ER4-6	4	6	30.4	13.9	13	10.0	3.0	3.5	8.0
ER4-8	4	8	30.9	13.9	13	10.0	3.0	3.5	11.0
ER6-8	6	8	31.8	14.8	15	12.0	5.0	10.5	11.0
ER6-10	6	10	34.3	15.8	15	12.0	5.0	10.5	17.0
ER6-12	6	12	35.8	15.8	15	13.0	5.0	10.5	25.0
ER8-10	8	10	34.9	16.4	16	13.9	7.0	28.0	15.0
ER8-12	8	12	36.4	16.4	16	13.9	7.0	28.0	22.0
ER10-12	10	12	41.4	21.4	19	16.9	7.0	45.0	23.0

⚠ Caution: Once a reducer is inserted into a PushOne part, the part cannot be used to connect a tube.

## Adopter elbow

### ●Millimeter size type



Product number	Applicable tube outer diameter (mm)	D1 Insertion part diameter (mm)	L1 (mm)	L2 (mm)	L3 (mm)	L4 (mm)	L10 (mm)	F Tube insertion length (mm)	D (mm)	Min. inner diameter (mm)	Effective cross-sectional area (mm <sup>2</sup> )	Weight (g)
EAL4	4	4	17.2	30.7	22.1	35.6	14.7	13	9.8	3.0	4.0	6.0
EAL6	6	6	18.5	34.2	24.4	40.5	17.7	15	12.6	4.5	12.0	10.0
EAL8	8	8	20.7	35.7	27.6	43.0	18.7	16	14.6	6.0	20.0	14.0
EAL10	10	10	24.7	41.2	33.0	50.0	22.7	19	17.5	8.0	35.0	22.0
EAL12	12	12	26.3	45.2	35.7	55.2	25.2	20	20.0	10.0	43.0	30.0

⚠ Caution: Once an adaptor elbow is inserted into a PushOne part, the part cannot be used to connect a tube.

Tube

Clean tube

Processed tube

PushOne fitting

QuickSeal fitting

Clean fitting/ Chemifit

Bamboo-shoot fitting

Control switch/ Detachable series

Jig/Tool/ Accessory

Technical information

Reference

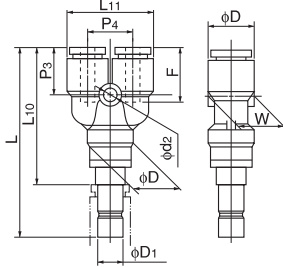
## Y plug

### ●Millimeter size type



Product number	Applicable tube outer diameter (mm)	D <sub>1</sub> Insertion part diameter (mm)	L (mm)	L <sub>10</sub> (mm)	L <sub>11</sub> (mm)	F Tube insertion length (mm)	P <sub>3</sub> (mm)	P <sub>4</sub> (mm)	W (mm)	D (mm)	d <sub>2</sub> (mm)	Min. inner diameter (mm)	Effective cross-sectional area (mm <sup>2</sup> )	Weight (g)
EYA4-4	4	4	48.4	32.4	20.8	13	13.5	11.0	9.8	9.8	3.2	3.0	3.5	8.0
EYA6-6	6	6	52.8	36.3	24.8	15	14.7	12.2	12.6	12.6	4.2	4.5	9.0	14.0
EYA8-8	8	8	56.4	39.4	28.8	16	16.4	14.2	14.6	14.6	4.2	6.0	18.0	19.0
EYA10-10	10	10	63.9	45.4	35.0	19	18.4	17.5	17.5	17.5	4.2	8.0	28.0	31.0
EYA12-12	12	12	70.3	50.3	40.0	20	20.3	20.0	20.0	20.0	4.2	10.0	40.0	42.0

⚠ Caution: Once a Y plug elbow is inserted into a PushOne part, the part cannot be used to connect a tube.

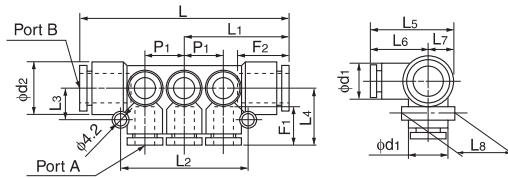


## Manifold A type

### ●Millimeter size type



Product number	Applicable tube outer diameter (mm)		A Number of ports	L (mm)	L <sub>1</sub> (mm)	L <sub>2</sub> (mm)	L <sub>3</sub> (mm)	L <sub>4</sub> (mm)	L <sub>5</sub> (mm)	L <sub>6</sub> (mm)	L <sub>7</sub> (mm)	L <sub>8</sub> (mm)	F <sub>1</sub> Tube insertion length (mm)	F <sub>2</sub> Tube insertion length (mm)	P <sub>1</sub> (mm)	d <sub>1</sub> (mm)	d <sub>2</sub> (mm)	Effective cross-sectional area (mm <sup>2</sup> )	Weight (g)
	Port A	Port B																	
EMA4-8-6	4	8	6	61.0	30.5	36.0	10.0	18.2	27.5	18.2	9.3	18.5	13	16	10.6	9.7	14.5	—	20.0
EMA4-8-10	4	8	10	82.2	41.1	57.2	10.0	18.2	27.5	18.2	9.3	18.5	13	16	10.6	9.7	14.5	—	33.0
EMA6-10-6	6	10	6	73.7	36.9	44.0	11.5	20.2	29.5	20.2	9.3	18.5	15	19	13.0	12.5	17.5	—	37.0
EMA6-10-10	6	10	10	99.7	49.9	70.0	11.5	20.2	29.5	20.2	9.3	18.5	15	19	13.0	12.5	17.5	—	54.0
EMA8-12-6	8	12	6	83.2	41.6	51.0	12.5	22.1	32.6	22.1	10.5	21.0	16	20	15.5	14.5	20.0	—	50.0
EMA8-12-10	8	12	10	114.2	57.1	82.0	12.5	22.1	32.6	22.1	10.5	21.0	16	20	15.5	14.5	20.0	—	68.0

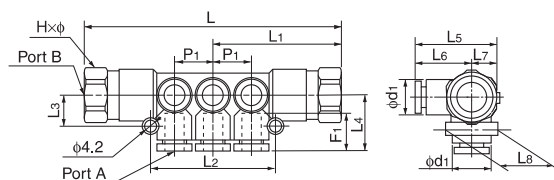


## Manifold B type

### ●Millimeter size type



Product number	Applicable tube outer diameter (mm)		Thread size (Rc)	A Number of ports	L (mm)	L <sub>1</sub> (mm)	L <sub>2</sub> (mm)	L <sub>3</sub> (mm)	L <sub>4</sub> (mm)	L <sub>5</sub> (mm)	L <sub>6</sub> (mm)	L <sub>7</sub> (mm)	L <sub>8</sub> (mm)	F <sub>1</sub> Tube insertion length (mm)	P <sub>1</sub> (mm)	d <sub>1</sub> (mm)	Hxφ Width across flat (mm)	Effective cross-sectional area (mm <sup>2</sup> )	Weight (g)
	Port A	Port B																	
EMB4-1/4-6	4	Rc1/4	6	84.0	42.0	36.0	10.0	18.2	27.5	18.2	9.3	18.5	13	10.6	9.7	17.0x18.5	—	58.0	
EMB4-1/4-10	4	Rc1/4	10	105.2	52.6	57.2	10.0	18.2	27.5	18.2	9.3	18.5	13	10.6	9.7	17.0x18.5	—	67.0	
EMB6-1/4-6	6	Rc1/4	6	96.4	48.2	44.0	11.5	20.2	29.5	20.2	9.3	18.5	15	13.0	12.5	17.0x18.5	—	79.0	
EMB6-1/4-10	6	Rc1/4	10	122.4	61.2	70.0	11.5	20.2	29.5	20.2	9.3	18.5	15	13.0	12.5	17.0x18.5	—	96.0	
EMB8-3/8-6	8	Rc3/8	6	105.6	52.8	51.0	12.5	22.1	32.6	22.1	10.5	21.0	16	15.5	14.5	19.0x21.0	—	92.0	
EMB8-3/8-10	8	Rc3/8	10	136.6	68.3	82.0	12.5	22.1	32.6	22.1	10.5	21.0	16	15.5	14.5	19.0x21.0	—	117.0	



Tube

Clean tube

Processed tube

PushOne fitting

QuickSeal fitting

Clean fitting/Chemifit

Bamboo-shoot fitting

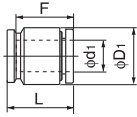
Control switch/Detachable series

Jig/Tool/Accessory

Technical information

Reference

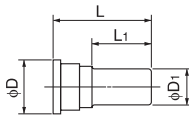
## Tube cap



### ●Millimeter size type

Product number	d <sub>1</sub> Applicable tube outer diameter (mm)	D <sub>1</sub> (mm)	F Tube insertion length (mm)	L (mm)	Weight (g)
ECC4	4	9.8	13	15.0	2.0
ECC6	6	12.6	15	16.9	3.0
ECC8	8	14.6	16	17.9	4.0
ECC10	10	17.5	19	21.7	6.0
ECC12	12	20.0	20	22.6	8.0

## Blank plug



### ●Millimeter size type

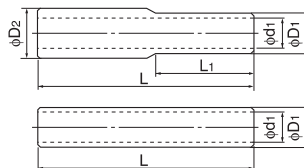
Product number	D <sub>1</sub> Insertion part diameter (mm)	L (mm)	L <sub>1</sub> (mm)	D (mm)	Weight (g)
BC4	4	28.0	15.5	7.7	0.75
BC6	6	28.0	16.0	9.7	1.2
BC8	8	29.0	16.0	11.7	1.7
BC10	10	32.0	17.7	14.0	2.5
BC12	12	34.0	20.4	16.0	3.8

### ●Inch size type

Product number	D <sub>1</sub> Insertion part diameter (inch)	L (mm)	L <sub>1</sub> (mm)	D (mm)	Weight (g)
BC1/4	1/4	28.0	16.0	9.7	1.2
BC3/8	3/8	32.0	17.7	14.0	2.5
BC1/2	1/2	34.0	20.4	16.0	3.8

Size 5/16 is shared with BC8.

## Nipple



### ●Millimeter size type

Product number	D <sub>1</sub> Insertion part diameter (mm)	D <sub>2</sub> Insertion part diameter (mm)	d <sub>1</sub> (mm)	L (mm)	L <sub>1</sub> (mm)	Weight (g)
EN4	4	—	2.5	37.0	—	1.0
EN4-6	4	6	2.5	38.0	18.5	1.0
EN6	6	—	4.0	39.0	—	1.0
EN6-8	6	8	4.0	41.0	19.5	1.0
EN8	8	—	6.0	43.0	—	1.0
EN8-10	8	10	6.0	46.0	21.5	2.0
EN10	10	—	7.5	49.0	—	2.0
EN10-12	10	12	7.5	50.5	24.5	3.0
EN12	12	—	9.0	52.0	—	3.0

Tube

Clean tube

Processed tube

PushOne fitting

QuickSeal fitting

Clean fitting/  
Chemifit

Bamboo-  
shoot fitting

Control switch/  
Detachable series

Jig/Tool/  
Accessory

Technical information

Reference

## PushOne® Series

## PushOne® E Series Mini type

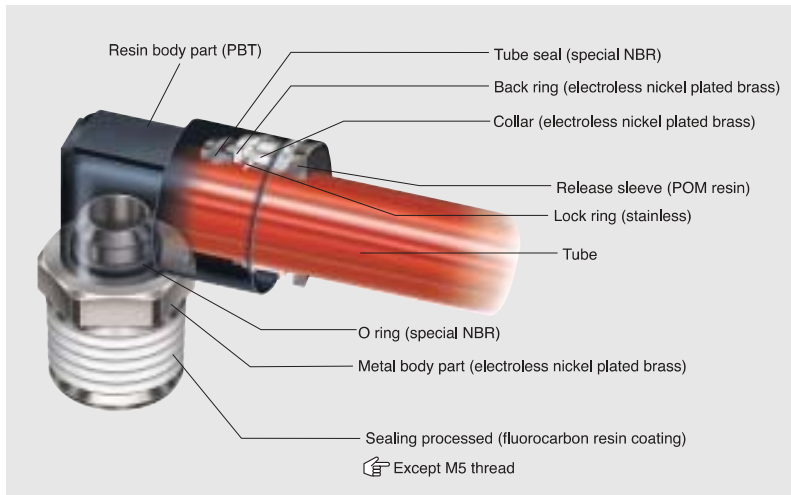
## PushOne® fittings for general air pressure

## Features

- PushOne® connection of tube  
The tubes can be connected without using a jig or tools
- Electroless nickel plated  
Preventing degradation of surface and dissolution of copper ions into fluid
- Compact body  
Suitable for narrow piping or compact design equipment
- Sealing-processed R thread.  
Sealing tape is not required.



## Cross-sectional structure diagram



## Operating fluid, working temperature range

Operating fluid	Working temperature range
Air	-20°C~+80°C

See "Combination List of Tube and Fitting" on page 8.

## Pressure condition

**Maximum working pressure:** 1.0MPa  
**Negative pressure performance:** -99.975kPa

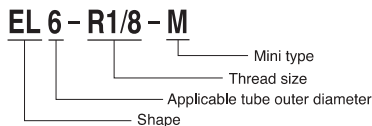
## Handling instructions

**Caution** When the working conditions of tubes and fittings differ, use them under the lower specified conditions.

**Caution** Do not bend the pipe sharply near the tube insertion port of the fitting. Keep the tube straight for twice as long as the tube diameter from the insertion port.

See page 34 for the common handling instructions for tube fittings.






## Product number example



## Size comparison of mini types



## Applicable tube

Polyurethane tube	Nylon tube	Antistatic tube <sup>*1</sup>	Polyolefine resin tube <sup>*2</sup>	Fluorocarbon resin tube <sup>*2</sup>
 U2***P.12 U1***P.13	 N2***P.15 N5***P.16 N1***P.17	 UE***P.23	 PL***P.26 PN***P.27	 TA***P.28 TP***P.29

(\*1) When the PushOne E series of the Mini type is used with a UE tube, choose a metal body type including a connector and a hexagonal socket to maintain conductivity between the tube and the fittings.

(\*2) Combinatory use of PL, PN, TA or TP tube and PushOne E series of the Mini type mixes general and clean type performances. When using them in a clean environment, pay attention to the clean level that could be lowered.

## Allied products and product introduction

## Speed controller



P.144

## Off tool



P.169

## Reference

Instruction manual.....P.178  
Effective cross-sectional area.....P.176  
Negative-pressure performance list.....P.177

# PushOne® E Series Mini type

## Shape list

<p><b>Connector</b> EC*-M</p>  <p>P.68</p>	<p><b>Hexagon socket connector</b> EC*-A-M</p>  <p>P.68</p>	<p><b>90 degree elbow</b> EL*-M</p>  <p>P.68</p>	<p><b>90 degree long elbow</b> ELL*-M</p>  <p>P.69</p>	<p><b>Tee</b> ET*-M</p>  <p>P.69</p>
<p><b>Service tee</b> EST*-M</p>  <p>P.69</p>	<p><b>Y joint</b> EY*-M</p>  <p>P.70</p>	<p><b>Union connector</b> EUC*-M</p>  <p>P.70</p>	<p><b>90 degree union elbow</b> EUL*-M</p>  <p>P.70</p>	<p><b>Union tee</b> EUT*-M</p>  <p>P.71</p>
<p><b>Y union</b> EYB*-M</p>  <p>P.71</p>	<p><b>Blank plug</b> BC</p>  <p>P.65</p>	<p><b>Nipple</b> EN</p>  <p>P.65</p>		

Tube

Clean tube

Processed tube

PushOne fitting

QuickSeal fitting

Clean fitting/  
Chemifit

Bamboo-  
shoot fitting

Control switch/  
Detachable series

Jig/Tool/  
Accessory

Technical information

Reference



Connector

Tube

Clean tube

Processed tube

PushOne fitting

QuickSeal fitting

Clean fitting/Chemifit

Bamboo-shoot fitting

Control switch/Detachable series

Jig/Tool/Accessory

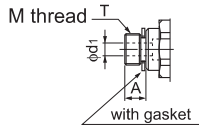
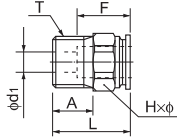
Technical information

Reference

●Millimeter size type



Product number	Applicable tube outer diameter (mm)	T Thread size (M,R)	L (mm)	A (mm)	F Tube insertion length (mm)	H×φ Width across flat (mm)	d1 Min. inner diameter (mm)	Effective cross-sectional area (mm <sup>2</sup> )	Weight (g)
EC3-M3-M	3	M3×0.5	13.0	3.0	9	5.5×6.0	1.5	2.0	2.0
EC3-M5-M	3	M5×0.8	14.0	3.5	9	7.0×7.7	2.0	2.5	3.2
EC4-M3-M	4	M3×0.5	14.2	3.0	10	8.0×8.8	1.5	2.0	4.0
EC4-M5-M	4	M5×0.8	14.2	3.5	10	8.0×8.8	2.5	3.5	4.0
EC4-R1/8-M	4	R1/8	14.0	7.3	10	10.0×11.0	2.5	4.0	5.4
EC6-M5-M	6	M5×0.8	15.2	3.5	11	10.0×11.0	2.5	4.5	3.6
EC6-R1/8-M	6	R1/8	16.7	7.3	11	10.0×11.0	4.0	9.0	5.6

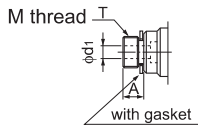
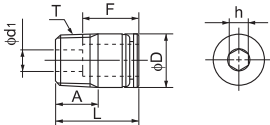


Hexagon socket connector

●Millimeter size type



Product number	Applicable tube outer diameter (mm)	T Thread size (M,R)	L (mm)	A (mm)	F Tube insertion length (mm)	h Width across flat (mm)	D (mm)	d1 Min. inner diameter (mm)	Effective cross-sectional area (mm <sup>2</sup> )	Weight (g)
EC3-M3A-M	3	M3×0.5	13.0	3.0	9	1.5	5.5	1.5	2.0	2.0
EC3-M5A-M	3	M5×0.8	14.0	3.5	9	2.0	7.0	2.0	2.5	3.2
EC4-M3A-M	4	M3×0.5	14.0	3.0	10	1.5	7.8	1.5	2.0	4.0
EC4-M5A-M	4	M5×0.8	14.0	3.5	10	2.5	7.8	2.5	3.5	4.0
EC4-R1/8A-M	4	R1/8	13.8	7.3	10	2.5	10.0	2.5	4.0	5.4
EC6-M5A-M	6	M5×0.8	15.2	3.5	11	2.5	9.8	2.5	4.5	3.6
EC6-R1/8A-M	6	R1/8	16.7	7.3	11	4.0	10.0	4.0	9.0	5.6

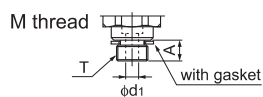
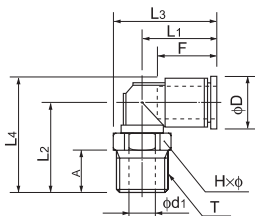


90 degree elbow

●Millimeter size type



Product number	Applicable tube outer diameter (mm)	T Thread size (M,R)	L1 (mm)	L2 (mm)	L3 (mm)	L4 (mm)	A (mm)	F Tube insertion length (mm)	H×φ Width across flat (mm)	D (mm)	d1 (mm)	Min. inner diameter (mm)	Effective cross-sectional area (mm <sup>2</sup> )	Weight (g)
EL3-M3-M	3	M3×0.5	10.7	12.0	13.7	15.0	3.0	9	5.5×6.0	6.3	1.5	1.5	1.5	1.2
EL3-M5-M	3	M5×0.8	10.7	13.0	14.5	16.0	3.5	9	7.0×7.7	6.3	2.5	1.5	1.5	2.3
EL4-M3-M	4	M3×0.5	12.0	12.5	16.4	16.4	3.0	10	8.0×8.8	8.0	1.5	1.5	2.0	2.3
EL4-M5-M	4	M5×0.8	12.0	13.0	16.4	16.9	3.5	10	8.0×8.8	8.0	2.5	2.5	3.5	2.8
EL4-R1/8-M	4	R1/8	12.0	16.0	17.5	19.9	8.0	10	10.0×11.0	8.0	5.0	3.0	4.0	6.4
EL6-M5-M	6	M5×0.8	13.7	14.0	18.1	18.9	3.5	11	8.0×8.8	10.2	2.5	2.5	4.5	3.4
EL6-R1/8-M	6	R1/8	13.7	17.0	19.2	21.9	8.0	11	10.0×11.0	10.2	5.0	4.0	8.0	6.9

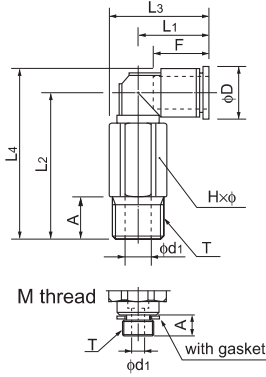


## 90 degree long elbow

### ●Millimeter size type



Product number	Applicable tube outer diameter (mm)	T Thread size (M,R)	L1 (mm)	L2 (mm)	L3 (mm)	L4 (mm)	A (mm)	F Tube insertion length (mm)	H×φ Width across flat (mm)	D (mm)	d1 (mm)	Min. inner diameter (mm)	Effective cross-sectional area (mm <sup>2</sup> )	Weight (g)
ELL3-M3-M	3	M3×0.5	10.7	20.0	13.7	23.0	3.0	9	5.5×6.0	6.3	1.5	1.5	1.5	9.7
ELL3-M5-M	3	M5×0.8	10.7	21.0	14.5	24.0	3.5	9	7.0×7.7	6.3	2.5	1.5	1.5	10.8
ELL4-M3-M	4	M3×0.5	12.0	24.5	16.4	28.4	3.0	10	8.0×8.8	8.0	1.5	1.5	2.0	10.8
ELL4-M5-M	4	M5×0.8	12.0	25.0	16.4	28.9	3.5	10	8.0×8.8	8.0	2.5	2.5	3.5	11.3
ELL4-R1/8-M	4	R1/8	12.0	28.0	17.5	31.9	8.0	10	10.0×11.0	8.0	5.0	3.0	4.0	14.9
ELL6-M5-M	6	M5×0.8	13.7	26.0	18.1	30.9	3.5	11	8.0×8.8	10.2	2.5	2.5	4.5	11.9
ELL6-R1/8-M	6	R1/8	13.7	29.0	19.2	33.9	8.0	11	10.0×11.0	10.2	5.0	4.0	8.0	15.4

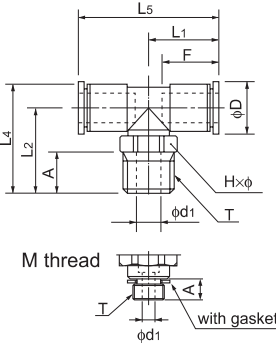


## Tee

### ●Millimeter size type



Product number	Applicable tube outer diameter (mm)	T Thread size (M,R)	L1 (mm)	L2 (mm)	L4 (mm)	L5 (mm)	A (mm)	F Tube insertion length (mm)	H×φ Width across flat (mm)	D (mm)	d1 (mm)	Min. inner diameter (mm)	Effective cross-sectional area (mm <sup>2</sup> )	Weight (g)
ET3-M3-M	3	M3×0.5	10.7	12.0	15.0	21.3	3.0	9	5.5×6.0	6.3	1.5	1.5	1.5	1.5
ET3-M5-M	3	M5×0.8	10.7	13.0	16.0	21.3	3.5	9	7.0×7.7	6.3	2.5	1.5	1.5	2.6
ET4-M3-M	4	M3×0.5	12.5	12.5	16.4	25.0	3.0	10	8.0×8.8	8.0	1.5	1.5	2.0	2.8
ET4-M5-M	4	M5×0.8	12.5	13.0	16.9	25.0	3.5	10	8.0×8.8	8.0	2.5	2.5	3.5	3.3
ET4-R1/8-M	4	R1/8	12.5	16.0	19.9	25.0	8.0	10	10.0×11.0	8.0	5.0	3.0	4.0	6.9
ET6-M5-M	6	M5×0.8	14.2	14.0	18.9	28.4	3.5	11	8.0×8.8	10.2	2.5	2.5	4.5	4.3
ET6-R1/8-M	6	R1/8	14.2	17.0	21.9	28.4	8.0	11	10.0×11.0	10.2	5.0	4.0	8.0	7.9

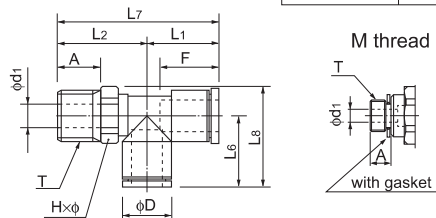


## Service tee

### ●Millimeter size type



Product number	Applicable tube outer diameter (mm)	T Thread size (M,R)	L1 (mm)	L2 (mm)	L6 (mm)	L7 (mm)	L8 (mm)	A (mm)	F Tube insertion length (mm)	H×φ Width across flat (mm)	D (mm)	d1 (mm)	Min. inner diameter (mm)	Effective cross-sectional area (mm <sup>2</sup> )	Weight (g)
EST3-M3-M	3	M3×0.5	10.7	12.0	10.7	22.7	13.7	3.0	9	5.5×6.0	6.3	1.5	1.5	1.5	1.5
EST3-M5-M	3	M5×0.8	10.7	13.0	10.7	23.7	14.6	3.5	9	7.0×7.7	6.3	2.5	1.5	1.5	2.6
EST4-M3-M	4	M3×0.5	12.5	12.5	12.5	25.0	16.9	3.0	10	8.0×8.8	8.0	1.5	1.5	2.0	2.8
EST4-M5-M	4	M5×0.8	12.5	13.0	12.5	25.5	16.9	3.5	10	8.0×8.8	8.0	2.5	2.5	3.5	3.3
EST4-R1/8-M	4	R1/8	12.5	16.0	12.5	28.5	18.0	8.0	10	10.0×11.0	8.0	5.0	3.0	4.0	6.9
EST6-M5-M	6	M5×0.8	14.2	14.0	14.2	28.2	19.1	3.5	11	8.0×8.8	10.2	2.5	2.5	4.5	4.4
EST6-R1/8-M	6	R1/8	14.2	17.0	14.2	31.2	19.7	8.0	11	10.0×11.0	10.2	5.0	4.0	8.0	7.9



Tube

Clean tube

Processed tube

PushOne fitting

QuickSeal fitting

Clean fitting/ Chemifit

Bamboo-shoot fitting

Control switch/ Detachable series

Jig/Tool/ Accessory

Technical information

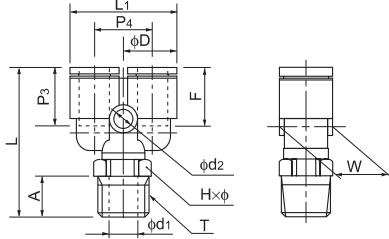
Reference

Y joint

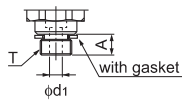
●Millimeter size type



Product number	Applicable tube outer diameter (mm)	T Thread size (M,R)	L (mm)	L <sub>1</sub> (mm)	A (mm)	F Tube insertion length (mm)	H±φ Width across flat (mm)	P <sub>3</sub> (mm)	P <sub>4</sub> (mm)	W (mm)	D (mm)	d <sub>1</sub> (mm)	d <sub>2</sub> (mm)	Min. inner diameter (mm)	Effective cross-sectional area (mm <sup>2</sup> )	Weight (g)
EY4-M3-M	4	M3×0.5	24.2	16.7	3.0	10	8.0×8.8	9.0	9.0	8.0	8.0	1.5	3.2	1.5	1.5	3.0
EY4-M5-M	4	M5×0.8	24.7	16.7	3.5	10	8.0×8.8	9.0	9.0	8.0	8.0	2.5	3.2	2.5	2.5	4.5
EY4-R1/8-M	4	R1/8	27.7	16.7	8.0	10	10.0×11.0	9.0	9.0	8.0	8.0	5.0	3.2	3.0	2.5	8.2
EY6-M5-M	6	M5×0.8	26.7	20.7	3.5	11	8.0×8.8	10.2	11.0	10.0	10.2	2.5	3.2	2.5	4.0	4.7
EY6-R1/8-M	6	R1/8	29.7	20.7	8.0	11	10.0×11.0	10.2	11.0	10.0	10.2	5.0	3.2	4.0	5.0	8.2



M thread

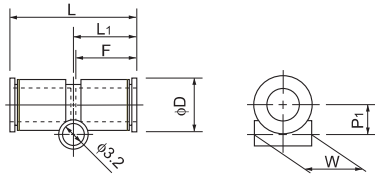


Union connector

●Millimeter size type



Product number	Applicable tube outer diameter (mm)	L <sub>1</sub> (mm)	L <sub>2</sub> (mm)	P <sub>1</sub> (mm)	F Tube insertion length (mm)	D (mm)	W (mm)	Min. inner diameter (mm)	Effective cross-sectional area (mm <sup>2</sup> )	Weight (g)
EUC3-M	3	19.4	9.7	3.6	9	6.3	6.0	2.0	2.5	0.7
EUC4-M	4	20.5	10.3	4.5	10	8.0	8.0	3.0	4.0	2.0
EUC6-M	6	22.9	11.5	5.4	11	10.2	10.0	4.0	8.5	2.2

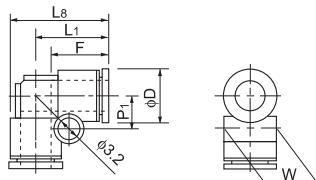


90 degree union elbow

●Millimeter size type



Product number	Applicable tube outer diameter (mm)	L <sub>1</sub> (mm)	L <sub>2</sub> (mm)	P <sub>1</sub> (mm)	F Tube insertion length (mm)	D (mm)	W (mm)	Min. inner diameter (mm)	Effective cross-sectional area (mm <sup>2</sup> )	Weight (g)
EUL3-M	3	10.7	13.7	4.1	9	6.3	6.0	2.0	2.0	0.8
EUL4-M	4	12.5	16.4	5.0	10	8.0	8.0	3.0	3.5	2.4
EUL6-M	6	14.2	19.1	6.5	11	10.2	10.0	4.0	8.0	2.4



Tube

Clean tube

Processed tube

PushOne fitting

QuickSeal fitting

Clean fitting/Chemifit

Bamboo-shoot fitting

Control switch/Detachable series

Jig/Tool/Accessory

Technical information

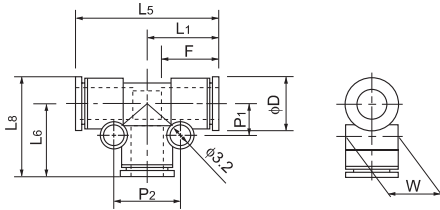
Reference

## Union tee

### ●Millimeter size type



Product number	Applicable tube outer diameter (mm)	L <sub>1</sub> (mm)	L <sub>5</sub> (mm)	L <sub>6</sub> (mm)	L <sub>8</sub> (mm)	P <sub>1</sub> (mm)	P <sub>2</sub> (mm)	F Tube insertion length (mm)	D (mm)	W (mm)	Min. inner diameter (mm)	Effective cross-sectional area (mm <sup>2</sup> )	Weight (g)
EUT3-M	3	10.7	21.4	10.7	13.7	4.1	8.2	9	6.3	6.0	2.0	2.0	1.2
EUT4-M	4	12.5	25.0	12.5	16.4	5.0	10.0	10	8.0	8.0	3.0	3.5	3.4
EUT6-M	6	14.2	28.4	14.2	19.1	6.5	13.0	11	10.2	10.0	4.0	8.0	3.5

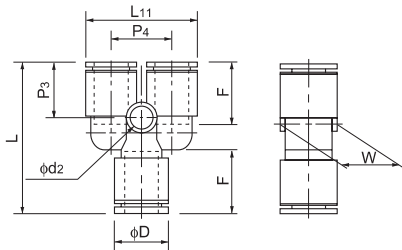


## Y union

### ●Millimeter size type



Product number	Applicable tube outer diameter (mm)	L (mm)	L <sub>11</sub> (mm)	F Tube insertion length (mm)	P <sub>3</sub> (mm)	P <sub>4</sub> (mm)	W (mm)	D (mm)	d <sub>2</sub> (mm)	Min. inner diameter (mm)	Effective cross-sectional area (mm <sup>2</sup> )	Weight (g)
EYB3-M	3	21.9	13.0	9	9.0	7.0	6.0	6.3	2.0	2.0	2.0	1.2
EYB4-M	4	24.0	16.7	10	9.0	9.0	8.0	8.0	3.2	3.0	2.0	3.4
EYB6-M	6	27.4	20.7	11	10.2	11.0	10.0	10.2	3.2	4.0	8.0	3.5



## Blank plug



See the PushOne E series (P.65) for the product number and part sizes.

## Nipple



See the PushOne E series (P.65) for the product number and part sizes.

Tube

Clean tube

Processed tube

PushOne fitting

QuickSeal fitting

Clean fitting/Chemifit

Bamboo-shoot fitting

Control switch/Detachable series

Jig/Tool/Accessory

Technical information

Reference

# PushOne® E Series Brass body type

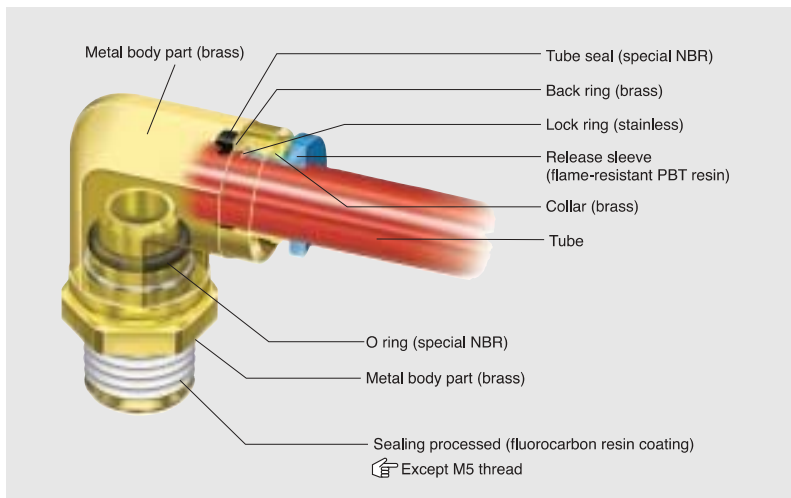
PushOne® fittings for general air pressure

## Features

- PushOne® connection of tube  
The tubes can be connected without using a jig or tools
- Electrically conductive if combined with a UE tube
- Flame-resistant resin (compliant V-0 of UL94 standard)  
Made of flame-resistant resin PBT. High self-extinguishing performance is compliant with V-0 of UL94 standard. Usable under an environment with spatters.
- Sealing-processed R thread.  
Sealing tape is not required.
- The tube direction can be adjusted even after the thread is tightened in the types such as elbow, tee, etc.



## Cross-sectional structure diagram



## Operating fluid, working temperature range

Operating fluid	Working temperature range
Air	-20°C~+80°C

ⓘ See "Combination List of Tube and Fitting" on page 8.

## Pressure condition

**Maximum working pressure:** 1.0MPa  
**Negative pressure performance:** -99.975kPa

## Handling instructions

⚠ **Caution** When the working conditions of tubes and fittings differ, use them under the lower specified conditions.

⚠ **Caution** Do not bend the pipe sharply near the tube insertion port of the fitting. Keep the tube straight for twice as long as the tube diameter from the insertion port.

ⓘ See page34 for the common handling instructions for tube fittings.

## Product number example

**MEL 6 - PT1/8**



## Applicable tube

Polyurethane tube	Nylon tube	Flame-resistant tube	Antistatic tube	Fluorocarbon resin tube
U2***P.12 U1***P.13 U5***P.14	N2***P.15 N5***P.16 N1***P.17	FS***P.20 FW***P.21 FWU***P.22	UE***P.23	TA***P.28 TP***P.29

(\*1) Combinatory use of TA or TP tube and PushOne E series of the Brass body type mixes general and clean type performances. When using them in a clean environment, pay attention to the clean level that could be lowered.

## Reference

Instruction manual	.....P.178
UL-94 standard flame test	.....P.204
Effective cross-sectional area	.....P.176
Negative-pressure performance list	.....P.177


## Allied products and product introduction

Speed controller	Ball valve	Miniature valve	Valve built-in connector	Q.D.C 101 series	Spatter cap
P.144	P.151	P.156	P.159	P.160	P.169

# PushOne® E Series Brass body type

## Shape list



 Choose a connector from the PushOne A or E series.

Tube

Clean tube

Processed tube

PushOne fitting

QuickSeal fitting

Clean fitting/  
Chemifit

Bamboo-  
shoot fitting

Control switch/  
Detachable series

Jig/Tool/  
Accessory

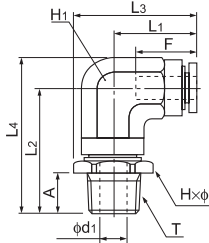
Technical information

Reference

# PushOne®E Series Brass body type

## 90 degree elbow

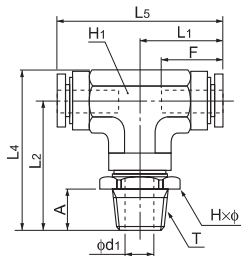
### ●Millimeter size type



Product number	Applicable tube outer diameter (mm)	T Thread size (R)	L1 (mm)	L2 (mm)	L3 (mm)	L4 (mm)	A (mm)	F Tube insertion length (mm)	H×φ Width across flat (mm)	H1 Width across flat (mm)	d1 (mm)	Min. inner diameter (mm)	Effective cross-sectional area (mm <sup>2</sup> )	Weight (g)
MEL4-PT1/8	4	R1/8	16.3	26.0	22.8	31.8	8.0	13	12.0×13.0	10.0	5.0	3.0	4.0	22.0
MEL4-PT1/4	4	R1/4	16.3	29.0	24.0	34.8	11.0	13	14.0×15.4	10.0	7.0	3.0	4.0	28.0
MEL6-PT1/8	6	R1/8	18.7	27.0	26.4	33.9	8.0	15	14.0×15.4	12.0	5.0	5.0	12.0	31.0
MEL6-PT1/4	6	R1/4	18.7	30.0	26.4	36.9	11.0	15	14.0×15.4	12.0	7.0	5.0	12.0	35.0
MEL8-PT1/8	8	R1/8	20.2	27.5	29.5	35.6	8.0	16	17.0×18.5	14.0	5.0	5.0	18.5	41.0
MEL8-PT1/4	8	R1/4	20.2	30.5	29.5	38.6	11.0	16	17.0×18.5	14.0	7.0	7.0	23.0	45.0
MEL8-PT3/8	8	R3/8	20.2	31.5	29.5	39.6	12.0	16	17.0×18.5	14.0	9.0	7.0	23.0	53.0
MEL10-PT1/8	10	R1/8	24.6	29.0	35.1	39.4	8.0	19	19.0×21.0	18.0	5.0	5.0	22.0	65.0
MEL10-PT1/4	10	R1/4	24.6	32.0	35.1	42.4	11.0	19	19.0×21.0	18.0	7.0	7.0	34.5	70.0
MEL10-PT3/8	10	R3/8	24.6	33.0	35.1	43.4	12.0	19	19.0×21.0	18.0	9.0	9.0	37.0	75.0
MEL10-PT1/2	10	R1/2	24.6	37.0	36.6	47.4	15.0	19	22.0×24.0	18.0	12.0	9.0	37.0	92.0
MEL12-PT1/4	12	R1/4	26.6	32.0	37.1	42.4	11.0	20	19.0×21.0	18.0	7.0	7.0	36.0	69.0
MEL12-PT3/8	12	R3/8	26.6	33.0	37.1	43.4	12.0	20	19.0×21.0	18.0	9.0	9.0	43.0	75.0
MEL12-PT1/2	12	R1/2	26.6	37.0	38.6	47.4	15.0	20	22.0×24.0	18.0	12.0	9.0	43.0	92.0

## Tee

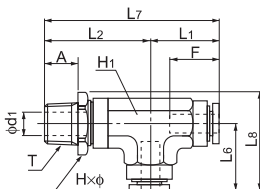
### ●Millimeter size type



Product number	Applicable tube outer diameter (mm)	T Thread size (R)	L1 (mm)	L2 (mm)	L4 (mm)	L5 (mm)	A (mm)	F Tube insertion length (mm)	H×φ Width across flat (mm)	H1 Width across flat (mm)	d1 (mm)	Min. inner diameter (mm)	Effective cross-sectional area (mm <sup>2</sup> )	Weight (g)
MET6-PT1/8	6	R1/8	18.7	27.0	33.9	37.4	8.0	15	14.0×15.4	12.0	5.0	5.0	12.0	35.0
MET6-PT1/4	6	R1/4	18.7	30.0	36.9	37.4	11.0	15	14.0×15.4	12.0	7.0	5.0	12.0	39.0
MET8-PT1/8	8	R1/8	20.2	27.5	35.6	40.4	8.0	16	17.0×18.5	14.0	5.0	5.0	18.5	46.0
MET8-PT1/4	8	R1/4	20.2	30.5	38.6	40.4	11.0	16	17.0×18.5	14.0	7.0	7.0	23.0	50.0
MET10-PT1/8	10	R1/8	24.6	29.0	39.4	49.1	8.0	19	19.0×21.0	18.0	5.0	5.0	22.0	80.0
MET10-PT1/4	10	R1/4	24.6	32.0	42.4	49.1	11.0	19	19.0×21.0	18.0	7.0	7.0	34.5	84.0
MET10-PT3/8	10	R3/8	24.6	33.0	43.4	49.1	12.0	19	19.0×21.0	18.0	9.0	9.0	37.0	90.0
MET10-PT1/2	10	R1/2	24.6	37.0	47.4	49.1	15.0	19	22.0×24.0	18.0	12.0	9.0	37.0	106.0
MET12-PT1/4	12	R1/4	26.6	32.0	42.4	53.2	11.0	20	19.0×21.0	18.0	7.0	7.0	36.0	86.0
MET12-PT3/8	12	R3/8	26.6	33.0	43.4	53.2	12.0	20	19.0×21.0	18.0	9.0	9.0	43.0	92.0
MET12-PT1/2	12	R1/2	26.6	37.0	47.4	53.2	15.0	20	22.0×24.0	18.0	12.0	9.0	43.0	108.0

## Service tee

### ●Millimeter size type



Product number	Applicable tube outer diameter (mm)	T Thread size (R)	L1 (mm)	L2 (mm)	L6 (mm)	L7 (mm)	L8 (mm)	A (mm)	F Tube insertion length (mm)	H×φ Width across flat (mm)	H1 Width across flat (mm)	d1 (mm)	Min. inner diameter (mm)	Effective cross-sectional area (mm <sup>2</sup> )	Weight (g)
MEST6-PT1/8	6	R1/8	18.7	28.1	18.7	46.8	26.4	8.0	15	14.0×15.4	12.0	5.0	5.0	12.0	37.0
MEST6-PT1/4	6	R1/4	18.7	31.1	18.7	49.8	26.4	11.0	15	14.0×15.4	12.0	7.0	5.0	12.0	41.0
MEST8-PT1/8	8	R1/8	20.2	29.1	20.2	49.3	29.5	8.0	16	17.0×18.5	14.0	5.0	5.0	18.5	50.0
MEST8-PT1/4	8	R1/4	20.2	32.1	20.2	52.3	29.5	11.0	16	17.0×18.5	14.0	7.0	7.0	23.0	54.0
MEST10-PT1/8	10	R1/8	24.6	30.1	24.6	54.7	35.1	8.0	19	19.0×21.0	18.0	5.0	5.0	22.0	82.0
MEST10-PT1/4	10	R1/4	24.6	33.1	24.6	57.7	35.1	11.0	19	19.0×21.0	18.0	7.0	7.0	34.5	86.0
MEST10-PT3/8	10	R3/8	24.6	34.1	24.6	58.7	35.1	12.0	19	19.0×21.0	18.0	9.0	9.0	37.0	92.0
MEST10-PT1/2	10	R1/2	24.6	38.1	24.6	62.7	36.6	15.0	19	22.0×24.0	18.0	12.0	9.0	37.0	108.0
MEST12-PT1/4	12	R1/4	26.6	34.1	26.6	60.7	37.1	11.0	20	19.0×21.0	18.0	7.0	7.0	36.0	90.0
MEST12-PT3/8	12	R3/8	26.6	35.1	26.6	61.7	37.1	12.0	20	19.0×21.0	18.0	9.0	9.0	43.0	95.0
MEST12-PT1/2	12	R1/2	26.6	39.1	26.6	65.7	38.6	15.0	20	22.0×24.0	18.0	12.0	9.0	43.0	112.0

Tube

Clean tube

Processed tube

PushOne fitting

QuickSeal fitting

Clean fitting/ Chemifit

Bamboo-shoot fitting

Control switch/ Detachable series

Jig/Tool/ Accessory

Technical information

Reference