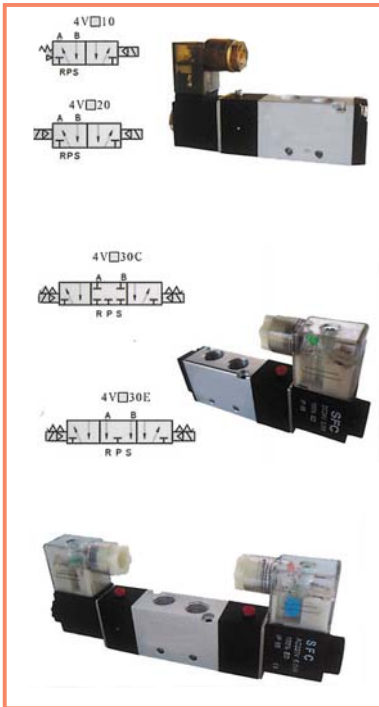
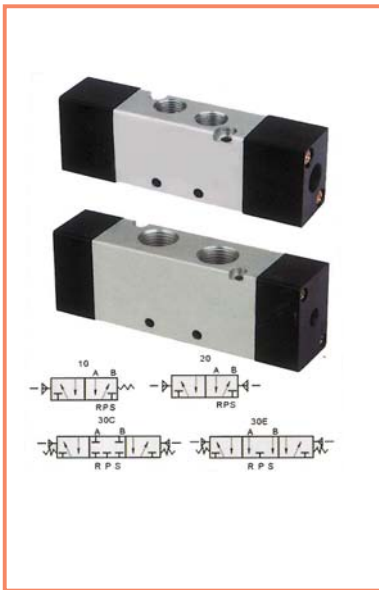


SOLENOID VALVE 4V : 2 (3) POSITION 5 PORTS



Type	Port size	Effective area	Temperature	CV	Power consumpti	Position	Port	operating	voltage
4V110-M5	M5	10mm ²	-5~50 °C	0.56	3VA	2	5	0~9/kgf/cm ²	DC 12V DC 24V AC 24V AC 110V AC 220V
4V110-06	PT1/8	12mm ²	-5~50 °C	0.67	3VA	2	5		
4V210-06	PT1/8	14mm ²	-5~50 °C	0.78	3VA	2	5		
4V210-08	PT1/4	16mm ²	-5~50 °C	0.89	3VA	2	5		
4V310-08	PT1/4	25mm ²	-5~50 °C	1.40	3VA	2	5		
4V310-10	PT3/8	30mm ²	-5~50 °C	1.68	3VA	2	5		
4V410-10	PT3/8	25mm ²	-5~50 °C	1.40	3VA	2	5		
4V410-15	PT1/2	25mm ²	-5~50 °C	1.40	3VA	2	5		
4V120-06	PT1/8	12mm ²	-5~50 °C	0.67	3VA	2	5		
4V220-06	PT1/8	14mm ²	-5~50 °C	0.78	3VA	2	5		
4V220-08	PT1/4	16mm ²	-5~50 °C	0.89	3VA	2	5		
4V320-10	PT3/8	30mm ²	-5~50 °C	1.68	3VA	2	5		
4V420-15	PT1/2	25mm ²	-5~50 °C	1.40	3VA	2	5		
4V130C-06	PT1/8	9mm ²	-5~50 °C	0.50	3VA	3	5		
4V230C-06	PT1/8	12mm ²	-5~50 °C	0.67	3VA	3	5		
4V230C-08	PT1/4	12mm ²	-5~50 °C	0.67	3VA	3	5		
4V330C-08	PT1/4	7mm ²	-5~50 °C	0.67	3VA	3	5		
4V330C-10	PT3/8	18mm ²	-5~50 °C	1.00	3VA	3	5		
4V430C-15	PT1/2	30mm ²	-5~50 °C	1.68	3VA	3	5		
4V130E-06	PT1/8	9mm ²	-5~50 °C	0.50	3VA	3	5		
4V230E-08	PT1/4	12mm ²	-5~50 °C	0.67	3VA	3	5		
4V330E-10	PT3/8	18mm ²	-5~50 °C	1.00	3VA	3	5		
4V430E-15	PT1/2	30mm ²	-5~50 °C	1.68	3VA	3	5		

AIR CONTROL VALVE 4A SERIES : 2 (3) POSITION 5 PORTS



Type	Port size	Effective area	Temperature	CV	Exhaust port size	Position	Port	operating pressure
4A110-06	PT1/8	12 mm ²	-5~55 °C	0.67	PT1/8	2	5	0~9/kgf/cm ²
4A210-08	PT1/4	16 mm ²	-5~55 °C	0.89	PT1/8	2	5	
4A310-10	PT3/8	30 mm ²	-5~55 °C	1.68	PT1/4	2	5	
4A410-15	PT1/2	25 mm ²	-5~55 °C	1.40	PT1/2	2	5	
4A120-06	PT1/8	12 mm ²	-5~55 °C	0.67	PT1/8	2	5	
4A220-08	PT1/4	16 mm ²	-5~55 °C	0.89	PT1/8	2	5	
4A320-10	PT3/8	30 mm ²	-5~55 °C	1.68	PT1/4	2	5	
4A420-15	PT1/2	25 mm ²	-5~55 °C	1.40	PT1/2	2	5	
4A130C-06	PT1/8	9 mm ²	-5~55 °C	0.5	PT1/8	3	5	
4A230C-08	PT1/4	12 mm ²	-5~55 °C	0.67	PT1/8	3	5	
4A330C-10	PT3/8	18 mm ²	-5~55 °C	1.00	PT1/4	3	5	
4A430C-15	PT1/2	30 mm ²	-5~55 °C	1.68	PT1/2	3	5	
4A130E-06	PT1/8	9 mm ²	-5~55 °C	0.50	PT1/8	3	5	
4A230E-08	PT1/4	12 mm ²	-5~55 °C	0.67	PT1/8	3	5	
4A330E-10	PT3/8	18 mm ²	-5~55 °C	1.00	PT1/4	3	5	
4A430E-15	PT1/2	30 mm ²	-5~55 °C	1.68	PT1/2	3	5	

MANIFOLD 4V,4A SERIES



Type	Model	Port size	Stations	Temperature
100M-□ F	4V1 □□ - □□	PT1/4	1F-13F	-5~55°C
200M-□ F	4V2 □□ - □□	PT1/4	1F-16F	-5~55°C
300M-□ F	4V3 □□ - □□	PT3/8	1F-12F	-5~55°C
400M-□ F	4V4 □□ - □□	PT1/2	1F-7F	-5~55°C

SOLENOID VALVE 3V SERIES : 2 POSITION 3 PORTS



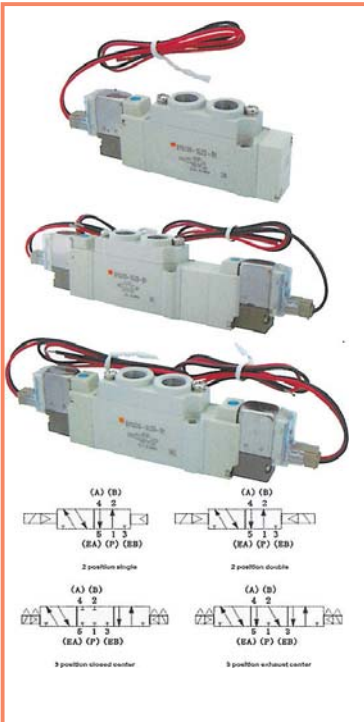
Type	Port size	Effective area	Temperature	CV	Power consumption	Position	Port	operating pressure	voltage
3V110-06	PT1/8	10mm ²	-5~55°C	0.56	3VA	2	3	0~9/kgf/cm ²	DC12V DC24V DC48V AC24V AC36V AC110V AC220V
3V210-08	PT1/4	14mm ²	-5~55°C	0.78	3VA	2	3		
3V310-10	PT3/8	25mm ²	-5~55°C	1.40	3VA	2	3		
3V410-15	PT1/2	50mm ²	-5~55°C	2.80	3VA	2	3		
3V120-06	PT1/8	10mm ²	-5~55°C	0.56	3VA	2	3		
3V220-08	PT1/4	14mm ²	-5~55°C	0.78	3VA	2	3		
3V320-10	PT3/8	25mm ²	-5~55°C	1.40	3VA	2	3		
3V420-15	PT1/2	50mm ²	-5~55°C	2.8	3VA	2	3		

AIR CONTROL VALVE 3A SERIES : 2 POSITION 3 PORTS



Type	Port size	Effective area	Temperature	CV	Exhaust port size	Position	Port	operating pressure
3A110-06	PT1/8	10mm ²	-5~55°C	0.56	PT1/8	2	2	0~9/kgf/cm ²
3A210-08	PT1/4	14mm ²	-5~55°C	0.78	PT1/8	2	2	
3A310-10	PT3/8	25mm ²	-5~55°C	1.40	PT1/4	2	2	
3A410-15	PT1/2	50mm ²	-5~55°C	2.80	PT1/2	2	2	
3A120-06	PT1/8	10mm ²	-5~55°C	0.56	PT1/8	2	3	
3A220-08	PT1/4	14mm ²	-5~55°C	0.78	PT1/8	2	3	
3A320-10	PT3/8	25mm ²	-5~55°C	1.40	PT1/4	2	3	
3A420-15	PT1/2	50mm ²	-5~55°C	2.8	PT1/2	2	3	

SOLENOID VALVE SY SERIES



Type	Port size	Effective area	Temperature	CV	Power consumption	Position&coil	operating pressure	voltage
SY3120-M5	M5	0.61dm ³ /s.bar	-5~55°C	0.16	2.5VA	5/2 way Internally piloted acting type Single electrical control	0~9/kgf/cm ²	1:AC110V 2:AC200V 3:AC110V 4:AC220V 5:DC24V V:DC6V S:DC5V R:DC3V
SY5120-01	PT1/8	1.90dm ³ /s.bar	-5~55°C	0.49	2.5VA			
SY7120-02	PT1/4	4.10dm ³ /s.bar	-5~55°C	0.93	2.5VA			
SY9120-02	PT1/4	7.0dm ³ /s.bar	-5~55°C	1.70	2.5VA			
SY9120-03	PT3/8	8.0dm ³ /s.bar	-5~55°C	1.90	2.5VA	5/2 way Internally piloted acting type Double electrical control		
SY3220-M5	M5	0.61dm ³ /s.bar	-5~55°C	0.16	2.5VA			
SY5220-01	PT1/8	1.90dm ³ /s.bar	-5~55°C	0.49	2.5VA			
SY7220-02	PT1/4	4.10dm ³ /s.bar	-5~55°C	0.93	2.5VA			
SY9220-02	PT1/4	7.0dm ³ /s.bar	-5~55°C	1.70	2.5VA	5/3 way Internally piloted Double electrical control midst closed type		
SY9220-03	PT3/8	8.0dm ³ /s.bar	-5~55°C	19.0	2.5VA			
SY3320-M5	M5	0.48dm ³ /s.bar	-5~55°C	0.13	2.5VA			
SY5320-01	PT1/8	1.70dm ³ /s.bar	-5~55°C	0.45	2.5VA			
SY7320-02	PT1/4	2.90dm ³ /s.bar	-5~55°C	0.70	2.5VA	5/3 way Internally piloted acting type Double electrical control midst exhaust type		
SY9320-02	PT1/4	6.7dm ³ /s.bar	-5~55°C	1.70	2.5VA			
SY9320-03	PT3/8	7.9dm ³ /s.bar	-5~55°C	1.90	2.5VA			
SY3420-M5	M5	0.47dm ³ /s.bar	-5~55°C	0.13	2.5VA			
SY5420-01	PT1/8	1.5dm ³ /s.bar	-5~55°C	0.44	2.5VA	5/3 way Internally piloted acting type Double electrical control midst pressure type		
SY7420-02	PT1/4	2.5dm ³ /s.bar	-5~55°C	0.65	2.5VA			
SY9420-02	PT1/4	6.4dm ³ /s.bar	-5~55°C	1.60	2.5VA			
SY9420-03	PT3/8	8.0dm ³ /s.bar	-5~55°C	1.90	2.5VA			
SY3520-M5	M5	0.50dm ³ /s.bar	-5~55°C	0.15	2.5VA	5/3 way Internally piloted acting type Double electrical control midst pressure type		
SY5520-01	PT1/8	1.20dm ³ /s.bar	-5~55°C	0.61	2.5VA			
SY7520-02	PT1/4	4.30dm ³ /s.bar	-5~55°C	0.97	2.5VA			
SY9520-02	PT1/4	8.0dm ³ /s.bar	-5~55°C	1.80	2.5VA			
SY9520-03	PT3/8	8.90dm ³ /s.bar	-5~55°C	2.20	2.5VA			

SOLENOID VALVE 2W SERIES(NC)



Type	Port size	Effective area	Temperature	CV value	Power consumption	Operating pressure	Voltage
2W025-06	PT1/8	2.5mm	-5~85°C	0.23	15VA	0~9/kgf/cm ²	DC12V DC24V AC24V AC110V AC220V
2W025-06	PT1/4	2.5mm	-5~85°C	0.23	15VA		
2W040-10	PT3/8	4.0mm	-5~85°C	0.6	22VA		
2W160-15	PT1/2	16mm	-5~85°C	4.8	22VA		
2W200-20	PT3/4	20mm	-5~85°C	7.6	22VA	Operation	
2W250-25	PT1	25mm	-5~85°C	12	22VA		
2W350-35	PT1-1/4	35mm	-5~85°C	24	22VA	2/2 way Normally closed	
2W400-40	PT1-1/2	40mm	-5~85°C	29	22VA		
2W500-50	PT2	50mm	-5~85°C	48	22VA		

UNI-D STAINLESS STEEL SOLENOID VALVE



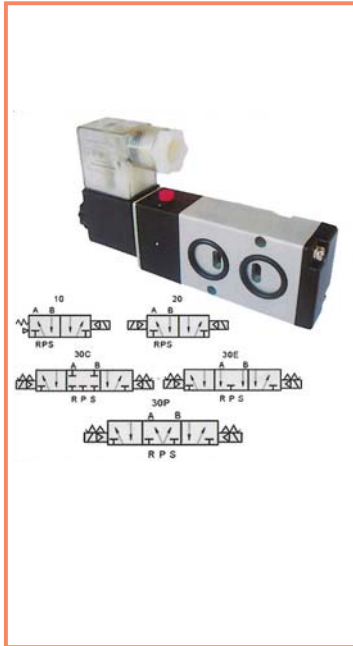
Type	Port size	Effective area	Temperature	CV value	Power consumption	Operation	Operating pressure	Voltage	Operating Voltage Range	Min. Activating Time
UF-06	PT1/8	2.5mm	-5~85°C	0.23	15VA	2/2 way Normally closed	0~9/kgf/cm ²	DC12V DC24V AC24V AC110V AC220V	±15%	0.05S
UF-08	PT1/4	2.5mm	-5~85°C	0.23	15VA					
UF-10	PT3/8	4.0mm	-5~85°C	0.6	22VA					
UWS-15	PT1/2	16mm	-5~85°C	4.8	22VA					
UWS-20	PT3/4	20mm	-5~85°C	7.6	22VA					
UWS-25	PT1	25mm	-5~85°C	12	22VA					
UWS-35	PT1-1/4	35mm	-5~85°C	24	22VA					
UWS-40	PT1-1/2	40mm	-5~85°C	29	22VA					
UWS-50	PT2	50mm	-5~85°C	48	22VA					

UNI-D SOLENOID VALVE



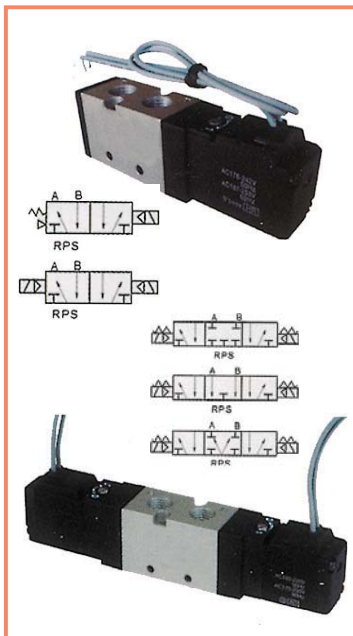
Type	Port size	Effective area	CV value	Power consumption	Operating pressure	Voltage		Temperature	Applicable Temperature	Pressure Range	Operating Voltage Range	Min. Activating Time
						Voltage	Power					
UD-06	PT1/8	2.5mm	0.23	15VA	0~9/kgf/cm ²	DC12V	11W	-5~99°C	Air, Water, Oil (50CS T bellow), Steam	0~1MPa	±10%	0.05S
UD-08	PT1/4	2.5mm	0.23	15VA								
UD-10	PT3/8	4.0mm	0.6	22VA								
UW-15	PT1/2	16mm	4.8	22VA	Operation	AC24V	8W	-5~99°C	Air, Water, Oil (50CS T bellow), Steam	0~1MPa	±10%	0.05S
UW-20	PT3/4	20mm	7.6	22VA								
UW-25	PT1	25mm	12	22VA	2/2 way Normally closed	AC110V AC220V	11W	-5~99°C	Air, Water, Oil (50CS T bellow), Steam	0~1MPa	±10%	0.05S
UW-35	PT1-1/4	35mm	24	22VA								
UW-40	PT1-1/2	40mm	29	22VA								
UW-50	PT2	50mm	48	22VA								

SOLENOID VALVE 4M SERIES



Type	Port size	Effective area	Temperature	CV value	Power consumption	Position&coil	Operating pressure	Voltage
4M110-06	PT1/8	12mm ²	-5~55°C	0.56	3VA	5/2 way internally piloted acting type	0~9/kgf/cm ²	DC12V DC24V DC48V AC24V AC36V AC110 V AC220 V
4M210-08	PT1/4	16mm ²	-5~55°C	0.78	3VA			
4M310-10	PT3/8	30mm ²	-5~55°C	1.4	3VA			
4M410-15	PT1/2	50mm ²	-5~55°C	2.8	3VA	Single electrical control		
4M120-06	PT1/8	10mm ²	-5~55°C	0.56	3VA	5/2 way internally piloted acting type		
4M220-08	PT1/4	14mm ²	-5~55°C	0.78	3VA			
4M320-10	PT3/8	25mm ²	-5~55°C	1.4	3VA			
4M420-15	PT1/2	50mm ²	-5~55°C	2.8	3VA	Double electrical control		
4M130-06C	PT1/8	7mm ²	-5~55°C	0.67	3VA	5/3 way internally piloted acting type		
4M230-08C	PT1/4	12mm ²	-5~55°C	0.78	3VA			
4M330-10C	PT3/8	18mm ²	-5~55°C	1.68	3VA	Double electrical control midst closed type		
4M430-15C	PT1/2	30mm ²	-5~55°C	1.68	3VA			

SOLENOID VALVE VF SERIES



Type	Port size	Effective area	Temperature	CV value	Power consumption	Position&coil	Operating pressure	Voltage
VF3130-02	PT1/4	24mm ²	-5~55°C	6.4	3VA	5/2 way Single electrical control	0~9/kgf/cm ²	DC12V DC24V DC36V AC36V AC110 V AC220 V AC380 V
VF5120-03	PT3/8	49mm ²	-5~55°C	11	3VA			
VF3230-02	PT1/4	24mm ²	-5~55°C	6.4	3VA	5/2 way Single electrical control		
VF5220-03	PT3/8	49mm ²	-5~55°C	11	3VA			
VF3330-02	PT1/4	18mm ²	-5~55°C	4.7	3VA	5/3 way Double electrical control midst closed type		
VF5320-03	PT3/8	30mm ²	-5~55°C	7.3	3VA			
VF3430-02	PT1/4	18mm ²	-5~55°C	3.7	3VA	5/3 way Double electrical control midst pressure type		
VF5420-03	PT3/8	26mm ²	-5~55°C	4.9	3VA			
VF3530-02	PT1/4	18mm ²	-5~55°C	4.8	3VA	5/3 way Double electrical control midst exhaust type		
VF5520-03	PT3/8	26mm ²	-5~55°C	6.6	3VA			

SOLENOID VALVE 2V025/3V1 SERIES



Type	Port size	Effective area	Temperature	CV value	Power consumption	Position&coil	Operating pressure	Voltage
2V025-06	PT1/8	1.2mm ²	-5~55°C	0.23	3VA	2/2 way Normally closed	0~9/kgf/cm ²	DC12V DC24V DC48V AC36V AC110V AC220V
2V025-08	PT1/4	1.2mm ²	-5~55°C	0.23	3VA			
3V1-06	PT1/8	2.5mm ²	-5~55°C	0.23	3VA	3/2 way Single electrical control		
3V1-08	PT1/4	2.5mm ²	-5~55°C	0.23	3VA			

AIR CONTROL VALVE SYA SERIES



Type	Port size	Effective area	Temperature	CV value	Exhaust port size	Position&coil	Operating pressure	Voltage
SYA3120-M5	M5	0.61 dm ³ /s.bar	-5~55°C	0.16	M5	5/2 way Single air control	0~9/kgf/cm ²	
SYA5120-01	PT1/8	1.90 dm ³ /s.bar	-5~55°C	0.49	PT1/8			
SYA7120-02	PT1/4	4.10 dm ³ /s.bar	-5~55°C	0.93	PT1/8	5/2 way Double air control		
SYA3220-M5	M5	0.61 dm ³ /s.bar	-5~55°C	0.16	M5			
SYA5220-01	PT1/8	1.90 dm ³ /s.bar	-5~55°C	0.49	PT1/8	5/3 way Double air control midst closed type		
SYA7220-02	PT1/4	4.10 dm ³ /s.bar	-5~55°C	0.93	PT1/8			
SYA3320-M5	M5	0.48 dm ³ /s.bar	-5~55°C	0.13	M5	5/3 way Double air control midst exhaust type		
SYA5320-01	PT1/8	1.70 dm ³ /s.bar	-5~55°C	0.45	PT1/8			
SYA7320-02	PT1/4	2.90 dm ³ /s.bar	-5~55°C	0.7	PT1/8	5/3 way Double air control midst pressure type		
SYA3420-M5	M5	0.47 dm ³ /s.bar	-5~55°C	0.13	M5			
SYA5420-01	PT1/8	1.5 dm ³ /s.bar	-5~55°C	0.44	PT1/8			
SYA7420-02	PT1/4	2.5 dm ³ /s.bar	-5~55°C	0.65	PT1/8			
SYA3520-M5	M5	0.5 dm ³ /s.bar	-5~55°C	0.15	M5			
SYA5520-01	PT1/8	1.2 dm ³ /s.bar	-5~55°C	0.61	PT1/8			
SYA7520-02	PT1/4	4.3 dm ³ /s.bar	-5~55°C	0.97	PT1/8			

AIR CONTROL VALVE VFA SERIES



Type	Port size	Effective area	Temperature	CV value	Power consumption	Position&coil	Operating pressure	Voltage
VFA3130-02	PT1/4	24mm ²	-5~55°C	6.4	3VA	5/2 way Single electrical control	0~9/kgf/cm ²	
VFA5120-03	PT3/8	49mm ²	-5~55°C	11	3VA			
VFA3230-02	PT1/4	24mm ²	-5~55°C	6.4	3VA	5/2 way Single electrical control		
VFA5220-03	PT3/8	49mm ²	-5~55°C	11	3VA			
VFA3330-02	PT1/4	18mm ²	-5~55°C	4.7	3VA	5/3 way Double air control midst closed type		
VFA5320-03	PT3/8	30mm ²	-5~55°C	7.3	3VA			
VFA3430-02	PT1/4	18mm ²	-5~55°C	3.7	3VA	5/3 way Double air control midst pressure closed type		
VFA5420-03	PT3/8	26mm ²	-5~55°C	4.9	3VA			
VFA5420-02	PT1/4	18mm ²	-5~55°C	4.8	3VA	5/3 way Double air control midst exhaust type		
VFA5520-03	PT3/8	26mm ²	-5~55°C	6.6	3VA			

KNOB SWITCH VALVE



Type	Port size	Effective area	Temperature	CV value	Control type	Valve type	Operating pressure
SHL-01	M5	16mm ²	-5~55°C	0.89	Hand-operated return back	3/2 way Normally closed type	0~10/kgf/cm ²
HL-2301	PT1/8	16mm ²	-5~55°C	0.89	Hand-operated return back	3/2 way Normally closed type	0~10/kgf/cm ²
HL-2501	PT1/8	16mm ²	-5~55°C	0.89	Hand-operated return back	5/2 way	

HAND DRAW VALVE 3R/4R SERIES



Type	Port size	Effective area	Temperature	CV value	Control type	Valve type	Operating pressure
3R210-08	PT1/4	16mm ²	-5~55°C	0.89	Hand return	3/2 way Normally closed	0~10/kgf/cm ²
3R310-10	PT3/8	25mm ²	-5~55°C	1.4			
3R410-15	PT1/2	30mm ²	-5~55°C	1.68			
4R210-08	PT1/4	16mm ²	-5~55°C	0.89	Hand return	5/2 way	
4R310-10	PT3/8	25mm ²	-5~55°C	1.4			
4R410-15	PT1/2	30mm ²	-5~55°C	1.68			
4R230-08C	PT1/4	16mm ²	-5~55°C	0.89	Self return	5/3 way midst closed type	
4R330-10C	PT3/8	25mm ²	-5~55°C	1.4			
4R430-15C	PT1/2	30mm ²	-5~55°C	1.68			

HAND DRAW VALVE SR SERIES



Type	Port size	Effective area	Temperature	CV value	Control type	Valve type	Operating pressure
SR-08	PT1/4	16mm ²	-5~55°C	0.89	Hand return	3/2 way Normally closed	0~10/kgf/cm ²
SR210-08	PT1/4	16mm ²	-5~55°C	0.89	Hand return	5/2 way	

HAND DRAW VALVE JM SERIES



Type	Port size	Effective area	Temperature	CV value	Control type	Valve type	Operating pressure
JM-08	PT1/4	24mm ²	-5~55°C	1.2	Hand return	5/2 way	0~10/kgf/cm ²
JM-09	PT3/8	24mm ²	-5~55°C	1.2			
JM-08A	PT1/4	24mm ²	-5~55°C	1.2	Self return		
JM-09A	PT3/8	24mm ²	-5~55°C	1.2			

HAND DRAW VALVE SH SERIES



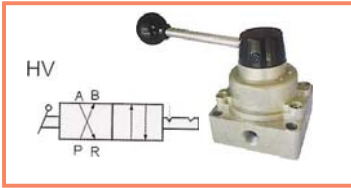
Type	Port size	Effective area	Temperature	CV value	Control type	Valve type	Operating pressure
SH-402	PT1/4	24mm ²	-5~55°C	1.2	Hand return	5/2 way	0~10/kgf/cm ²
SH-403	PT3/8	24mm ²	-5~55°C	1.2			
SH-402A	PT1/4	24mm ²	-5~55°C	1.2	Self return		
SH-403A	PT3/8	24mm ²	-5~55°C	1.2			

MANIFOLD SY/VF SERIES



Type	Model	Port size	Stations	Temperature
SS5Y3-20-□F	SY3□20-M5	PT1/8	1-20	-5~55°C
SS5Y5-20-□F	SY5□20-01	PT1/4	1-20	-5~55°C
SS5Y7-20-□F	SY7□20-02	PT1/4	1-20	-5~55°C
VF3-□F	VF3-□F	PT1/4	1-20	-5~55°C
VF5-□F	VF5-□F	PT1/4	1-20	-5~55°C

HAND VALVE HV SERIES



Type	Port size	Effective area	Temperature	CV value	Valve type	operating pressure
HV-02	PT1/4	16mm ²	-5~55°C	0.89	4/3 way midst closed type	0~10/kgf/cm ²
HV-03	PT3/8	16mm ²	-5~55°C	0.89		
HV-04	PT1/2	16mm ²	-5~55°C	0.89		

HAND VALVE 4HV SERIES



Type	Port size	Effective area	Temperature	CV value	Control type	Valve type	Operating pressure
4HV210-06	PT1/8	14mm ²	-5~55°C	0.78	Hand return	4/2 way	0~10/kgf/cm ²
4HV210-08	PT1/4	16mm ²	-5~55°C	0.89			
4HV310-08	PT1/4	30mm ²	-5~55°C	1.67			
4HV310-10	PT3/8	33mm ²	-5~55°C	1.83			
4HV410-15	PT1/2	88mm ²	-5~55°C	4.89			
4HV410-20	PT3/4	95mm ²	-5~55°C	5.27			
4HV230-06	PT1/8	14mm ²	-5~55°C	0.78		4/3 way midst closed type	
4HV230-08	PT1/4	16mm ²	-5~55°C	0.89			
4HV330-08	PT1/4	30mm ²	-5~55°C	1.67			
4HV330-10	PT3/8	33mm ²	-5~55°C	1.83			
4HV430-15	PT1/2	88mm ²	-5~55°C	4.89			
4HV430-20	PT3/4	95mm ²	-5~55°C	5.27			

CHECK VALVE CV SERIES



Type	Port size	Effective area	Temperature	Fluid	Material	Pressure rang	MIN. Operating Pressure
CV-01	PT1/8	6mm	-5~55°C	Air	Brass	0~12/kgf/cm ²	0.5kgf/cm ²
CV-02	PT1/4	8mm	-5~55°C				
CV-03	PT3/8	10mm	-5~55°C				
CV-04	PT1/2	15mm	-5~55°C				

CHECK VALVE LCV SERIES



Type	Port size	Effective area	Temperature	Fluid	Material	Pressure rang	MIN. Operating Pressure
LCV-06	PT1/8	6mm	-5~55°C	Air	Aluminum alloy	0~12/kgf/cm ²	0.5kgf/cm ²
LCV-08	PT1/4	8mm	-5~55°C				
LCV-10	PT3/8	10mm	-5~55°C				
LCV-15	PT1/2	15mm	-5~55°C				
LCV-20	PT3/4	20mm	-5~55°C				
LCV-25	PT1	25mm	-5~55°C				

SPEED CONTROL VALVE ASC SERIESV



Type	Port size	Effective area	Temperature	Fluid	Material	Pressure rang	MIN.Operating Pressure
ASC-06	PT1/8	3.8mm	-5~55°C	Air	Aluminum alloy	0~10.2/kgf/cm2	1.5~8kgf/cm2
ASC-08	PT1/4	6.0mm	-5~55°C				
ASC-10	PT3/8	32mm	-5~55°C				
ASC-15	PT1/2	32.8mm	-5~55°C				

SPEED CONTROL VALVE RE SERIESV



Type	Port size	Effective area	Temperature	Fluid	Material	Pressure rang	MIN.Operating Pressure
RE-01	PT1/8	3.8mm	-5~55°C	Air	Aluminum alloy	0~10.2/kgf/cm2	1.5~8kgf/cm2
RE-02	PT1/4	6.0mm	-5~55°C				
RE-03	PT3/8	32mm	-5~55°C				
RE-04	PT1/2	32.8mm	-5~55°C				

SPEED CONTROL VALVE AS SERIES



Type	Port size	Effective area	Temperature	Fluid	Material	Pressure rang	MIN.Operating Pressure
AS2000-02	PT1/4	6.0mm	-5~55°C	Air	Aluminum alloy	0~10.2/kgf/cm2	1.5~8kgf/cm2
AS3000-03	PT3/8	32mm	-5~55°C				
AS4000-04	PT1/2	32.8mm	-5~55°C				

CHECK VALVE KV SERIES

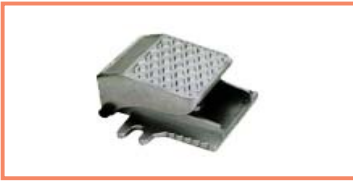


Type	Port size	Effective area	Temperature	Fluid	Material	Pressure rang	MIN.Operating Pressure
KV-06	PT1/8	10mm	-5~55°C	Air	Aluminum alloy	0~12/kgf/cm2	0.5kgf/cm2
KV-08	PT1/4	10mm	-5~55°C				
KV-10	PT3/8	21mm	-5~55°C				
KV-15	PT1/2	21mm	-5~55°C				
KV-20	PT3/4	47mm	-5~55°C				
KV-25	PT1	47mm	-5~55°C				

RESIDUAL PRESSURE EXHAUST VALVE MS SERIES



Type	Port size	Temperature	Port Type	Fluid	Material	Valve type	Pressure rang
MS-11MM	PT1/8	-5~55°C	MM	Air	Aluminum alloy	5/2 way	0~12/kgf/cm2
MS-22MM	PT1/4	-5~55°C					
MS-33MM	PT3/8	-5~55°C					
MS-44MM	PT1/2	-5~55°C					
MS-11MF	PT1/8	-5~55°C	MF				
MS-22MF	PT1/4	-5~55°C					
MS-33MF	PT3/8	-5~55°C					
MS-44MF	PT1/2	-5~55°C					
MS-11FF	PT1/8	-5~55°C	FF				
MS-22FF	PT1/4	-5~55°C					
MS-33FF	PT3/8	-5~55°C					
MS-44FF	PT1/2	-5~55°C					



FOOT VALVE FV SERIES

Type	Port size	Effective area	Temperature	CV value	Control type	Valve type	operating pressure
FV-02	PT1/4	16mm ²	-5~55°C	0,89	Hand return	3/2 way Normally closed type	0~10/kgf/cm2



FOOT VALVE 4F SERIES

Type	Port size	Effective area	Temperature	CV value	Control type	Valve type	operating pressure
4F210-08	PT1/4	24mm ²	-5~55°C	1,20	Spring return	5/2 way	0~10/kgf/cm2
4F210-08L	PT1/4	24mm ²	-5~55°C	1,20	Selflock		
4F210-08G	PT1/4	24mm ²	-5~55°C	1,20	Spring return+cover		
4F210-08LG	PT1/4	24mm ²	-5~55°C	1,20	Selflock+cover		

MECHANICAL VALVE MOV SERIES



Type	Port size	Effective area	Temperature	CV value	Valve type	operating pressure
MOV-01	PT1/8	24mm ²	-5~55°C	1,20	3/2 way Normally closed type	0~10/kgf/cm2
MOV-02	PT1/8	24mm ²	-5~55°C	1,20		
MOV-03	PT1/8	24mm ²	-5~55°C	1,20		
MOV-03A	PT1/8	24mm ²	-5~55°C	1,20		

MECHANICAL VALVE JM SERIES



Type	Port size	Effective area	Temperature	CV value	Valve type	operating pressure
JM-05	PT1/4	24mm ²	-5~55°C	1,20	3/2 way Normally closed type	0~10/kgf/cm2
JM-06	PT1/4	24mm ²	-5~55°C	1,20		
JM-06A	PT1/4	24mm ²	-5~55°C	1,20		
JM-07	PT1/4	24mm ²	-5~55°C	1,20		

MECHANICAL VALVE JMJ SERIES



Type	Port size	Effective area	Temperature	CV value	Valve type	operating pressure
MV-08	PT1/4	24mm ²	-5~55°C	1,20	3/2 way Normally closed type	0~10/kgf/cm2
MV-09	PT1/4	24mm ²	-5~55°C	1,20		
MV-10	PT1/4	24mm ²	-5~55°C	1,20		
MV-10A	PT1/4	24mm ²	-5~55°C	1,20		

HAND CONTROL VALVE 3H/4H SERIES



Type	Port size	Effective area	Temperature	CV value	Control type	Valve type	operating pressure
3H210-08	PT1/4	16mm ²	-5~55°C	0,89	Hand return	3/2 way Normally closed	0~10/kgf/cm2
3H310-10	PT3/8	25mm ²	-5~55°C	1,4			
3H410-15	PT1/2	30mm ²	-5~55°C	1,68			
4H210-08	PT1/4	16mm ²	-5~55°C	0,89			
4H310-10	PT3/8	25mm ²	-5~55°C	1,40	Hand return	5/2 way	
4H410-15	PT1/2	30mm ²	-5~55°C	1,68			
4H230-08C	PT1/4	16mm ²	-5~55°C	0,89	Self return	5/3 way midst closed type	
4H330-10C	PT3/8	25mm ²	-5~55°C	1,4			
4H430-15C	PT1/2	30mm ²	-5~55°C	1,68			