

Series DW

2 Port Solenoid Valve



● WIDER RANGE OF OPERATING PRESSURE

0 ~ 7kgf/cm² (TV2W03)

0 ~ 10kgf/cm² (TV2W10,15)

0.3 ~ 10kgf/cm² (TV2W20, 25)

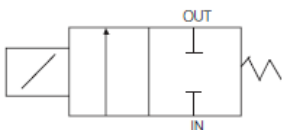
● HIGH FLOW CAPACITY

● LOW VOLTAGE SOLENOID

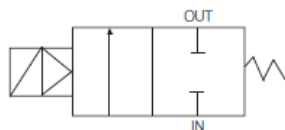
● CAN BE MOUNTED ANYWHERE

Symbol

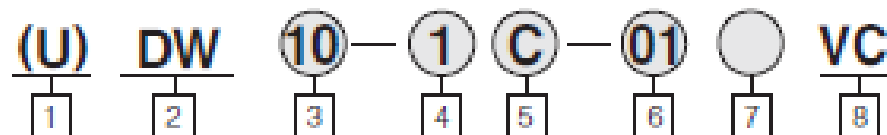
Direct Acting Type
(N.C)



Air Pilot Type
(N.C)



How to Order



1 Series

Blank : Rc(PT)

U : NPT

2 2 Port Solenoid Valve

Applicable Fluid

DW : Water, Air, Oil

DWS : Steam

3 Body(Orifice Size)

03 : φ 2.5—Direct Type Solenoid

10 : φ 10

15 : φ 15

20 : φ 20

25 : φ 25

Pilot Type Solenoid

4 Voltage

1 : AC110V, 60Hz / AC100V, 50/60Hz

2 : AC220V, 60Hz / AC200V, 50/60Hz

5 : DC24V

9 : Others

5 Electrical Entry

G : Grommet (only Rc(PT) 1/8)

C : Connector

6 Port Size Rc(PT)

01 : 1/8

04 : 1/2

02 : 1/4

06 : 3/4

03 : 3/8

10 : 1

7 Material

Blank : Standard

S : SUS Type

8 VC : Vacuum Type(-100kpa)

(AC Voltage)

Standard Specifications

Applicable	Air, Water, Oil, Steam		
Proof Pressure	1.5MPa(213.35psi)		
Fluid Temperature	0~70°C(32°F~158°F)		
Ambient and Fluid Temperature	Max. 60°C(140°F)		
Electrical Entry	Grommet, Connector		
Actuation Type	Direct or Pilot Solenoid		
Valve Type	Normal Close		
Seat Type	Poppet		
Rated Voltage	AC (50/60Hz)	100V, 200V	
	DC	24V	
Allowance Voltage Range	Rated Voltage ±10%		
Coil Insulation	Class B or Equivalent 110°C(230°F)		
Power Consumption	AC	Inrush	17VA (60Hz)
		Holding	15VA (60Hz)
	DC	11W	
Material	Body	BC 6	
	Seal	NBR	

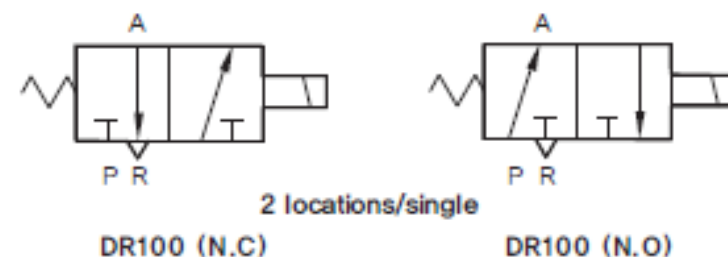
Series DR 100

3-port Miniature Solenoid Valve

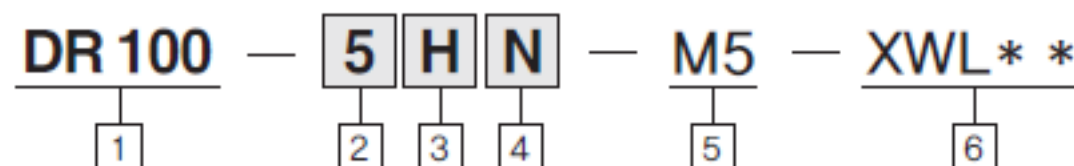


- SUBCOMPACT (100MM WIDE) TYPE VALVE
- SUPERB UTILIZATION CONDITION IN HIGH PRESSURE (MAX' 0.8MPa)
- LARGE FLUX GUARANTEED (SUPPLY/EXHAUST=18/20ℓ /min)
- UPGRADE IMPACT-RESISTANCE VIBRATION-RESISTANCE PERFORMANCE
- VISUAL DISTANCE GUARANTEED BY LED LAMP (LAMP WINDOW LENS EQUIPPED, HIGH BRIGHTNESS LED APPLIED)
- MINIMIZED THERMAL DEFORMATION AND E/PLASTIC WITH EXCELLENT DIMENSION STABILITY APPLIED, FLUORINE SERIES SEALING SYSTEM APPLIED WHICH HAS HIGH PERFORMANCE IN HIGH TEMPERATURE.
- LOW ELECTRIC CONSUMPTION TYPE (OPTION ENERGY CONSERVATION TYPE)

Symbol



How to Order



1 DR100 Series

Subcompact type (10mm wide)
3 port valve
100 : N.C Type
120 : N.O Type

2 Voltage

1 : AC110V
2 : AC220V
5 : DC24V
6 : DC12V
*AC110V, AC220V are only for Vertical type.

3 Electrical Entry (DC, AC)

V : Vertical type connector
H : Horizontal type connector

*Contact for standard and terminal type.

4 PCB Type

Blank : Standard type (Lamp Type)
N : Lead wire excluded
D : Non-polar lamp type
S : Power saving PCB Type
(0.85 → 0.45W)

*Application range of D,S is V and H types of DC only.

5 Option

Blank : Without sub-plate
M5 : With sub-plate (M5×0.8)

6 Length of Lead Wire

Blank : 300mm
XWL01 : 100mm
XWL02 : 200mm
XWL04 : 400mm

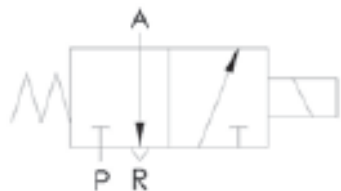
Series **DR 200**

3-Port Small (15mm) Solenoid Valve

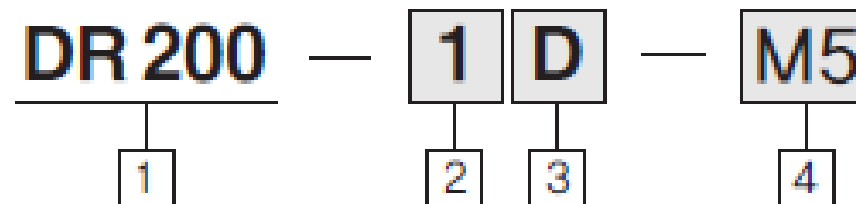


- 15MM WIDE 3-PORT DIRECT MOTION TYPE VALVE
- SUPERB PERFORMANCE IN HIGH PRESSURE CONDITION (MAX' 1.0MPA)
- REALIZATION OF COMPACT SIZE AND LIGHT WEIGHT
- SUPERB PERFORMANCE E/PLASTIC APPLIED FOR CHEMICAL-RESISTANCE

symbol (N.C)



How to Order



1 DR200 Series

Small (15mm wide) 3-port valve

2 Voltage

- 1 : AC 110V
- 2 : AC 220V
- 5 : DC 24V

3 Electrical Entry

- D : DIN type terminal (Lamp non-existed)
- DZ : DIN type terminal (Lamp existed)
- N : Connector non-existed

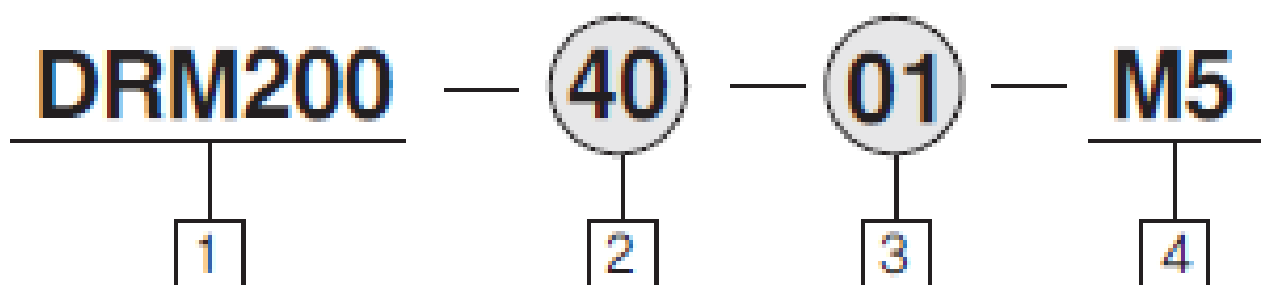
4 Sub Plate Option

- Blank : None
- M5 : Sub-plate attached
(for M5x0.8 pipe port installation)

Series DR200

Manifold

How to Order



1 Manifold for DR200
Valve

Subcompact (15mm wide) valve

2 Piping Method

40 : Base piping type

3 Connection Number

01 : 1connection setting
(in case of single use of
sub-plate)

02 : 2connection setting

03 : 3connection setting

04 : 4connection setting

⋮

12 : 12connection setting

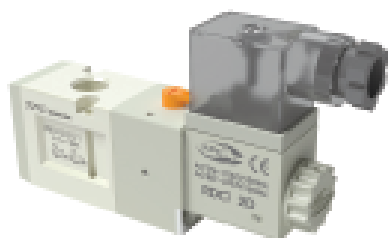
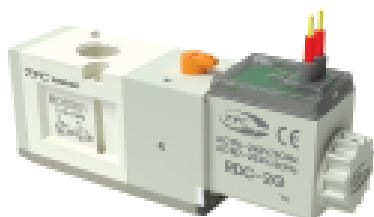
4 Port Screw Classification

M5 : M5 X 0.8

(P, A and R port)

RDS300 Series

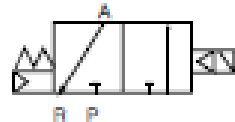
Rubber Seal 3port Pilot type



- Compact size and light weight(26.4mm width)
- Large flow capacity
- Easy modification from N.C to N.O
- Made with environment friendly materials
- White color design
- Easy to replace coil

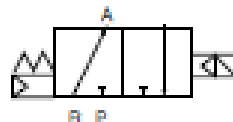
Symbol

RDS301-○○○-
○○A(N.C)



Single

RDS301-○○○-
○○B(N.O)



How to order

① **U** RDS ③ **0** ① — ① **G** — ② **02** ⑦ **A** — **XWL * ***

① RDS300 Series
Blank : Metric Rc(PT)
U : NPT

② Type of actuation
0 : N.C/N.O

③ Port type
1 : Body Ported

④ Coil Voltage
1- AC110V, 50/60HZ
2- AC220V, 50/60HZ
3- AC120V, 50/60HZ
4- AC240V, 50/60HZ
5- DC24V

6- DC12V
8- AC24V, 50/60HZ
9- DC100V

⑤ Electrical Entry
G : Grommet(Lead wire 300mm)
D : DIN Connector
02 : DIN Connector(Lamp + Surge voltage protecting circuit attached)
N : DIN type connector not included

⑥ Port Size
01 : Rc(PT)1/8
02 : Rc(PT)1/4

⑦ Action
A : Normal Close
B : Normal Open

⑧ Length of lead wire
Blank : 300mm
XWL01: 100mm
XWL02: 200mm
:
XWL20: 2000mm

* Integrated push & lock type is standard option for manual operation.

RDC Series



How to order

RDC ① **1** ③ **G** — **XWL * ***

① RDC Series

② Coil Voltage
1: AC110V, 50/60HZ
2: AC220V, 50/60HZ
3: AC120V, 50/60HZ
4: AC240V, 50/60HZ
5: DC24V
6: DC12V

8: AC24V, 50/60HZ
9: DC100V

③ Electrical Entry
G : Grommet(Lead wire 300mm)
D : DIN Connector
02 : DIN Connector(Lamp + Surge voltage protecting circuit attached)
N : DIN type connector not included

④ Length of lead wire
Blank : 300mm
XWL01: 100mm
XWL02: 200mm
:
XWL20: 2000mm

DIN TERMINAL BOX Order form



TVF3130-61-2005 — Additional Symbol

①

RDS3000 Series

Manifold



Types · Specifications

Manifold Type	B Mount(Single Base type)	
EXHAUST Port Type	Common	Single
⁽¹⁾ Maximum valve connection number	20 Stations	

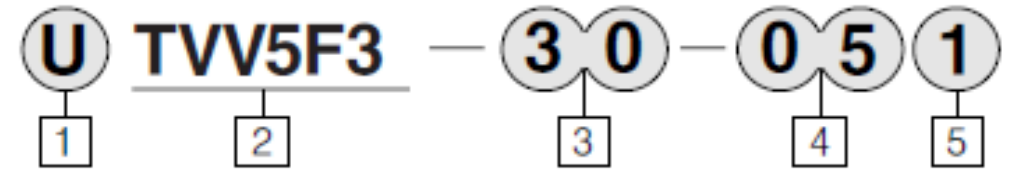
(1) For more than 8 stations of B mounting type, pressurized at both ends of P(SUP) port and exhausted by both R(EXH) ports.

Types · Specifications

Type	Manifold Base type	⁽¹⁾ R(EXH) Type	Piping Direction/Connect Location			PORT SIZE Rc(PT)			Applied Valve Type
			P(SUP)	R(EXH)	A,B(CYL)	P(SUP)	R(EXH)	A,B(CYL)	
B Mount	TW5F3-30	Common	Transverse	Transverse	Upper	1/4	1/4	1/8	RDS3○30
			Base	Base	Valve			1/4	

(1) The type of P port is common.

Manifold Base Order form



1 Manifold
Blank : Metric(PT)
U : NPT

2 RDS3000 Series Manifold

3 Manifold Specification
Symbol : 30
A,B(CYL) port piping position : Valve
Port size : Rc(PT)1/4
Applied Valve : RDS3○30

4 Stations
02 : 2 Stations
?
20 : 20 Stations

5 Component Symbol
Symbol : 1
Passage Specification
P(SUP) : Common
R(EXH) : Common
Piping Specification
A, B(CYL) : Upper(Transverse)
Remark : 30 Type

Blank Plate

TVF3130-83A

(Gasket and bolt included)