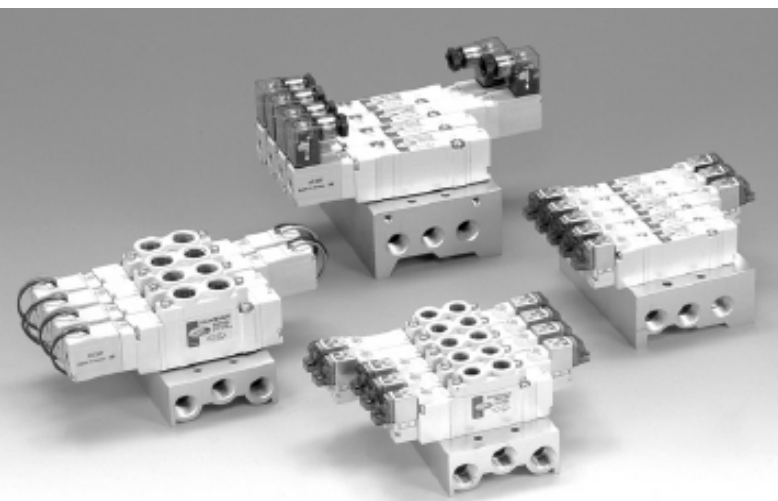


Series DV1000 · 3000 · 4000

5port Pilot Solenoid Valve



● QUICK RESPONSE TIME & LARGE FLOW CAPACITY

- Response time is less than 12ms (DR1000)
- Increase of CV factor(2.5 times larger than conventional valve with the same body width)
- Low power consumption : 0.6W (Current draw : 25mA at 24V DC)

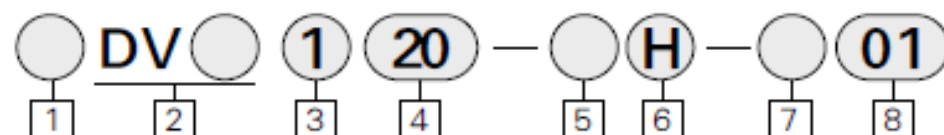
● HIGH RELIABILITY

- Long life
- Wear Ring → To prevent spool abrasion
- U Packing → To minimize frictional resistance
- Piston return type at retraction

● PRODUCT FEATURES

- Easy wiring
- Nickel plated(Copper free) application as standard
- Built-in LED for grommet type as standard

How to order



1 Series

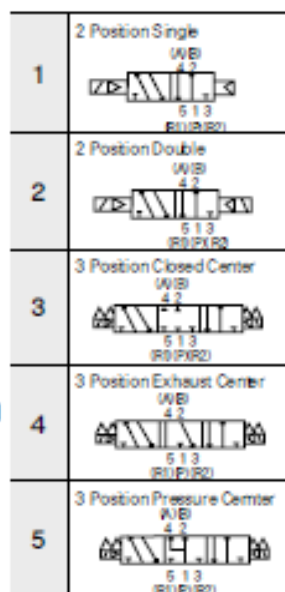
Blank : Rc(PT)
U : NPT

2 DV Valve Series

1 : DV1000 Series
3 : DV3000 Series
4 : DV4000 Series

3 Configuration

1 : Single Solenoid
2 : Double Solenoid
3 : Closed Center
4 : Exhaust Center
5 : Pressure Center



4 Manifold Specifications

20 : Body Ported
40 : Base Mounted

5 Voltage

1 : AC110V
5 : DC24V
6 : DC12V

6 Electrical Entry

H : Horizontal Connector
(Impossible AV Voltage)
V : Vertical Connector
G : Grommet Type(Basic Option Lamp)
D : Din Terminal Type
(Without Lamp)
DZ : Din terminal Type
(With Lamp)-only, 24VDC

* G, D, DZ Types are for only DV3000, DV4000 and DC24V

7 Blank : Rc(PT)

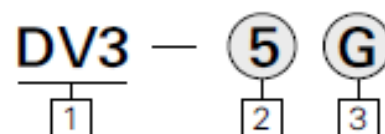
G : Rc(PF)

8 Port Size

Blank : Without Sub Plate
M5 : M5×0.8
(Series DV1000)
10 : 10-32UNF
(Series UDV1000)
01 : Rc(PT) 1/8
(Series DV3000)
02 : Rc(PT) 1/4
(Series DV4000)

※ When using a TPC valve be sure to use the TPC gasket
※ It is standard to attach the LAMP/SURGE voltage protection circuit. (Products without a LAMP or SURGE voltage protection circuit should be contacted separately)

How to order



1 DV Series Pilot Valve Ass'y

2 Voltage

1 : AC110V
2 : AC220V
5 : DC24V
※ AC 110V type, Inquire Separately

3 Electrical Entry

G : Grommet type(With Lamp as Standard)
D : Din Terminal type(Without Lamp)
DZ : Din Terminal type(With Lamp)

DVC1000 Series Promotional Material



DV1000 Compact Type Valve



1. Specification

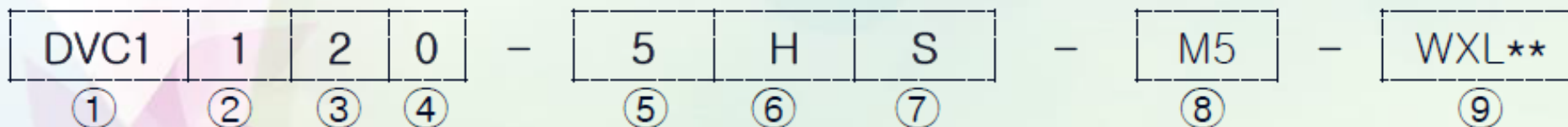
Division		Specification	
Fluid		Air	
Working Pressure (MPa)	SINGLE	0.15~0.7	
	DOUBLE	0.1~0.7	
	3 POSITION	0.2~0.7	
Ambient and Fluid Temperature ℃		0~50 ℃	
Port size (Body Ported Type)		M3 X 0.5	
Manual type		PUSH & LOCK (Standard)	
PILOT Exhaust Type		Individual Exhaust, Common Exhaust	
Lubrication		Non-lube	
Response (ms)	SINGLE	Less than 15	
	DOUBLE	Less than 15	
	3 POSITION	Less than 30	
(Cv)	Division	Body Ported Type	BASE Mounted Type
	SINGLE, DOUBLE	Over 0.06	Over 0.12
	CLOSED CENTER	Over 0.06	Over 0.12
	EXHAUST CENTER	Over 0.06	Over 0.1
	PRESSURE CENTER	Over 0.06	Over 0.16

Note) The effective sectional area is based on switching P to A or B ports.



2.How to order

■ VALVE



① DV1000 COMPACT TYPE VALVE

② Configuration

1	SINGLE
2	DOUBLE
3	CLOSED CENTER
4	EXHAUST CENTER
5	PRESSUER CENTER

③ Body Type

2	Body ported type
4	Base mounted type

④ Exhaust Type

0	Individual Exhaust
3	Common Exhaust for Main and Pilot Valve

⑤ Voltage

1	AC 110V
2	AC 220V
5	DC 24V
6	DC 12V

⑥ Electrical Entry

H	Horizontal Connector
V	Vertical Connector

Note) AC voltage is only available for horizontal connectors

⑦ PCB specifications

Blank	Standard (LAMP TYPE)
D	Non-Polar LAMP TYPE
S	Power Saving PCB TYPE

Note) For D,S type : DC VOLTAGE only

⑧ OPTION

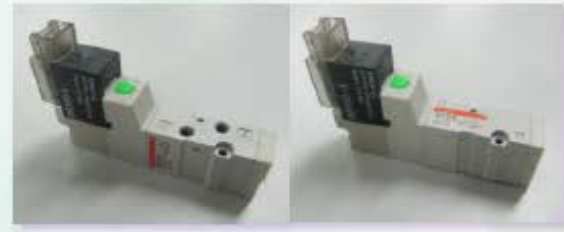
*SUB PLATE & Bracket attached

Blank	Without Sub Plate	
M5	M5 X 0.8 (SUB PLATE)	Base Mounted
B	BRACKET	Body Ported

Note)BRACKET is released in a state of non-assembly.

⑨ Length of Lead Wire

Blank	300 mm
XWL 01	100 mm
02	200 mm
⋮	⋮
20	2,000 mm



2.How to order

MANIFOLD



- ① DVC1000 MANIFOLD
- ② Manifold Specification

20	Body Ported
40	BASE Mounted

- ③ Stations (01~20)



Body Ported Type



BASE Mounted Type

Note1) The minimum stations of body ported are 2 stations.
 Note2) The station 01 of base mounted is Sub Plate.

BRACKET ASS'Y(Body Ported Type) : DVC1000-B2

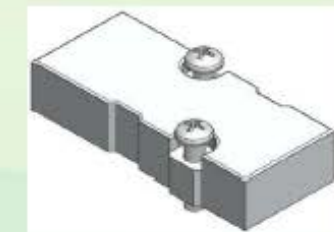


BRACKET ATTACHED



BRACKET

(Including 2PCS of BOLT)



BLANK PLATE

(Including 1PC of GASKET 1EA & 2PCS of BOLT)

BLANK PLATE ASS'Y(Body Ported & BASE Mounted Common) : DVCM1-B

